

Human BCAM Protein, His Tag, low Endotoxin (MALS verified)

Catalog # BCM-H52H3



BIOSYSTEMS
Acro

Synonym

BCAM

Source

Human BCAM Protein, His Tag (BCM-H52H3) is expressed from human 293 cells (HEK293). It contains AA Glu 32 - Ala 547 (Accession # [P50895](#)).

Predicted N-terminus: Glu 32

Molecular Characterization

BCAM(Glu 32 - Ala 547)
P50895

Poly-his

[Other Tags and Version Biotin & Other Labeled Version](#)

This protein carries a polyhistidine tag at the C-terminus.

The protein has a calculated MW of 58.1 kDa. The protein migrates as 80-95 kDa when calibrated against [Star Ribbon Pre-stained Protein Marker](#) under reducing (R) condition (SDS-PAGE) due to glycosylation.

Endotoxin

Less than 0.01 EU per µg by the LAL method / rFC method.

Purity

>95% as determined by SDS-PAGE.

>95% as determined by SEC-MALS.

Formulation

Lyophilized from 0.22 µm filtered solution in PBS, pH7.4 with trehalose as protectant.

Contact us for customized product form or formulation.

Reconstitution

Please see Certificate of Analysis for specific instructions.

For best performance, we strongly recommend you to follow the reconstitution protocol provided in the CoA.

Storage

For long term storage, the product should be stored at lyophilized state at -20°C or lower.

Please avoid repeated freeze-thaw cycles.

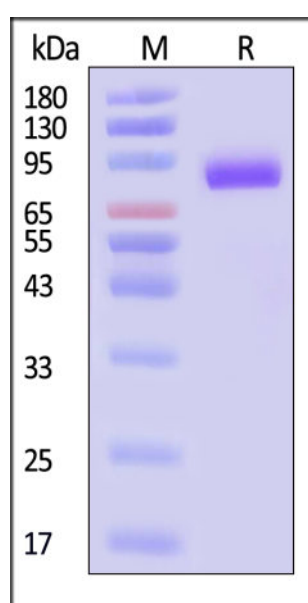
This product is stable after storage at:

- -20°C to -70°C for 12 months in lyophilized state;
- -70°C for 3 months under sterile conditions after reconstitution.

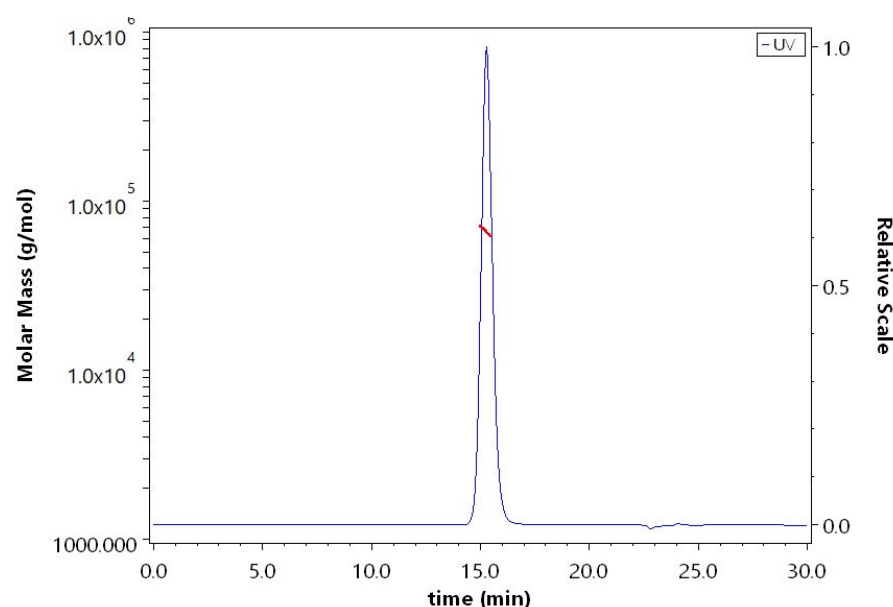
ACRO Quality Management System

- [QMS\(ISO, GMP\)](#)
- [Quality Advantages](#)
- [Quality Control Process](#)

SDS-PAGE



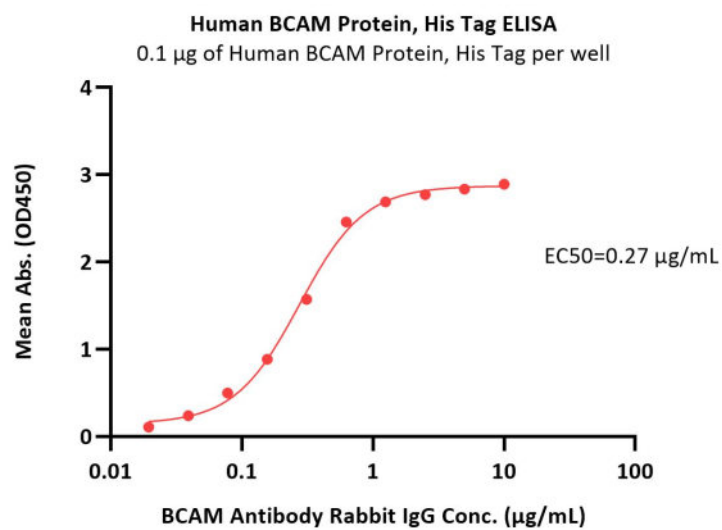
SEC-MALS



Human BCAM Protein, His Tag on SDS-PAGE under reducing (R) condition. The gel was stained with Coomassie Blue. The purity of the protein is greater than 95% (With [Star Ribbon Pre-stained Protein Marker](#)).

The purity of Human BCAM Protein, His Tag (Cat. No. BCM-H52H3) is more than 95% and the molecular weight of this protein is around 60-95 kDa verified by SEC-MALS.

Bioactivity-ELISA



Immobilized Human BCAM Protein, His Tag (Cat. No. BCM-H52H3) at 1 µg/mL (100 µL/well) can bind BCAM Antibody Rabbit IgG with a linear range of 0.02-0.625 µg/mL (QC tested).

Background

Basal Cell Adhesion Molecule (BCAM), also known as the Lutheran blood group glycoprotein, is a transmembrane glycoprotein belonging to the immunoglobulin superfamily (IgSF). Encoded by a gene located on human chromosome 19, BCAM consists of five extracellular immunoglobulin-like (Ig-like) domains, a single transmembrane segment, and a short intracellular tail. Extracellular domain enables binding to extracellular matrix proteins, such as laminin, integrin and other ligands while its intracellular domain interacts with cytoskeletal proteins like hemoglobin, facilitating cell signal transduction. This molecule plays pivotal roles in multiple physiological processes (e.g., cell-matrix interaction, tissue development) and pathological conditions (e.g., tumor metastasis, hematological disorders).

Discounts, Gifts,
and more!



www.acrobiosystems.com

11/17/2025