



Synonyms

CDH6, CAD6, KCAD, K-cadherin, Cadherin-6

Source

Cynomolgus / Rhesus macaque Cadherin-6 Protein, Fc Tag (CA6-C5253) is expressed from human 293 cells (HEK293). It contains AA Thr 22 - Gly 614 (Accession # [G7MUQ7-1](#)). In the region Thr 22 - Gly 614, the amino acid sequences of Cynomolgus and Rhesus macaque Cadherin-6 are identical.

Predicted N-terminus: Thr 22

Molecular Characterization

Cadherin-6(Thr 22 - Gly 614) G7MUQ7-1	Fc(Pro 100 - Lys 330) P01857-1
--	-----------------------------------

This protein carries a human IgG1 Fc tag at the C-terminus.

The protein has a calculated MW of 92.5 kDa. The protein migrates as 110-130 kDa when calibrated against [Star Ribbon Pre-stained Protein Marker](#) under reducing (R) condition (SDS-PAGE) due to glycosylation.

Endotoxin

Less than 1.0 EU per µg by the LAL method / rFC method.

Purity

>90% as determined by SDS-PAGE.

>90% as determined by SEC-MALS.

Formulation

Lyophilized from 0.22 µm filtered solution in PBS, pH7.4 with trehalose as protectant.

Contact us for customized product form or formulation.

Reconstitution

Please see Certificate of Analysis for specific instructions.

For best performance, we strongly recommend you to follow the reconstitution protocol provided in the CoA.

Shipping and Storage

This product is shipped at ambient temperature.

For long term storage, the product should be stored at lyophilized state at -20°C or lower.

Please avoid repeated freeze-thaw cycles.

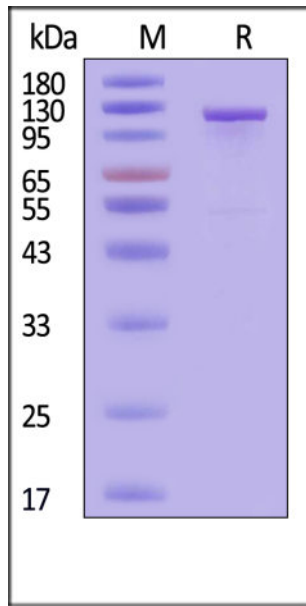
This product is stable after storage at:

- -20°C to -70°C for 12 months in lyophilized state;
- -70°C for 3 months under sterile conditions after reconstitution.

ACRO Quality Management System

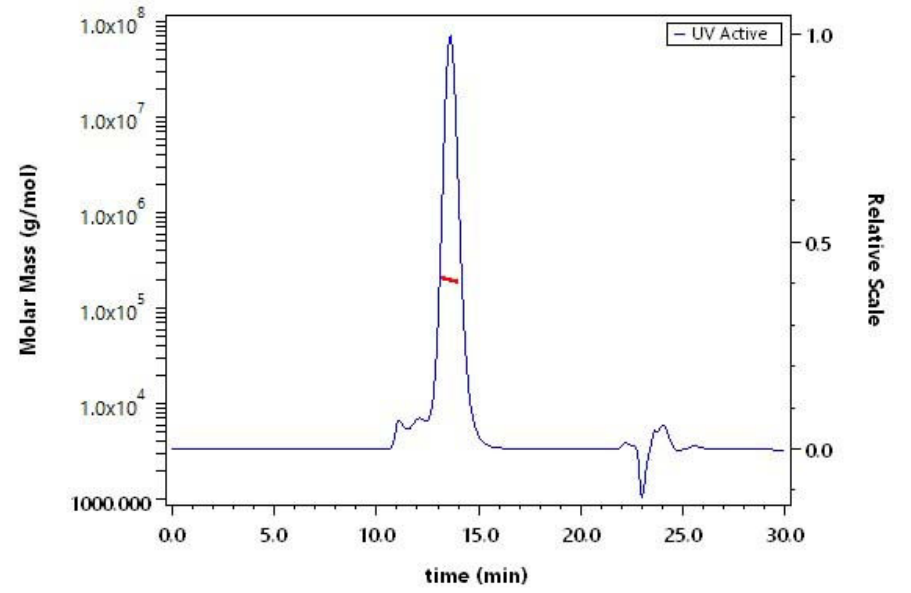
- [QMS\(ISO, GMP\)](#)
- [Quality Advantages](#)
- [Quality Control Process](#)

SDS-PAGE



Cynomolgus / Rhesus macaque Cadherin-6 Protein, Fc Tag on SDS-PAGE under reducing (R) condition. The gel was stained with Coomassie Blue. The purity of the protein is greater than 90% (With [Star Ribbon Pre-stained Protein Marker](#)).

SEC-MALS



The purity of Cynomolgus / Rhesus macaque Cadherin-6 Protein, Fc Tag (Cat. No. CA6-C5253) is more than 90% and the molecular weight of this protein is around 185-220 kDa verified by SEC-MALS.

Background

Cadherin-6 (CDH6) is also known as Kidney cadherin (K-cadherin or KCAD), is a type II classical cadherin from the cadherin superfamily. Cadherins are calcium-dependent cell adhesion proteins. They preferentially interact with themselves in a homophilic manner in connecting cells; cadherins may thus contribute to the sorting of heterogeneous cell types. CDH6 / KCAD contains five cadherin domains. CDH6 is highly expressed in brain, cerebellum, and kidney. Lung, pancreas, and gastric mucosa show a weak expression and also expressed in certain liver and kidney carcinomas.

Discounts, Gifts,
and more!



www.acrobiosystems.com

