

Rhesus macaque Cadherin-17 / CDH17 Protein, His Tag (SPR verified)

Catalog # CA7-R52H4



BIOSYSTEMS
Acro

Surprise Inside!

Synonym

Cadherin-17, CDH17, HPT-1, LI-cadherin

Source

Rhesus macaque Cadherin-17 Protein, His Tag (CA7-R52H4) is expressed from human 293 cells (HEK293). It contains AA Gln 23 - Thr 784 (Accession # [A0A1D5R2B4](#)).

Predicted N-terminus: Gln 23

Molecular Characterization

Cadherin-17(Gln 23 - Thr 784) A0A1D5R2B4	Poly-his
---	----------

This protein carries a polyhistidine tag at the C-terminus.

The protein has a calculated MW of 86.4 kDa. The protein migrates as 90-110 kDa when calibrated against [Star Ribbon Pre-stained Protein Marker](#) under reducing (R) condition (SDS-PAGE) due to glycosylation.

Endotoxin

Less than 1.0 EU per µg by the LAL method / rFC method.

Purity

>90% as determined by SDS-PAGE.

Formulation

Lyophilized from 0.22 µm filtered solution in 20 mM Tris, 150 mM NaCl, pH8.0 with trehalose as protectant.

Contact us for customized product form or formulation.

Reconstitution

Please see Certificate of Analysis for specific instructions.

For best performance, we strongly recommend you to follow the reconstitution protocol provided in the CoA.

Storage

For long term storage, the product should be stored at lyophilized state at -20°C or lower.

Please avoid repeated freeze-thaw cycles.

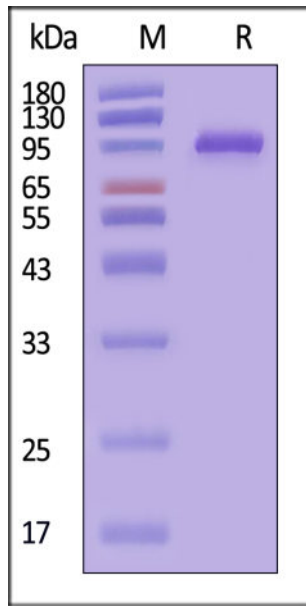
This product is stable after storage at:

- -20°C to -70°C for 12 months in lyophilized state;
- -70°C for 3 months under sterile conditions after reconstitution.

ACRO Quality Management System

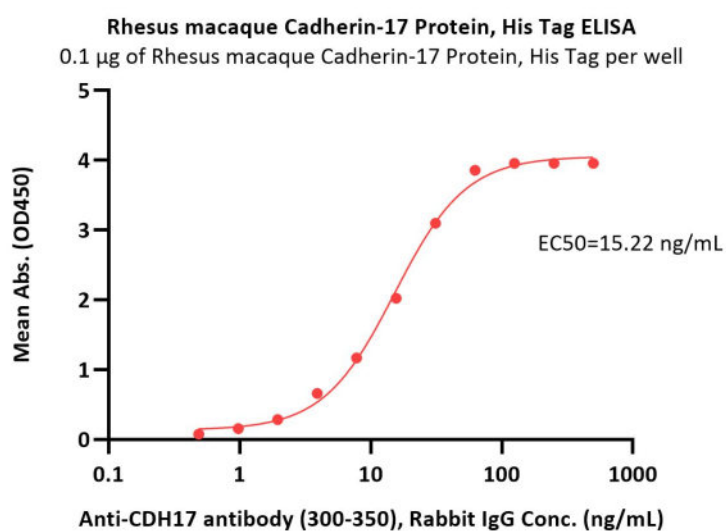
- [QMS\(ISO, GMP\)](#)
- [Quality Advantages](#)
- [Quality Control Process](#)

SDS-PAGE



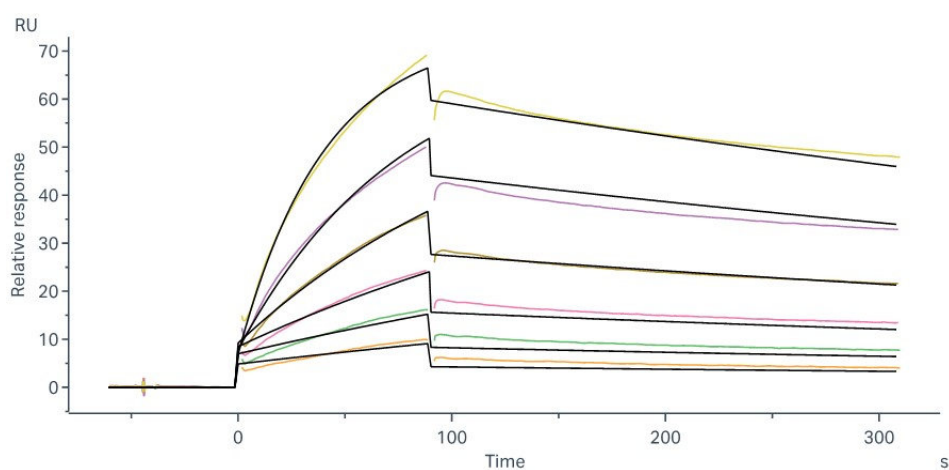
Rhesus macaque Cadherin-17 Protein, His Tag on SDS-PAGE under reducing (R) condition. The gel was stained with Coomassie Blue. The purity of the protein is greater than 90% (With [Star Ribbon Pre-stained Protein Marker](#)).

Bioactivity-ELISA



Immobilized Rhesus macaque Cadherin-17 Protein, His Tag (Cat. No. CA7-R52H4) at 1 µg/mL (100 µL/well) can bind Anti-CDH17 antibody (300-350), Rabbit IgG with a linear range of 0.5-31 ng/mL (QC tested).

Bioactivity-SPR



Anti-CDH17 antibody (300-350), Rabbit IgG captured on Protein A Chip can bind Rhesus macaque Cadherin-17 Protein, His Tag (Cat. No. CA7-R52H4) with an affinity constant of 152 nM as determined in a SPR assay (Biacore 8K) (QC tested).

Background

Cadherin-17, also known as liver-intestine (LI) Cadherin, belongs to the cadherin family of calcium-dependent cell adhesion molecules. In vivo studies showed CDH17 knockout resulted in apoptotic PC tumor death through activating caspase-3 activity. Taken together, CDH17 functions as an oncogenic molecule critical to PC growth by regulating tumor apoptosis signaling pathways and CDH17 could be targeted to develop an anti-PC therapeutic approach.

Discounts, Gifts,
and more!



www.acrobiosystems.com

5/21/2026
