

Rat CCL1 / I-309 Protein, Fc Tag (MALS verified)

Catalog # CC1-R5253



BIOSYSTEMS
Acro

Synonym

CCL1, I-309, C-C motif chemokine 1

Source

Rat CCL1 Protein, Fc Tag (CC1-R5253) is expressed from human 293 cells (HEK293). It contains AA Lys 24 - Cys 92 (Accession # [D3ZDY4](#)).

Predicted N-terminus: Lys 24

Molecular Characterization

| | |
|---------------------------------|-----------------------------------|
| CCL1(Lys 24 - Cys 92) D3ZDY4 | Fc(Pro 100 - Lys 330) P01857-1 |
|---------------------------------|-----------------------------------|

This protein carries a human IgG1 Fc tag at the C-terminus.

The protein has a calculated MW of 34.4 kDa. The protein migrates as 40-45 kDa when calibrated against [Star Ribbon Pre-stained Protein Marker](#) under reducing (R) condition (SDS-PAGE) due to glycosylation.

Endotoxin

Less than 1.0 EU per µg by the LAL method / rFC method.

Purity

>95% as determined by SDS-PAGE.

>95% as determined by SEC-MALS.

Formulation

Lyophilized from 0.22 µm filtered solution in PBS, pH7.4 with trehalose as protectant.

Contact us for customized product form or formulation.

Reconstitution

Please see Certificate of Analysis for specific instructions.

For best performance, we strongly recommend you to follow the reconstitution protocol provided in the CoA.

Storage

For long term storage, the product should be stored at lyophilized state at -20°C or lower.

Please avoid repeated freeze-thaw cycles.

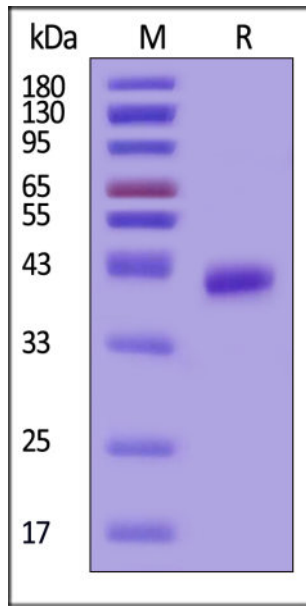
This product is stable after storage at:

- -20°C to -70°C for 12 months in lyophilized state;
- -70°C for 3 months under sterile conditions after reconstitution.

ACRO Quality Management System

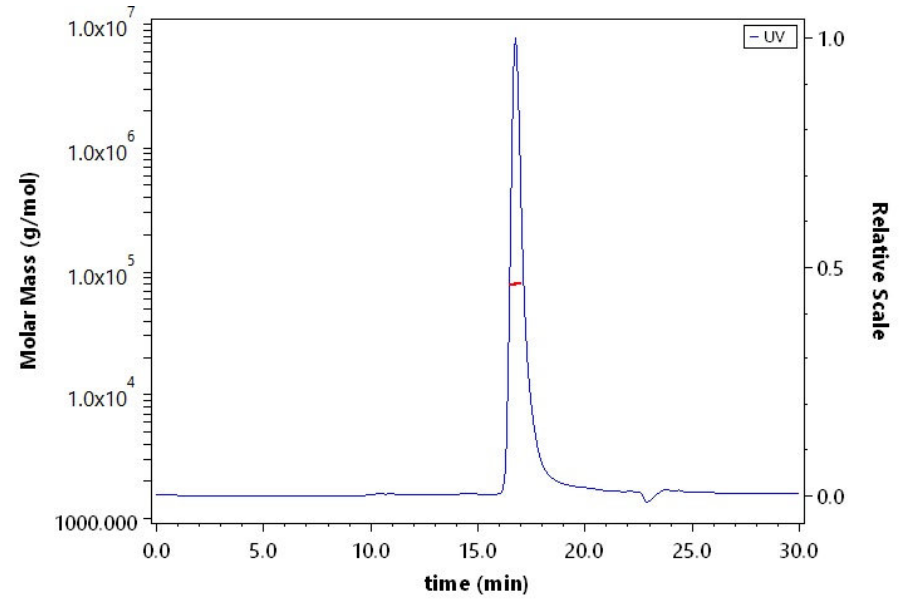
- [QMS\(ISO, GMP\)](#)
- [Quality Advantages](#)
- [Quality Control Process](#)

SDS-PAGE



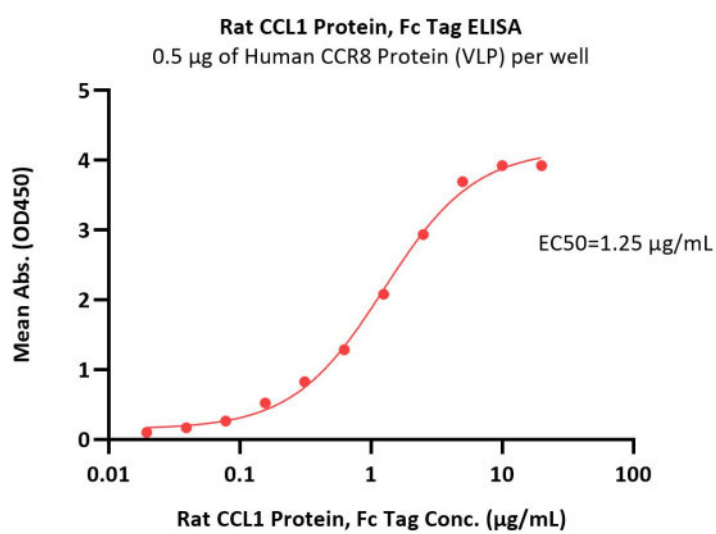
Rat CCL1 Protein, Fc Tag on SDS-PAGE under reducing (R) condition. The gel was stained with Coomassie Blue. The purity of the protein is greater than 95% (With [Star Ribbon Pre-stained Protein Marker](#)).

SEC-MALS



The purity of Rat CCL1 Protein, Fc Tag (Cat. No. CC1-R5253) is more than 95% and the molecular weight of this protein is around 70-90 kDa verified by SEC-MALS.

Bioactivity-ELISA



Immobilized Human CCR8 Protein (VLP) (Cat. No. CC8-H52P5) at 5 µg/mL (100 µL/well) can bind Rat CCL1 Protein, Fc Tag (Cat. No. CC1-R5253) with a linear range of 0.02-2.5 µg/mL (QC tested).

Background

Chemokines form a superfamily of secreted proteins involved in immunoregulatory and inflammatory processes. The superfamily is divided into four subfamilies based on the arrangement of the N-terminal cysteine residues of the mature peptide. CCL1, a member of the CC subfamily, is secreted by activated T cells and displays chemotactic activity for monocytes but not for neutrophils. It binds to the chemokine (C-C motif) receptor 8.

Discounts, Gifts,
and more!



www.acrobiosystems.com

