

# Human CCR6 Full Length Protein, Flag,His Tag (Detergent)

Catalog # CC6-H51D3



BIOSYSTEMS  
**Acro**

## Application

- Immunization
- Affinity testing ([SPR](#) / [BLI](#))
- Screening ([ELISA](#))

## Synonym

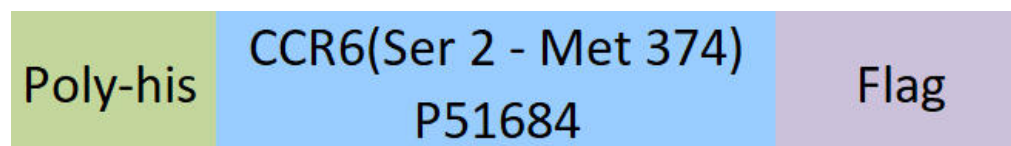
BN-1, C-C CKR-6, CC-CKR-6, CCR-6, CD196, CKR-L3, CKRL3, CMKBR6, DCR2, DRY6, GPR29, GPRCY4, STRL22

## Source

Detergent Human CCR6 Full Length Protein, Flag,His Tag (CC6-H51D3) is expressed from *E. coli* system. It contains AA Ser 2 - Met 374 (Accession # [P51684](#)).

Predicted N-terminus: Met

## Molecular Characterization

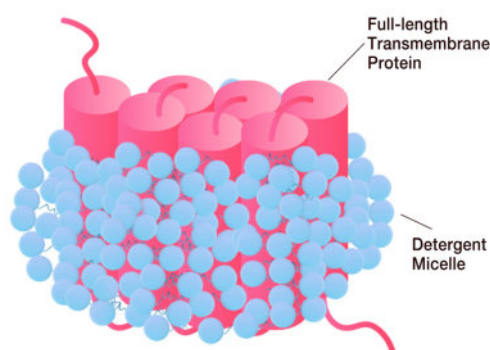


This protein carries a polyhistidine tag at the N-terminus and a Flag tag at the C-terminus.

The protein has a calculated MW of 48.1 kDa. The protein migrates as 41-42 kDa, 65-75 kDa and 95-110 kDa when calibrated against [Star Ribbon Pre-stained Protein Marker](#) under reducing (R) condition (SDS-PAGE).

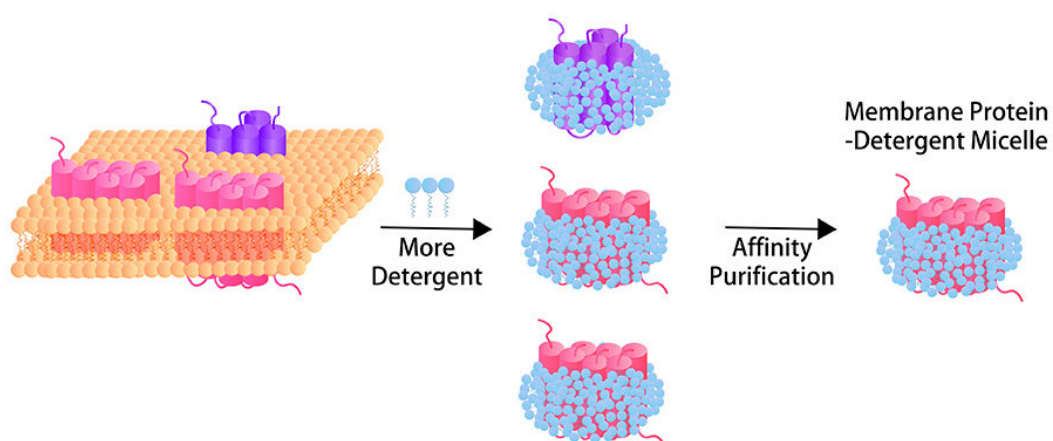
\*The detergent Buffer B (Cat. No. [LG-13](#)) is sold separately and not included in protein, you can follow [the link](#) for product information.

### • Structure



Each full-length transmembrane protein is encapsulated by detergent micelle.

### • Synthesis Process



Through **mild detergent micelle extraction**, dedicated solubilization, and stringent affinity purification, we maximally retain the native transmembrane conformation of full-length transmembrane proteins throughout downstream purification. This workflow yields purified, detergent-solubilized proteins free of unrelated membrane impurities and exogenous scaffold proteins, with **exceptional purity, accurate quantitation**, and well-preserved biological activity—ideal for immunization, binding assays in antibody discovery and screening (ELISA) and affinity testing (SPR and BLI), etc.

## Endotoxin

Less than 1.0 EU per  $\mu\text{g}$  by the LAL method / rFC method.

## Purity

>90% as determined by SDS-PAGE.

## Formulation

**This product is not suitable for cell based experiments due to cytotoxicity of detergent.**

**Detergent buffer is INDISPENSABLE to keep membrane protein soluble and active, under no circumstances should you remove detergent.**

**Detergent buffer is sold separately and not included in protein, and please contact us if you need the buffer.**

**If glycerol is not compatible with your application, remove glycerol just before the immediate experiment, and NEVER store glycerol-free protein solution.**

Supplied as 0.2  $\mu$ m filtered solution in 50 mM HEPES, 150 mM NaCl, Buffer B, CHS, pH7.5 with glycerol as protectant.

Contact us for customized product form or formulation.

## Shipping

**This product is supplied and shipped with dry ice, please inquire the shipping cost.**

## Storage

**Please avoid repeated freeze-thaw cycles.**

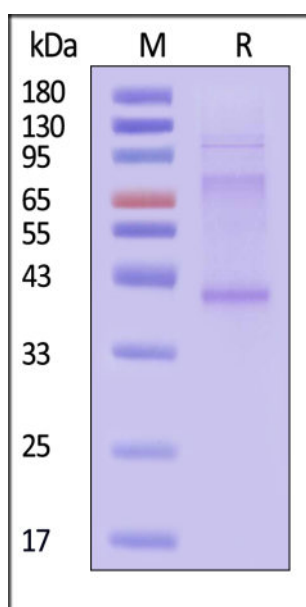
This product is stable after storage at:

- The product MUST be stored at -70°C or lower upon receipt;
- -70°C for 6 months under sterile conditions.

## ACRO Quality Management System

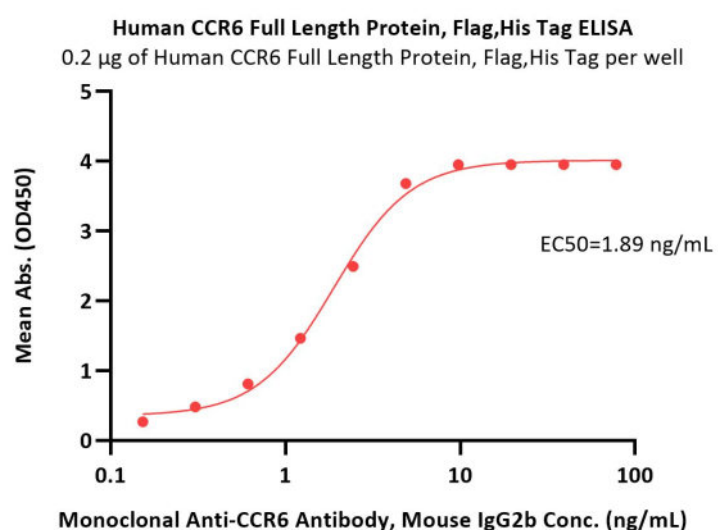
- [QMS\(ISO, GMP\)](#)
- [Quality Advantages](#)
- [Quality Control Process](#)

## SDS-PAGE



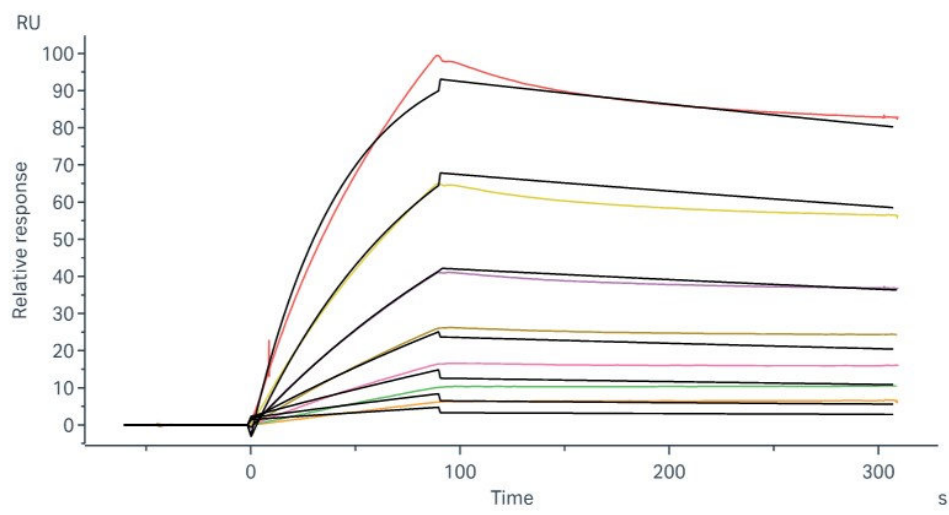
Human CCR6 Full Length Protein, Flag,His Tag on SDS-PAGE under reducing (R) condition. The gel was stained with Coomassie Blue. The purity of the protein is greater than 90% (With [Star Ribbon Pre-stained Protein Marker](#)).

## Bioactivity-ELISA



Immobilized Human CCR6 Full Length Protein, Flag,His Tag (Cat. No. CC6-H51D3) at 2  $\mu$ g/mL (100  $\mu$ L/well) can bind Monoclonal Anti-CCR6 Antibody, Mouse IgG2b with a linear range of 0.2-5 ng/mL (QC tested).

## Bioactivity-SPR



Monoclonal Anti-CCR6 Antibody, Mouse IgG2b captured on CM5 chip via anti-mouse antibodies surface can bind Human CCR6 Full Length Protein, Flag,His Tag (Cat. No. CC6-H51D3) with an affinity constant of 61 nM as determined in a SPR assay (Biacore 8K) (Routinely tested).

## Background

This gene encodes a member of the beta chemokine receptor family, which is predicted to be a seven transmembrane protein similar to G protein-coupled receptors. The gene is preferentially expressed by immature dendritic cells and memory T cells. The ligand of this receptor is macrophage inflammatory protein 3 alpha (MIP-3 alpha). This receptor has been shown to be important for B-lineage maturation and antigen-driven B-cell differentiation, and it may regulate the migration and recruitment of dendritic and T cells during inflammatory and immunological responses. Alternatively spliced transcript variants that encode the same protein have been described for this gene.

Discounts, Gifts,  
and more!



[www.acrobiosystems.com](http://www.acrobiosystems.com)



6/18/2026