

# Mouse CD2 / SRBC Protein, His Tag (MALS verified)

Catalog # CD2-M52H3



BIOSYSTEMS  
**Acro**

## Synonym

CD2, SRBC, LFA-2, T11

## Source

Mouse CD2 Protein, His Tag (CD2-M52H3) is expressed from human 293 cells (HEK293). It contains AA Arg 23 - Ser 203 (Accession # [P08920-1](#)).

Predicted N-terminus: Arg 23

## Molecular Characterization

CD2(Arg 23 - Ser 203)  
P08920-1

Poly-his

This protein carries a polyhistidine tag at the C-terminus.

The protein has a calculated MW of 22.6 kDa. The protein migrates as 30-43 kDa when calibrated against [Star Ribbon Pre-stained Protein Marker](#) under reducing (R) condition (SDS-PAGE) due to glycosylation.

## Purity

>90% as determined by SDS-PAGE.

>90% as determined by SEC-MALS.

## Formulation

Lyophilized from 0.22 µm filtered solution in PBS, pH7.4 with trehalose as protectant.

Contact us for customized product form or formulation.

## Reconstitution

Please see Certificate of Analysis for specific instructions.

**For best performance, we strongly recommend you to follow the reconstitution protocol provided in the CoA.**

## Storage

For long term storage, the product should be stored at lyophilized state at -20°C or lower.

**Please avoid repeated freeze-thaw cycles.**

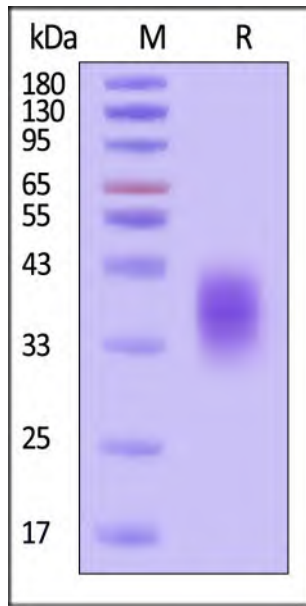
This product is stable after storage at:

- -20°C to -70°C for 12 months in lyophilized state;
- -70°C for 3 months under sterile conditions after reconstitution.

## ACRO Quality Management System

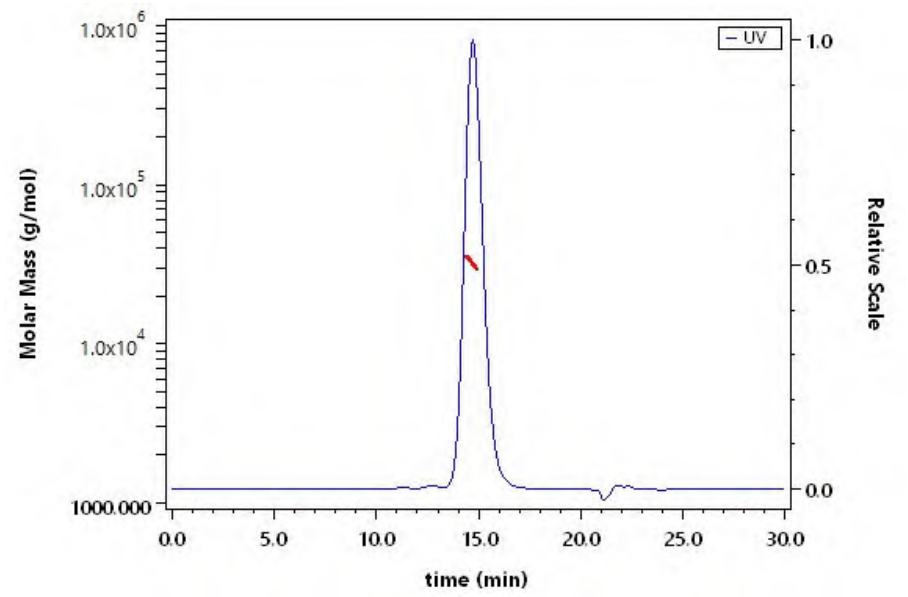
- [QMS\(ISO, GMP\)](#)
- [Quality Advantages](#)
- [Quality Control Process](#)

## SDS-PAGE



Mouse CD2 Protein, His Tag on SDS-PAGE under reducing (R) condition. The gel was stained with Coomassie Blue. The purity of the protein is greater than 90% (With [Star Ribbon Pre-stained Protein Marker](#)).

## SEC-MALS



The purity of Mouse CD2 Protein, His Tag (Cat. No. CD2-M52H3) is more than 90% and the molecular weight of this protein is around 25-35 kDa verified by SEC-MALS.

## Background

T-cell surface antigen CD2 is also known as Erythrocyte receptor, LFA-2, LFA-3 receptor, Rosette receptor, T-cell surface antigen T11/Leu-5 and SRBC, is a single-pass type I membrane protein found on the surface of T cells and natural killer (NK) cells. CD2 is a member of the immunoglobulin superfamily. CD2 / SRBC contains 1 Ig-like C2-type (immunoglobulin-like) domain and 1 Ig-like V-type (immunoglobulin-like) domain. CD2 / SRBC interacts with other adhesion molecules, such as lymphocyte function-associated antigen-3 (LFA-3 / CD58) in humans, or CD48 in rodents, which are expressed on the surfaces of other cells. In addition to its adhesive properties, CD2 also acts as a co-stimulatory molecule on T and NK cells. CD2 is a specific marker for T cells and NK cells, and can therefore be used in immunohistochemistry to identify the presence of such cells in tissue sections.

Discounts, Gifts,  
and more!



[www.acrobiosystems.com](http://www.acrobiosystems.com)



4/16/2026