

# Human ALCAM Protein, Fc Tag

Catalog # CD6-H5259



BIOSYSTEMS  
**Acro**

## Synonym

CD166, ALCAM, CD6L, KG-CAM, MEMD

## Source

Human ALCAM, Fc Tag (CD6-H5259) is expressed from human 293 cells (HEK293). It contains AA Trp 28 - Ala 526 (Accession # [NP\\_001618](#)).

Predicted N-terminus: Trp 28

## Molecular Characterization

ALCAM(Trp 28 - Ala 526) NP_001618	Fc(Pro 100 - Lys 330) P01857
--------------------------------------	---------------------------------

This protein carries a human IgG1 Fc tag at the C-terminus.

The protein has a calculated MW of 82.6 kDa. The protein migrates as 95-116 kDa under reducing (R) condition (SDS-PAGE) due to glycosylation.

## Endotoxin

Less than 1.0 EU per µg by the LAL method / rFC method.

## Purity

>95% as determined by SDS-PAGE.

## Formulation

Lyophilized from 0.22 µm filtered solution in Tris with Glycine, Arginine and NaCl, pH7.5 with trehalose as protectant.

Contact us for customized product form or formulation.

## Reconstitution

Please see Certificate of Analysis for specific instructions.

**For best performance, we strongly recommend you to follow the reconstitution protocol provided in the CoA.**

## Storage

For long term storage, the product should be stored at lyophilized state at -20°C or lower.

**Please avoid repeated freeze-thaw cycles.**

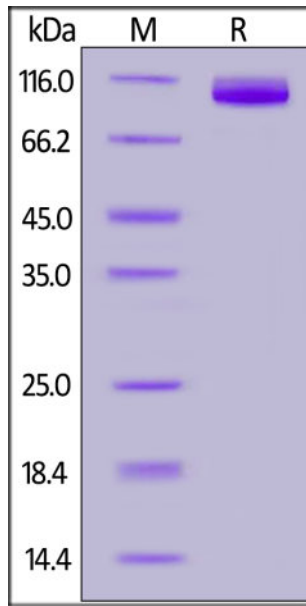
This product is stable after storage at:

- -20°C to -70°C for 12 months in lyophilized state;
- -70°C for 3 months under sterile conditions after reconstitution.

## ACRO Quality Management System

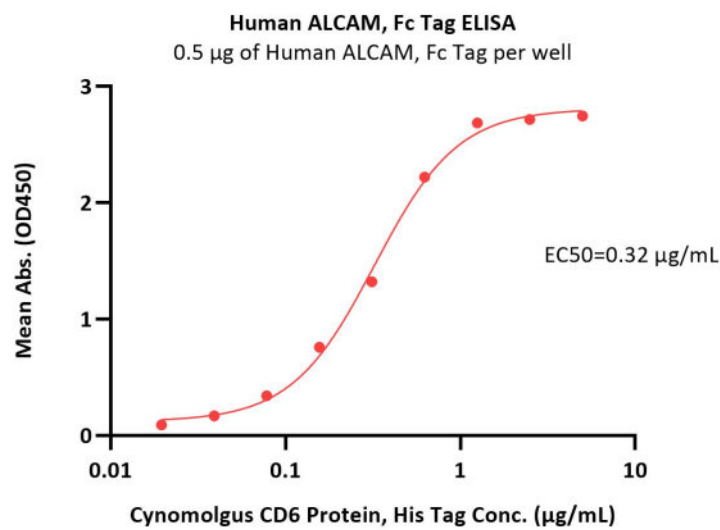
- [QMS\(ISO, GMP\)](#)
- [Quality Advantages](#)
- [Quality Control Process](#)

## SDS-PAGE

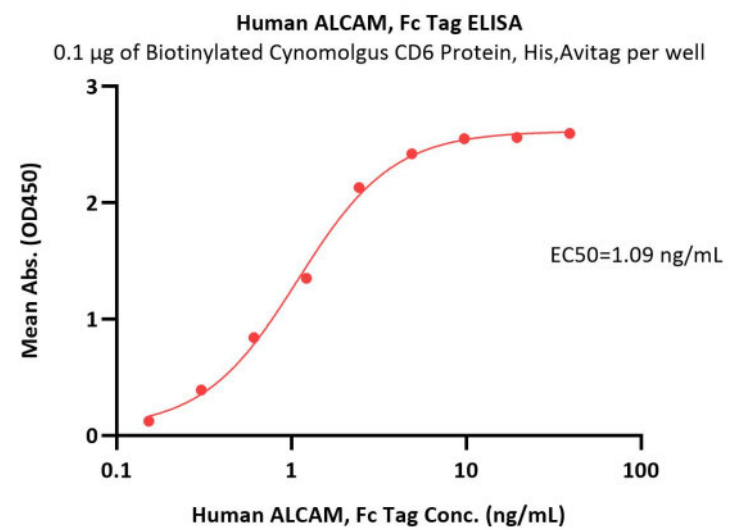


Human ALCAM, Fc Tag on SDS-PAGE under reducing (R) condition. The gel was stained with Coomassie Blue. The purity of the protein is greater than 95%.

## Bioactivity-ELISA



Immobilized Human ALCAM, Fc Tag (Cat. No. CD6-H5259) at 5 µg/mL (100 µL/well) can bind Cynomolgus CD6 Protein, His Tag (Cat. No. CD6-C52H3) with a linear range of 0.02-0.625 µg/mL (Routinely tested).



Immobilized Biotinylated Cynomolgus CD6 Protein, His,Avitag (Cat. No. CD6-C82E3) at 1 µg/mL (100 µL/well) on streptavidin precoated (0.5 µg/well) plate can bind Human ALCAM, Fc Tag (Cat. No. CD6-H5259) with a linear range of 0.3-2 ng/mL (Routinely tested).

## Background

CD166 antigen is a 100-105 kD type I transmembrane glycoprotein that is a member of the immunoglobulin superfamily of proteins, which is also known as Activated leukocyte cell adhesion molecule (ALCAM) in human, SC-1/DM-GRASP/BEN in the chicken, and KG-CAM in the rat. CD166 is a cell adhesion molecule that binds to CD6. CD166 involved in neurite extension by neurons via heterophilic and homophilic interactions.

Discounts, Gifts,  
and more!



[www.acrobiosystems.com](http://www.acrobiosystems.com)



3/26/2026