

# Mouse CD8 alpha / CD8A Protein, His Tag, low endotoxin

Catalog # CDA-M52H9



BIOSYSTEMS  
**Acro**

Surprise Inside!

## Synonyms

CD8A, CD8, Leu2, MAL, p32

## Source

Mouse CD8 alpha Protein, His Tag (CDA-M52H9) is expressed from human 293 cells (HEK293). It contains AA Lys 28 - Tyr 196 (Accession # [P01731-1](#)).

Predicted N-terminus: Lys 28

## Molecular Characterization

CD8A(Lys 28 - Tyr 196)  
P01731-1

Poly-his

This protein carries a polyhistidine tag at the C-terminus.

The protein has a calculated MW of 20.8 kDa. The protein migrates as 28-38 kDa when calibrated against [Star Ribbon Pre-stained Protein Marker](#) under reducing (R) condition (SDS-PAGE) due to glycosylation.

## Endotoxin

Less than 0.01 EU per µg by the LAL method / rFC method.

## Purity

>90% as determined by SDS-PAGE.

## Formulation

Lyophilized from 0.22 µm filtered solution in PBS, pH7.4 with trehalose as protectant.

Contact us for customized product form or formulation.

## Reconstitution

Please see Certificate of Analysis for specific instructions.

**For best performance, we strongly recommend you to follow the reconstitution protocol provided in the CoA.**

## Shipping and Storage

This product is shipped at ambient temperature.

For long term storage, the product should be stored at lyophilized state at -20°C or lower.

**Please avoid repeated freeze-thaw cycles.**

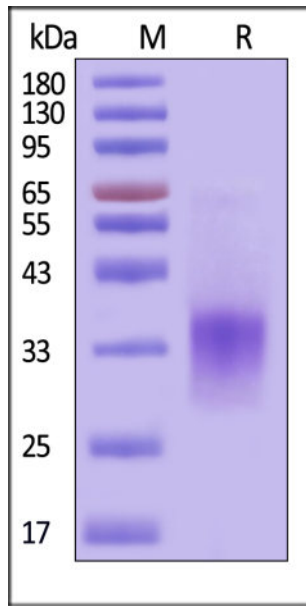
This product is stable after storage at:

- -20°C to -70°C for 12 months in lyophilized state;
- -70°C for 3 months under sterile conditions after reconstitution.

## ACRO Quality Management System

- [QMS\(ISO, GMP\)](#)
- [Quality Advantages](#)
- [Quality Control Process](#)

## SDS-PAGE



Mouse CD8 alpha Protein, His Tag on SDS-PAGE under reducing (R) condition. The gel was stained with Coomassie Blue. The purity of the protein is greater than 90% (With [Star Ribbon Pre-stained Protein Marker](#)).

## Background

CD8 alpha is a critical surface protein on cytotoxic T cells. It acts as a co-receptor for the T-cell receptor (TCR), binding to MHC class I molecules to stabilize antigen recognition and enhance T-cell activation. It is predominantly expressed on the surface of cytotoxic T lymphocytes (CTLs) and a subset of natural killer (NK) cells. Anti-CD8 antibody are usually used to modify LNP in in vivo CAR, CD8 alpha protein could be used to detect anti-CD8 antibody density.

Discounts, Gifts,  
and more!



[www.acrobiosystems.com](http://www.acrobiosystems.com)

