

Human Claudin-18.1 (1-200) Protein, His,Flag Tag (Detergent)

Catalog # CL1-H51D3



BIOSYSTEMS
Acro

Surprise Inside!

Synonym

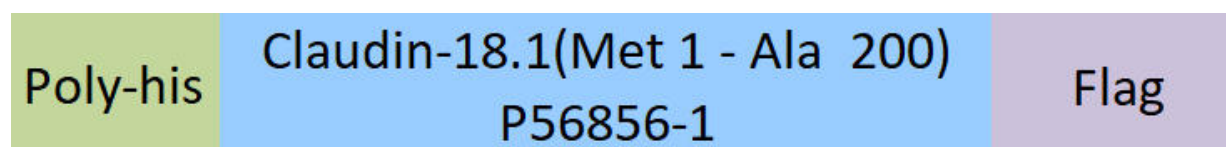
Claudin-18.1, CLDN18, Claudin-18

Source

Human Claudin-18.1 (1-200) Protein, His,Flag Tag (CL1-H51D3) is expressed from *E. coli* cells. It contains AA Met 1 - Ala 200 (Accession # [P56856-1](#)).

Predicted N-terminus: Met

Molecular Characterization



[Other Tags and Version Biotin & Other Labeled Version](#)

This protein carries a polyhistidine tag at the N-terminus and a Flag tag at the C-terminus. The protein has a calculated MW of 27.0 kDa.

Purity

>90% as determined by SDS-PAGE.

Formulation

This product is not suitable for cell based experiments due to cytotoxicity of DDM.

DDM and CHS are INDISPENSABLE to keep membrane protein soluble and active, under no circumstances should you remove DDM and CHS.

DDM/CHS buffer (DC-11) is sold separately and not included in protein, and please contact us if you need the buffer.

If glycerol is not compatible with your application, remove glycerol just before the immediate experiment, and NEVER store glycerol-free protein solution.

Supplied as 0.2 μ m filtered solution in 50 mM HEPES, 150 mM NaCl, DDM, pH7.5, CHS with glycerol as protectant.

Contact us for customized product form or formulation.

Shipping

This product is supplied and shipped with dry ice, please inquire the shipping cost.

Storage

Please avoid repeated freeze-thaw cycles.

This product is stable after storage at:

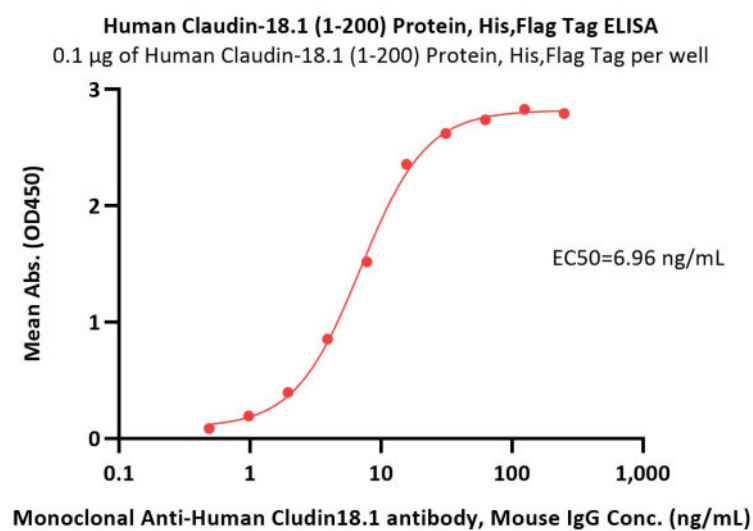
- The product **MUST** be stored at -70°C or lower upon receipt;
- -70°C for 3 months under sterile conditions.

ACRO Quality Management System

- [QMS\(ISO, GMP\)](#)
- [Quality Advantages](#)
- [Quality Control Process](#)

*The DDM/CHS buffer (Cat. No. [DC-11](#)) is sold separately and not included in protein, you can follow [this link](#) for product information.

Bioactivity-ELISA



Immobilized Human Claudin-18.1 (1-200) Protein, His,Flag Tag (Cat. No. CL1-H51D3) at 1 μ g/mL (100 μ L/well) can bind Monoclonal Anti-Human

Cludin-18.1 antibody, Mouse IgG with a linear range of 0.5-16 ng/mL (QC tested).

Background

This gene encodes a member of the claudin family. Claudins are integral membrane proteins and components of tight junction strands. Tight junction strands serve as a physical barrier to prevent solutes and water from passing freely through the paracellular space between epithelial or endothelial cell sheets, and also play critical roles in maintaining cell polarity and signal transductions. This gene is upregulated in patients with ulcerative colitis and highly overexpressed in infiltrating ductal adenocarcinomas. PKC/MAPK/AP-1 (protein kinase C/mitogen-activated protein kinase/activator protein-1) dependent pathway regulates the expression of this gene in gastric cells. Alternatively spliced transcript variants encoding different isoforms have been identified. [provided by RefSeq, Jun 2010]



www.acrobiosystems.com

11/12/2025
