



Application

- Immunization
- Cell based assay ([FACS](#) or functional assay)
- Affinity testing ([SPR](#) / [BLI](#))
- Screening ([ELISA](#))

Synonym

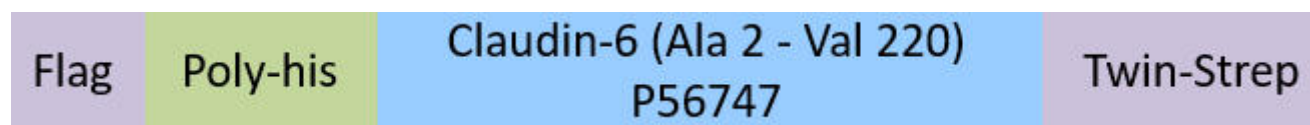
Claudin-6, CLDN6

Source

Nanodisc-pro Human Claudin-6 Full Length Protein, Flag,His Tag&Twin-Strep Tag (CL6-H52D3) is expressed from human 293 cells (HEK293). It contains AA Ala 2 - Val 220 (Accession # [P56747](#)).

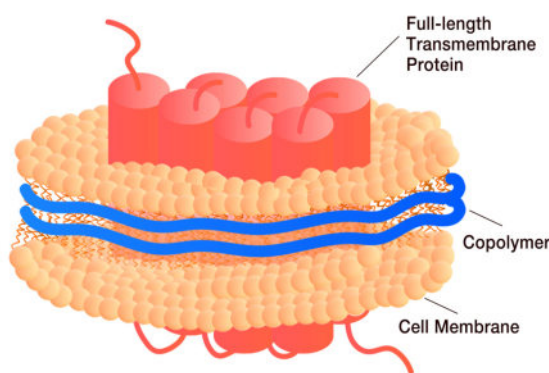
Predicted N-terminus: Met

Molecular Characterization



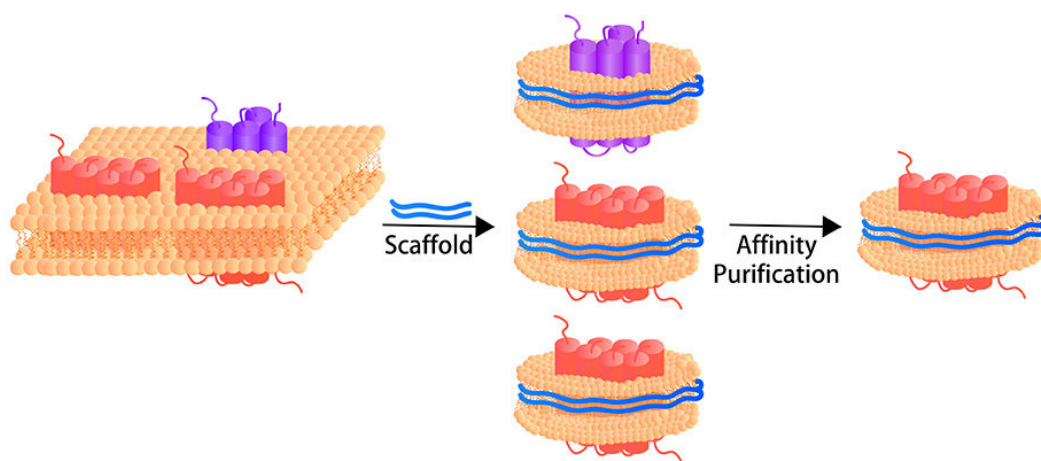
This protein carries a flag tag at the N-terminus, followed by a polyhistidine tag, and a twin-strep tag at the C-terminus. The protein has a calculated MW of 29.7 kDa.

• Structure



Nanodisc-pro membrane protein is wrapped by a piece of cell membrane and copolymer.

• Synthesis Process



Nanodisc-pro membrane protein extraction is a gentle, non-disruptive process that **directly isolates full-length transmembrane proteins together with their surrounding native phospholipids from cellular membranes**, without breaking or disturbing the original membrane structure. This preserves the membrane protein's natural conformational landscape and native lipid environment, yielding stable nanodisc that retain cellular phospholipids and eliminate the need for detergent solubilization, with fully preserved biological activity—making them **ideal for cell-based assays such as FACS** and binding assays in antibody discovery and screening (ELISA), etc.

Endotoxin

Less than 1.0 EU per μg by the LAL method / rFC method.

Formulation

Supplied as 0.2 μm filtered solution in 20 mM HEPES, 150 mM NaCl, pH7.5 with glycerol as protectant.

Contact us for customized product form or formulation.

Shipping

This product is supplied and shipped with dry ice, please inquire the shipping cost.

Storage

Please avoid repeated freeze-thaw cycles.

This product is stable after storage at:

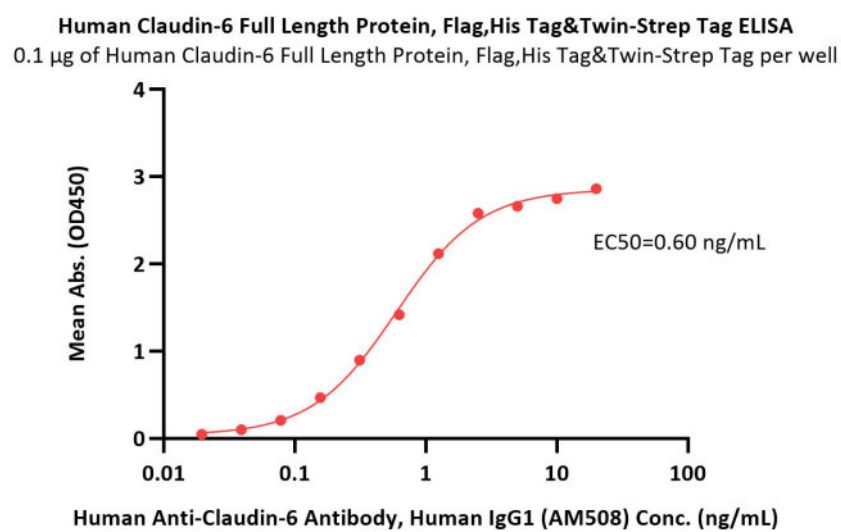
- The product MUST be stored at -70°C or lower upon receipt;
- -70°C for 12 months under sterile conditions.

ACRO Quality Management System

- [QMS\(ISO, GMP\)](#)
- [Quality Advantages](#)
- [Quality Control Process](#)

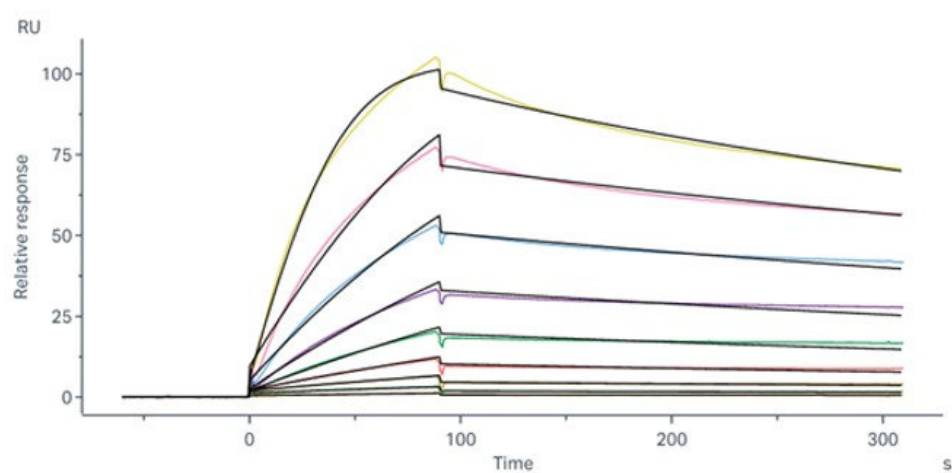
*The isotype control of empty/mock nanodisc (Cat. No. [APO-H5143](#)) is sold separately and not included in protein, you can follow [the link](#) for product information.

Bioactivity-ELISA



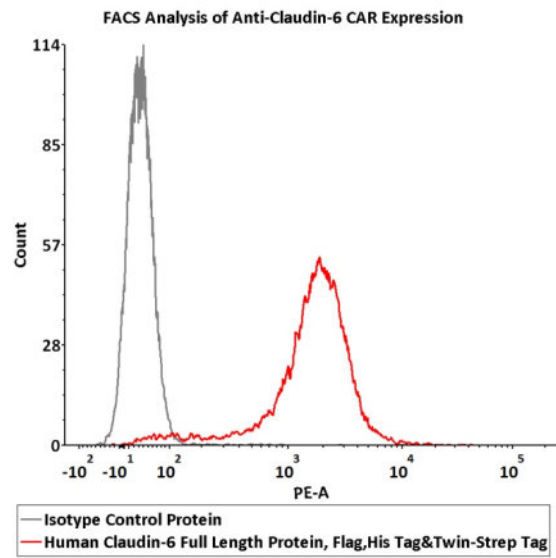
Immobilized Human Claudin-6 Full Length Protein, Flag,His Tag&Twin-Strep Tag (Cat. No. CL6-H52D3) at 1 µg/mL (100 µL/well) can bind Human Anti-Claudin-6 Antibody, Human IgG1 (AM508) with a linear range of 0.02-3 ng/mL (QC tested).

Bioactivity-SPR



Human Anti-Claudin-6 Antibody, Human IgG1 (AM508) captured on Protein A Chip can bind Human Claudin-6 Full Length Protein, Flag,His Tag&Twin-Strep Tag (Cat. No. CL6-H52D3) with an affinity constant of 6.21 nM as determined in a SPR assay (Biacore 8K) (Routinely tested).

Bioactivity-FACS



2e5 of Anti-Claudin-6 CAR-293 cells were stained with 100 μ L of 3 μ g/mL of Human Claudin-6 Full Length Protein, Flag,His Tag&Twin-Strep Tag (Nanodisc-pro) (Cat. No. CL6-H52D3) and isotype control protein respectively, washed and then followed by PE anti-His Tag Antibody and analyzed with FACS (Routinely tested).

Background

An oncofetal tight junction protein absent in normal adult tissues but aberrantly expressed in ovarian, endometrial, and testicular cancers. Its strict cancer specificity and extracellular accessibility make it an ideal candidate for CAR-T cell therapy and bispecific antibody development.

Discounts, Gifts,
and more!



www.acrobiosystems.com

