

Mouse CLEC7A Protein, His Tag (HPLC verified)

Catalog # CL7-M5243



BIOSYSTEMS
Acro

Surprise Inside!

Synonym

BGR, CANDF4, CD369, CLECSF12, DECTIN1, SCARE2

Source

Mouse CLEC7A Protein, His Tag (CL7-M5243) is expressed from human 293 cells (HEK293). It contains AA Gly 71 - Leu 244 (Accession # [Q6QLQ4](#)).

Molecular Characterization

Poly-his

CLEC7A(Gly 71 - Leu 244)
Q6QLQ4

This protein carries a polyhistidine tag at the N-terminus.

The protein has a calculated MW of 21.8 kDa. The protein migrates as 27-37 kDa when calibrated against [Star Ribbon Pre-stained Protein Marker](#) under reducing (R) condition (SDS-PAGE) due to glycosylation.

Purity

>90% as determined by SDS-PAGE.

>95% as determined by SEC-HPLC.

Formulation

Lyophilized from 0.22 µm filtered solution in PBS, pH7.4 with trehalose as protectant.

Contact us for customized product form or formulation.

Reconstitution

Please see Certificate of Analysis for specific instructions.

For best performance, we strongly recommend you to follow the reconstitution protocol provided in the CoA.

Storage

For long term storage, the product should be stored at lyophilized state at -20°C or lower.

Please avoid repeated freeze-thaw cycles.

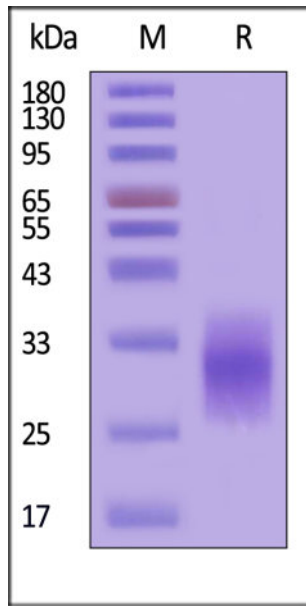
This product is stable after storage at:

- -20°C to -70°C for 12 months in lyophilized state;
- -70°C for 3 months under sterile conditions after reconstitution.

ACRO Quality Management System

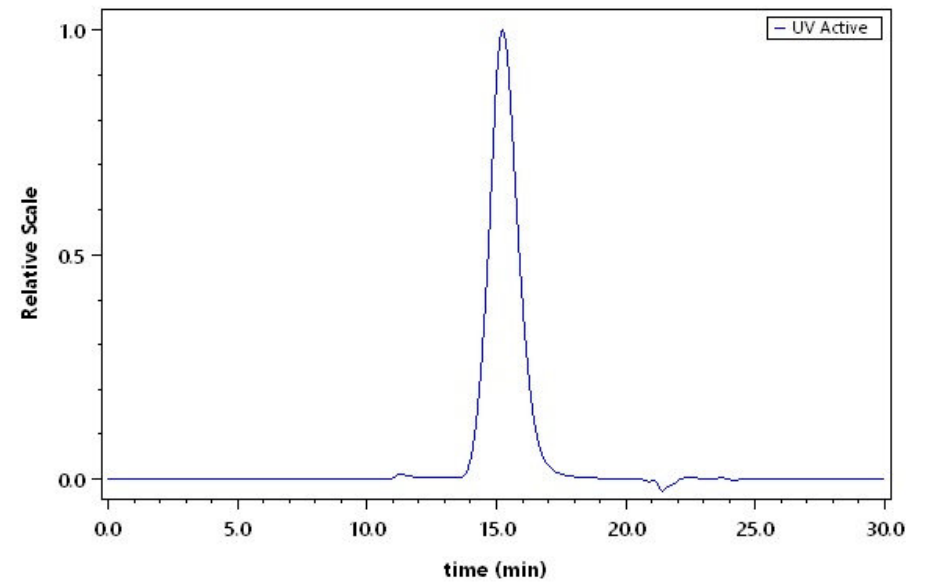
- [QMS\(ISO, GMP\)](#)
- [Quality Advantages](#)
- [Quality Control Process](#)

SDS-PAGE



Mouse CLEC7A Protein, His Tag on SDS-PAGE under reducing (R) condition. The gel was stained with Coomassie Blue. The purity of the protein is greater than 90% (With [Star Ribbon Pre-stained Protein Marker](#)).

SEC-HPLC



The purity of Mouse CLEC7A Protein, His Tag (Cat. No. CL7-M5243) was greater than 95% as determined by SEC-HPLC.

Background

Lectin that functions as pattern recognizing receptor (PRR) specific for beta-1,3-linked and beta-1,6-linked glucans, which constitute cell wall constituents from pathogenic bacteria and fungi (PubMed:11567029, PubMed:12423684).

Necessary for the TLR2-mediated inflammatory response and activation of NF-kappa-B: upon beta-glucan binding, recruits SYK via its ITAM motif and promotes a signaling cascade that activates some CARD domain-BCL10-MALT1 (CBM) signalosomes, leading to the activation of NF-kappa-B and MAP kinase p38 (MAPK11, MAPK12, MAPK13 and/or MAPK14) pathways which stimulate expression of genes encoding pro-inflammatory cytokines and chemokines (By similarity).

Enhances cytokine production in macrophages and dendritic cells (By similarity).

Mediates production of reactive oxygen species in the cell (By similarity).

Mediates phagocytosis of *C.albicans* conidia (PubMed:17230442).

Binds T-cells in a way that does not involve their surface glycans and plays a role in T-cell activation. Stimulates T-cell proliferation. Induces phosphorylation of SCIMP after binding beta-glucans (By similarity).

Discounts, Gifts,
and more!



www.acrobiosystems.com

