

Human CLEC5A / MDL-1 Protein, Fc Tag, low Endotoxin (MALS & SPR verified)

Catalog # CLA-H5263



BIOSYSTEMS
Acro

Surprise Inside!

Synonyms

CLEC5A, CLECSF5, superfamily member 5, C-type lectin domain family 5, member A, MDL1, MDL-1, DAP12-associating lectin 1

Source

Human CLEC5A Protein, Fc Tag (CLA-H5263) is expressed from human 293 cells (HEK293). It contains AA Pro 28 - Lys 188 (Accession # [Q9NY25-1](#)).

Predicted N-terminus: Pro

Molecular Characterization

Fc(Pro 100 - Lys 330) P01857-1	CLEC5A(Pro 28 - Lys 188) Q9NY25-1
-----------------------------------	--------------------------------------

This protein carries a human IgG1 Fc tag at the N-terminus.

The protein has a calculated MW of 44.8 kDa. The protein migrates as 53-65 kDa when calibrated against [Star Ribbon Pre-stained Protein Marker](#) under reducing (R) condition (SDS-PAGE) due to glycosylation.

Endotoxin

Less than 0.01 EU per µg by the LAL method / rFC method.

Purity

>90% as determined by SDS-PAGE.

>95% as determined by SEC-MALS.

Formulation

Lyophilized from 0.22 µm filtered solution in PBS, pH7.4 with trehalose as protectant.

Contact us for customized product form or formulation.

Reconstitution

Please see Certificate of Analysis for specific instructions.

For best performance, we strongly recommend you to follow the reconstitution protocol provided in the CoA.

Shipping and Storage

This product is shipped at ambient temperature.

For long term storage, the product should be stored at lyophilized state at -20°C or lower.

Please avoid repeated freeze-thaw cycles.

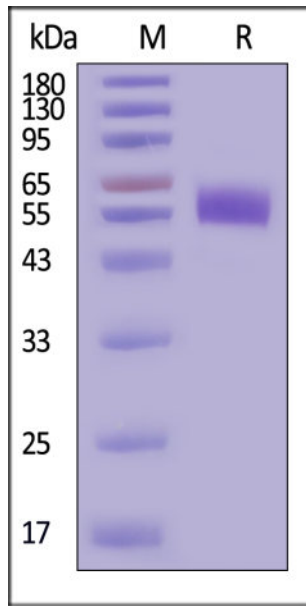
This product is stable after storage at:

- -20°C to -70°C for 12 months in lyophilized state;
- -70°C for 3 months under sterile conditions after reconstitution.

ACRO Quality Management System

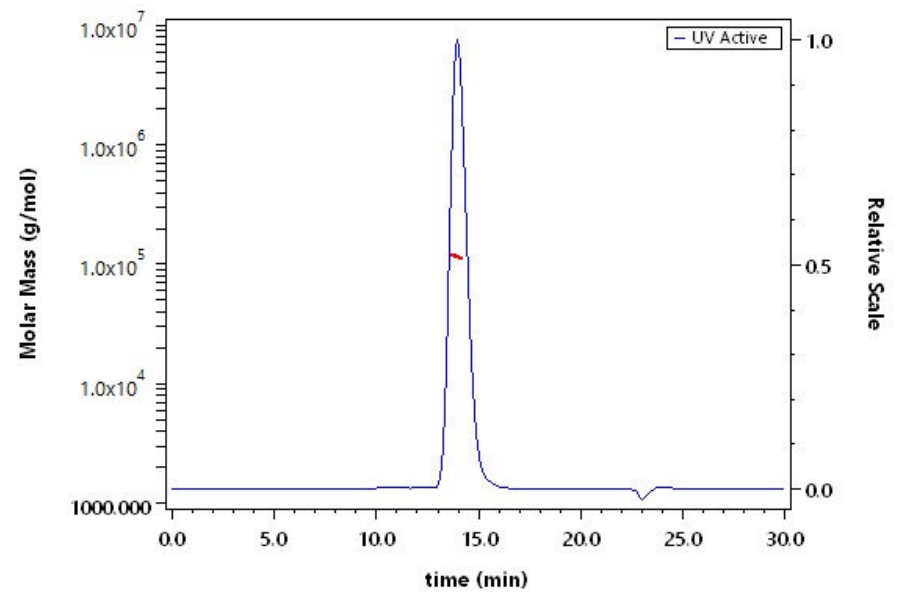
- [QMS\(ISO, GMP\)](#)
- [Quality Advantages](#)
- [Quality Control Process](#)

SDS-PAGE



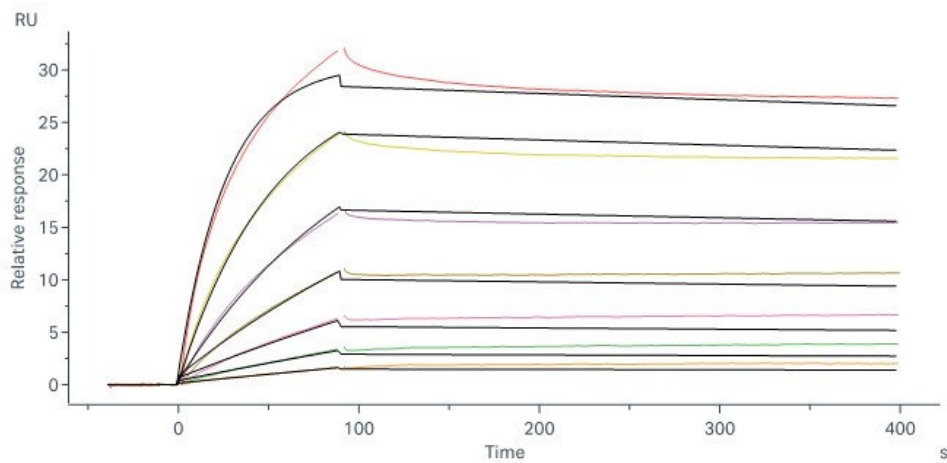
Human CLEC5A Protein, Fc Tag on SDS-PAGE under reducing (R) condition. The gel was stained with Coomassie Blue. The purity of the protein is greater than 90% (With [Star Ribbon Pre-stained Protein Marker](#)).

SEC-MALS



The purity of Human CLEC5A Protein, Fc Tag (Cat. No. CLA-H5263) is more than 95% and the molecular weight of this protein is around 90-120 kDa verified by SEC-MALS.

Bioactivity-SPR



Recombinant Human Galectin-9 Protein, CF (E.Coli) immobilized on CM5 Chip can bind Human CLEC5A Protein, Fc Tag (Cat. No. CLA-H5263) with an affinity constant of 0.0145 nM as determined in a SPR assay (Biacore 8K) (QC tested).

Background

CLEC5A, also known as MDL1 and MDL-1, is a member of the C-type lectin/C-type lectin-like domain (CTL/CTLD) superfamily. CLEC5A is expressed on monocytes, macrophages, and neutrophils. Its expression is up-regulated on monocytes in rheumatoid arthritis. CLEC5A with dnax-activation protein 12 and may play a role in cell activation. It also functions as a positive regulator of osteoclastogenesis. CLEC5A acts as a key regulator of synovial injury and bone erosion during autoimmune joint inflammation. The binding of dengue virus to CLEC5A triggers signaling through the phosphorylation of TYROBP, this interaction does not result in viral entry, but stimulates proinflammatory cytokine release.

Discounts, Gifts,
and more!



www.acrobiosystems.com



6/30/2026