

# Cynomolgus Complement C1s Protein, His Tag (MALS verified)

Catalog # COS-C52H3



BIOSYSTEMS  
**Acro**

## Synonym

EDSPD2

## Source

Cynomolgus Complement C1s Protein, His Tag (COS-C52H3) is expressed from human 293 cells (HEK293). It contains AA Glu 16 - Asp 688 (Accession # [A0A2K5VQX9](#)).

Predicted N-terminus: Glu 16

## Molecular Characterization

Complement C1s(Glu 16 - Asp 688)  
A0A2K5VQX9

Poly-his

This protein carries a polyhistidine tag at the C-terminus.

The protein has a calculated MW of 76.7 kDa. The protein migrates as 80-95 kDa when calibrated against [Star Ribbon Pre-stained Protein Marker](#) under reducing (R) condition (SDS-PAGE) due to glycosylation.

## Endotoxin

Less than 1.0 EU per µg by the LAL method / rFC method.

## Purity

>90% as determined by SDS-PAGE.

>90% as determined by SEC-MALS.

## Formulation

Lyophilized from 0.22 µm filtered solution in 20 mM Tris, 150 mM NaCl, pH7.5 with trehalose as protectant.

Contact us for customized product form or formulation.

## Reconstitution

Please see Certificate of Analysis for specific instructions.

**For best performance, we strongly recommend you to follow the reconstitution protocol provided in the CoA.**

## Storage

For long term storage, the product should be stored at lyophilized state at -20°C or lower.

**Please avoid repeated freeze-thaw cycles.**

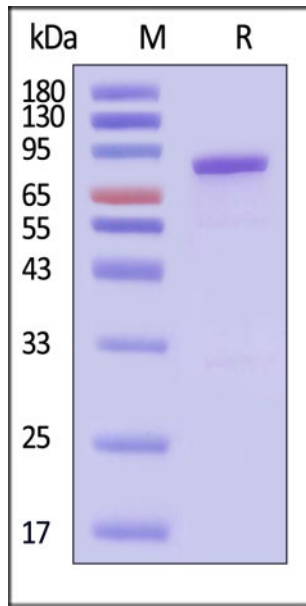
This product is stable after storage at:

- -20°C to -70°C for 12 months in lyophilized state;
- -70°C for 3 months under sterile conditions after reconstitution.

## ACRO Quality Management System

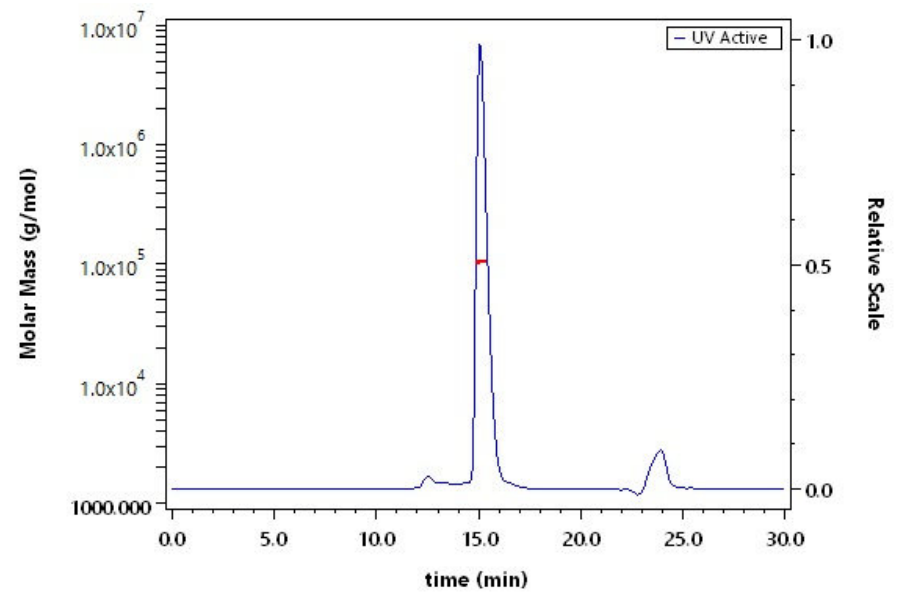
- [QMS\(ISO, GMP\)](#)
- [Quality Advantages](#)
- [Quality Control Process](#)

## SDS-PAGE



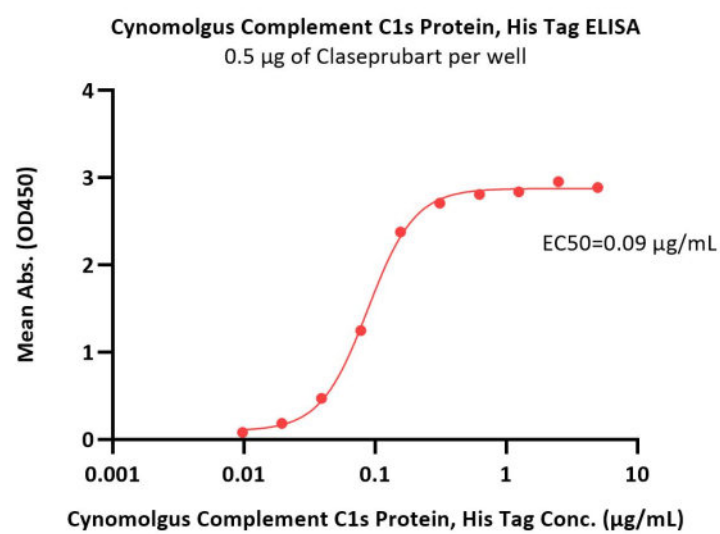
Cynomolgus Complement C1s Protein, His Tag on SDS-PAGE under reducing (R) condition. The gel was stained with Coomassie Blue. The purity of the protein is greater than 90% (With [Star Ribbon Pre-stained Protein Marker](#)).

## SEC-MALS



The purity of Cynomolgus Complement C1s Protein, His Tag (Cat. No. COS-C52H3) is more than 90% and the molecular weight of this protein is around 90-110 kDa verified by SEC-MALS.

## Bioactivity-ELISA



Immobilized Claseprubart at 5 µg/mL (100 µL/well) can bind Cynomolgus Complement C1s Protein, His Tag (Cat. No. COS-C52H3) with a linear range of 0.01-0.156 µg/mL (QC tested).

## Background

Complement C1s is a serine protease and a key component of the C1 complex in the classical complement pathway. One C1q molecule binds to a tetramer composed of two C1r and two C1s proteases to form the intact C1 complex. C1s circulates as a zymogen until activated by proteolytic cleavage from activated C1r. Its essential function is to cleave complement components C4 and C2, thereby initiating the formation of the C3 convertase (C4b2a). This step is critical for triggering downstream immune effector functions, including opsonization, inflammation, and membrane attack complex formation.

Discounts, Gifts,  
and more!



[www.acrobiosystems.com](http://www.acrobiosystems.com)



5/8/2026