

Human CXCL2 Protein, Fc Tag (MALS & SPR verified)

Catalog # CX2-H5253



BIOSYSTEMS
Acro

Synonym

C-X-C motif chemokine 2, Growth-regulated protein beta, Gro-beta, Macrophage inflammatory protein 2-alpha, MIP2-alpha, GRO2, GROB, MIP2A, SCYB2

Source

Human CXCL2, Fc Tag (CX2-H5253) is expressed from human 293 cells (HEK293). It contains AA Ala 35 - Asn 107 (Accession # [P19875](#)). Predicted N-terminus: Ala 35

Molecular Characterization

CXCL2(Ala 35 - Asn 107) P19875	Fc(Pro 100 - Lys 330) P01857-1
-----------------------------------	-----------------------------------

[Other Tags and Version Biotin & Other Labeled Version](#)

This protein carries a human IgG1 Fc tag at the C-terminus.

The protein has a calculated MW of 34.3 kDa. The protein migrates as 38-42 kDa under reducing (R) condition (SDS-PAGE) due to glycosylation.

Endotoxin

Less than 1.0 EU per µg by the LAL method / rFC method.

Purity

>95% as determined by SDS-PAGE.

>90% as determined by SEC-MALS.

Formulation

Lyophilized from 0.22 µm filtered solution in PBS, pH7.4 with trehalose as protectant.

Contact us for customized product form or formulation.

Reconstitution

Please see Certificate of Analysis for specific instructions.

For best performance, we strongly recommend you to follow the reconstitution protocol provided in the CoA.

Storage

For long term storage, the product should be stored at lyophilized state at -20°C or lower.

Please avoid repeated freeze-thaw cycles.

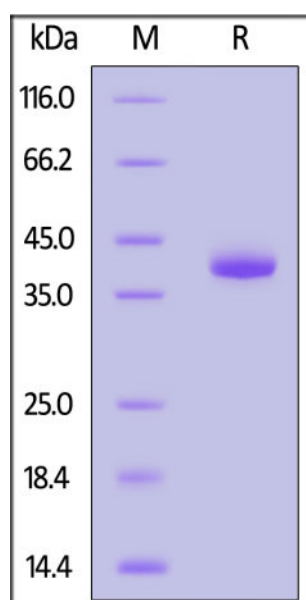
This product is stable after storage at:

- -20°C to -70°C for 12 months in lyophilized state;
- -70°C for 3 months under sterile conditions after reconstitution.

ACRO Quality Management System

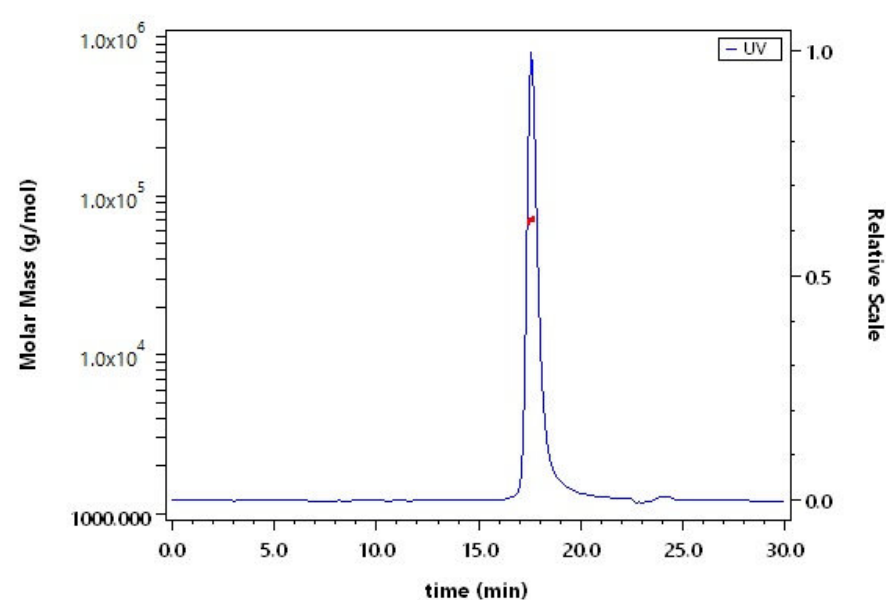
- [QMS\(ISO, GMP\)](#)
- [Quality Advantages](#)
- [Quality Control Process](#)

SDS-PAGE



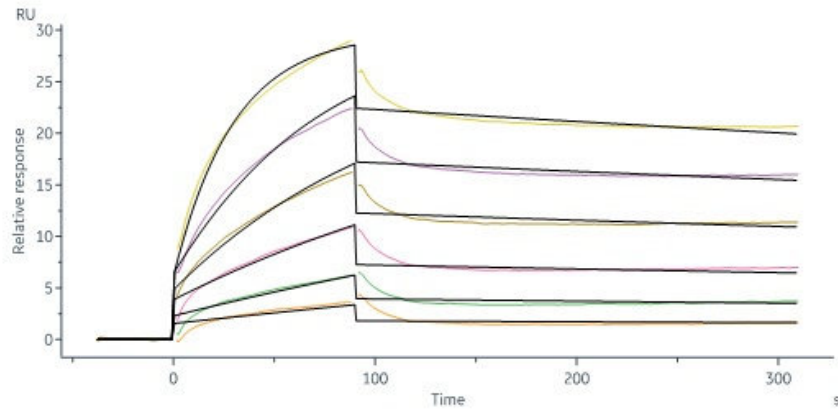
Human CXCL2, Fc Tag on SDS-PAGE under reducing (R) condition. The gel was stained with Coomassie Blue. The purity of the protein is greater than

SEC-MALS



The purity of Human CXCL2, Fc Tag (Cat. No. CX2-H5253) is more than 90% and the molecular weight of this protein is around 60-75 kDa verified by SEC-

Bioactivity-SPR



Human CXCR2 Protein, Flag,His Tag (Cat. No. CX2-H55D3) immobilized on CM5 Chip can bind Human CXCL2, Fc Tag (Cat. No. CX2-H5253) with an affinity constant of 8.12 nM as determined in a SPR assay (in presence of DDM and CHS) (Biacore 8K) (QC tested).

Background

Chemokine (C-X-C motif) ligand 2 (CXCL2) is a small cytokine belonging to the CXC chemokine family that is also called macrophage inflammatory protein 2-alpha (MIP2-alpha), Growth-regulated protein beta (Gro-beta) and Gro oncogene-2 (Gro-2). CXCL2 is 90% identical in amino acid sequence as a related chemokine, CXCL1. This chemokine is secreted by monocytes and macrophages and is chemotactic for polymorphonuclear leukocytes and hematopoietic stem cells. CXCL2 mobilizes cells by interacting with a cell surface chemokine receptor called CXCR2. CXCL2, like related chemokines, is also a powerful neutrophil chemoattractant and is involved in many immune responses including wound healing, cancer metastasis, and angiogenesis.



www.acrobiosystems.com