

Human CXCL2 Protein, His Tag

Catalog # CX2-H52H3



BIOSYSTEMS
Acro

Synonym

C-X-C motif chemokine 2, Growth-regulated protein beta, Gro-beta, Macrophage inflammatory protein 2-alpha, MIP2-alpha, GRO2, GROB, MIP2A, SCYB2

Source

Human CXCL2 Protein, His Tag (CX2-H52H3) is expressed from human 293 cells (HEK293). It contains AA Ala 35 - Asn 107 (Accession # [P19875-1](#)).

Predicted N-terminus: Gly

Molecular Characterization

CXCL2(Ala 35 - Asn 107)
P19875-1

Poly-his

This protein carries a polyhistidine tag at the C-terminus.

The protein has a calculated MW of 9.9 kDa. The protein migrates as 11-12 kDa when calibrated against [Star Ribbon Pre-stained Protein Marker](#) under reducing (R) condition (SDS-PAGE) due to glycosylation.

Endotoxin

Less than 1.0 EU per µg by the LAL method / rFC method.

Purity

>90% as determined by SDS-PAGE.

Formulation

Lyophilized from 0.22 µm filtered solution in PBS, pH7.4 with trehalose as protectant.

Contact us for customized product form or formulation.

Reconstitution

Please see Certificate of Analysis for specific instructions.

For best performance, we strongly recommend you to follow the reconstitution protocol provided in the CoA.

Storage

For long term storage, the product should be stored at lyophilized state at -20°C or lower.

Please avoid repeated freeze-thaw cycles.

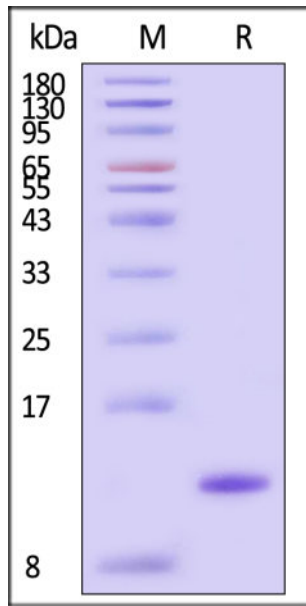
This product is stable after storage at:

- -20°C to -70°C for 12 months in lyophilized state;
- -70°C for 3 months under sterile conditions after reconstitution.

ACRO Quality Management System

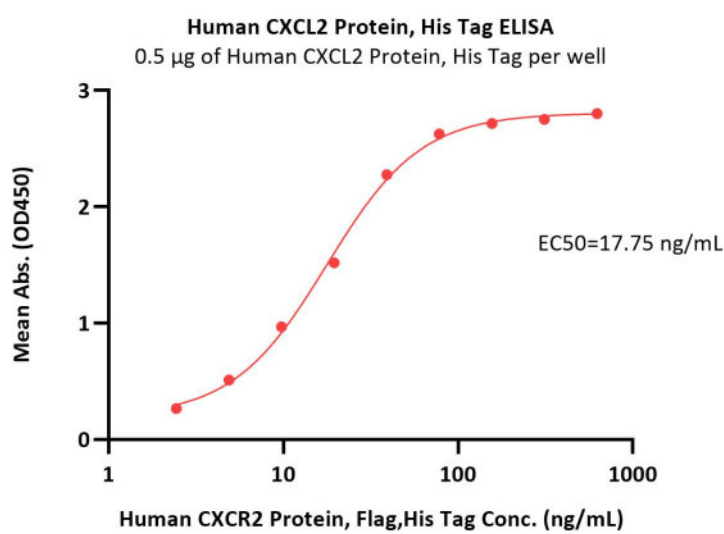
- [QMS\(ISO, GMP\)](#)
- [Quality Advantages](#)
- [Quality Control Process](#)

SDS-PAGE



Human CXCL2 Protein, His Tag on SDS-PAGE under reducing (R) condition. The gel was stained with Coomassie Blue. The purity of the protein is greater than 90% (With [Star Ribbon Pre-stained Protein Marker](#)).

Bioactivity-ELISA



Immobilized Human CXCL2 Protein, His Tag (Cat. No. CX2-H52H3) at 5 µg/mL (100 µL/well) can bind Human CXCR2 Protein, Flag,His Tag (Cat. No. CX2-H55D3) with a linear range of 2-39 ng/mL (QC tested).

Background

Chemokine (C-X-C motif) ligand 2 (CXCL2) is a small cytokine belonging to the CXC chemokine family. It is also known as macrophage inflammatory protein 2-alpha (MIP2-alpha), growth-regulated protein beta (GRO-β), and GRO oncogene-2 (GRO-2). CXCL2 is 90% identical in amino acid sequence to a related chemokine, CXCL1. This chemokine is secreted by monocytes and macrophages and is chemotactic for polymorphonuclear leukocytes and hematopoietic stem cells. CXCL2 mobilizes cells via interaction with a cell surface chemokine receptor called CXCR2. Like related chemokines, CXCL2 is also a powerful neutrophil chemoattractant and is involved in many immune processes, including wound healing, cancer metastasis, and angiogenesis.

Discounts, Gifts,
and more!



www.acrobiosystems.com

