

Human DLL3 (27-215) Protein, Fc Tag (MALS verified)

Catalog # DL3-H525c



BIOSYSTEMS
Acro

Surprise Inside!

Synonym

Delta3, delta-like 3 (Drosophila), delta-like protein 3, DLL3, Pudgy, SCDO1, SCDO1delta3

Source

Human DLL3 (27-215) Protein, Fc Tag (DL3-H525c) is expressed from human 293 cells (HEK293). It contains AA Ala 27 - Glu 215 (Accession # [Q9NYJ7](#)).

Predicted N-terminus: Ala 27

Molecular Characterization

DLL3(Ala 27 - Glu 215) Q9NYJ7	Fc(Pro 100 - Lys 330) P01857-1
----------------------------------	-----------------------------------

This protein carries a human IgG1 Fc tag at the C-terminus.

The protein has a calculated MW of 46.7 kDa. The protein migrates as 50-55 kDa when calibrated against [Star Ribbon Pre-stained Protein Marker](#) under reducing (R) condition (SDS-PAGE) due to glycosylation.

Endotoxin

Less than 1.0 EU per µg by the LAL method / rFC method.

Purity

>90% as determined by SDS-PAGE.

>90% as determined by SEC-MALS.

Formulation

Lyophilized from 0.22 µm filtered solution in PBS, 0.2 M Arginine, pH7.4 with trehalose as protectant.

Contact us for customized product form or formulation.

Reconstitution

Please see Certificate of Analysis for specific instructions.

For best performance, we strongly recommend you to follow the reconstitution protocol provided in the CoA.

Storage

For long term storage, the product should be stored at lyophilized state at -20°C or lower.

Please avoid repeated freeze-thaw cycles.

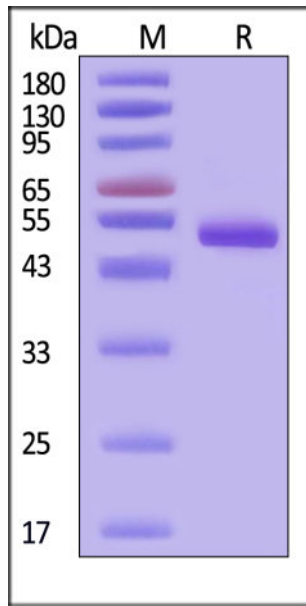
This product is stable after storage at:

- -20°C to -70°C for 12 months in lyophilized state;
- -70°C for 3 months under sterile conditions after reconstitution.

ACRO Quality Management System

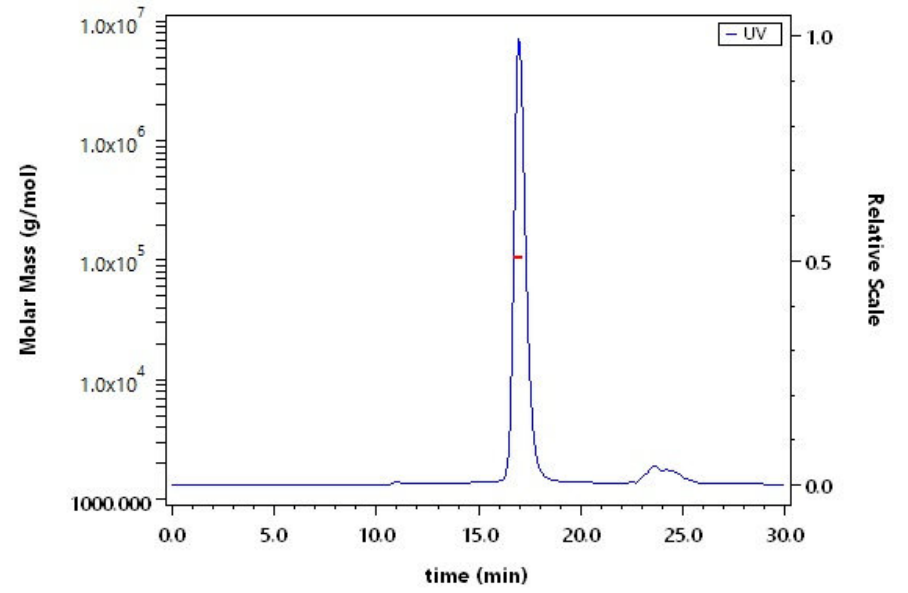
- [QMS\(ISO, GMP\)](#)
- [Quality Advantages](#)
- [Quality Control Process](#)

SDS-PAGE



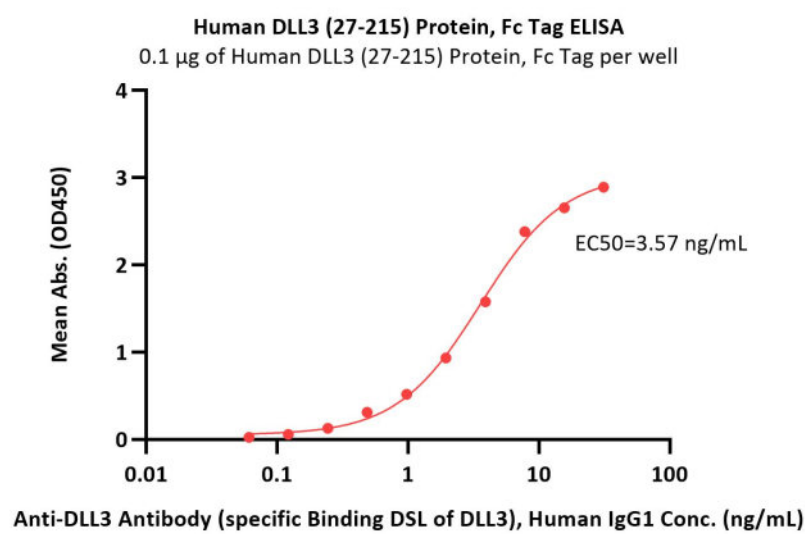
Human DLL3 (27-215) Protein, Fc Tag on SDS-PAGE under reducing (R) condition. The gel was stained with Coomassie Blue. The purity of the protein is greater than 90% (With [Star Ribbon Pre-stained Protein Marker](#)).

SEC-MALS



The purity of Human DLL3 (27-215) Protein, Fc Tag (Cat. No. DL3-H525c) is more than 90% and the molecular weight of this protein is around 95-120 kDa verified by SEC-MALS.

Bioactivity-ELISA



Immobilized Human DLL3 (27-215) Protein, Fc Tag (Cat. No. DL3-H525c) at 1 µg/mL (100 µL/well) can bind Anti-DLL3 Antibody (specific Binding DSL of DLL3), Human IgG1 with a linear range of 0.06-8 ng/mL (QC tested).

Background

Delta-like protein 3 (DLL3) is a transmembrane protein that belongs to the Delta/Serrate/Lag-2 (DSL) family of Notch ligands. May be required to divert neurons along a specific differentiation pathway. Plays a role in the formation of somite boundaries during segmentation of the paraxial mesoderm. DLL3 protein is expressed on the surface of tumor cells but not in normal adult tissues.

Discounts, Gifts,
and more!



www.acrobiosystems.com

