

Mouse GLP2R Protein, His Tag (HPLC verified)

Catalog # GLR-M52H3



BIOSYSTEMS
Acro

Synonym

GLP2R

Source

Mouse GLP2R Protein, His Tag (GLR-M52H3) is expressed from human 293 cells (HEK293). It contains AA Met 1 - Thr 135 (Accession # [Q5IXF8](#)).

Predicted N-terminus: Met 1

Molecular Characterization

GLP2R(Met 1 - Thr 135)
Q5IXF8

Poly-his

This protein carries a polyhistidine tag at the C-terminus.

The protein has a calculated MW of 17.5 kDa. The protein migrates as 28-33 kDa and 25-65 kDa when calibrated against [Star Ribbon Pre-stained Protein Marker](#) under reducing (R) condition (SDS-PAGE) due to glycosylation.

Endotoxin

Less than 1.0 EU per µg by the LAL method / rFC method.

Purity

>90% as determined by SDS-PAGE.

>95% as determined by SEC-HPLC.

Formulation

Lyophilized from 0.22 µm filtered solution in PBS, pH7.4 with trehalose as protectant.

Contact us for customized product form or formulation.

Reconstitution

Please see Certificate of Analysis for specific instructions.

For best performance, we strongly recommend you to follow the reconstitution protocol provided in the CoA.

Storage

For long term storage, the product should be stored at lyophilized state at -20°C or lower.

Please avoid repeated freeze-thaw cycles.

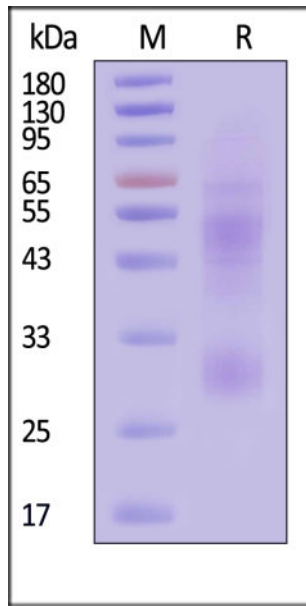
This product is stable after storage at:

- -20°C to -70°C for 12 months in lyophilized state;
- -70°C for 3 months under sterile conditions after reconstitution.

ACRO Quality Management System

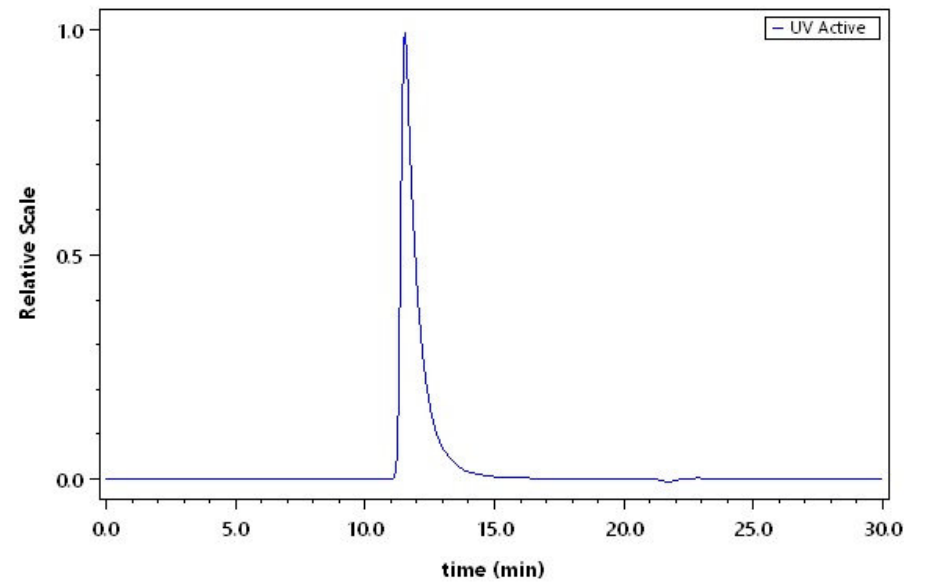
- [QMS\(ISO, GMP\)](#)
- [Quality Advantages](#)
- [Quality Control Process](#)

SDS-PAGE



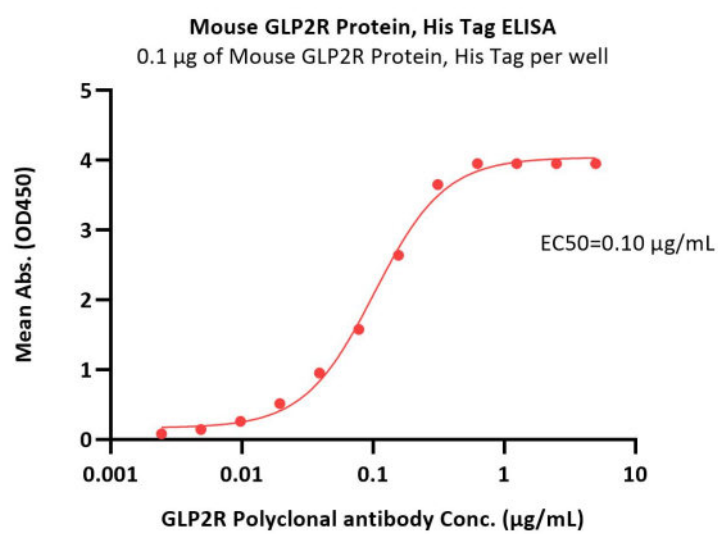
Mouse GLP2R Protein, His Tag on SDS-PAGE under reducing (R) condition. The gel was stained with Coomassie Blue. The purity of the protein is greater than 90% (With [Star Ribbon Pre-stained Protein Marker](#)).

SEC-HPLC



The purity of Mouse GLP2R Protein, His Tag (Cat. No. GLR-M52H3) was greater than 95% as determined by SEC-HPLC.

Bioactivity-ELISA



Immobilized Mouse GLP2R Protein, His Tag (Cat. No. GLR-M52H3) at 1 µg/mL (100 µL/well) can bind GLP2R Polyclonal antibody with a linear range of 0.002-0.313 µg/mL (QC tested).

Background

This gene encodes a G protein-coupled receptor that is closely related to the glucagon receptor and binds to glucagon-like peptide-2 (GLP2). Signalling through GLP2 stimulates intestinal growth and increases villus height in the small intestine, concomitant with increased crypt cell proliferation and decreased enterocyte apoptosis. [provided by RefSeq, Dec 2014]

Discounts, Gifts,
and more!



www.acrobiosystems.com

