

# Cynomolgus GPRC5D Protein, Flag,His Tag (Detergent) (SPR verified)

Catalog # GPD-C52D3



BIOSYSTEMS  
**Acro**

## Application

- Immunization
- Affinity testing (SPR / BLI)
- Screening (ELISA)

## Synonym

GPRC5D, G-protein coupled receptor family C group 5 member D

## Source

Detergent Cynomolgus GPRC5D, Flag,His Tag (GPD-C52D3) is expressed from human 293 cells (HEK293). It contains AA Tyr 2 - Phe 192 & Glu 197 - Leu 262 (Accession # [A0A2K5W6I7-1](#)).

Predicted N-terminus: Asp

## Molecular Characterization

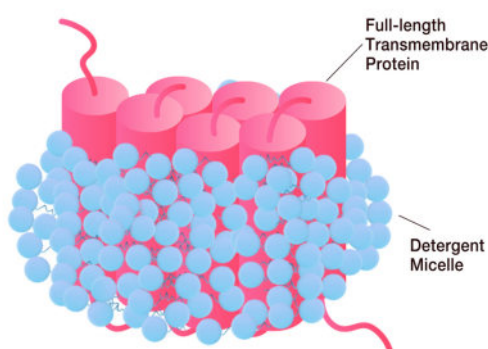


This protein carries a flag tag at the N-terminus and a polyhistidine tag at the C-terminus.

The protein has a calculated MW of 51.9 kDa. The protein migrates as 35-40 kDa under reducing (R) condition (SDS-PAGE).

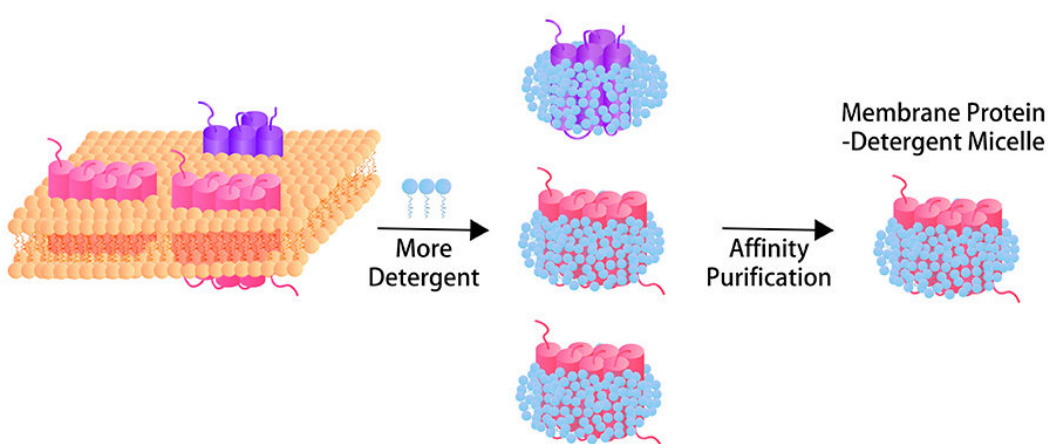
\*The DDM/CHS buffer (Cat. No. [DC-11](#)) is sold separately and not included in protein, you can follow [the link](#) for product information.

### • Structure



Each full-length transmembrane protein is encapsulated by detergent micelle.

### • Synthesis Process



Through **mild detergent micelle extraction**, dedicated solubilization, and stringent affinity purification, we maximally retain the native transmembrane conformation of full-length transmembrane proteins throughout downstream purification. This workflow yields purified, detergent-solubilized proteins free of unrelated membrane impurities and exogenous scaffold proteins, with **exceptional purity, accurate quantitation**, and well-preserved biological activity—ideal for immunization, binding assays in antibody discovery and screening (ELISA) and affinity testing (SPR and BLI), etc.

## Endotoxin

Less than 1.0 EU per  $\mu\text{g}$  by the LAL method / rFC method.

## Purity

>80% as determined by SDS-PAGE.

## Formulation

**This product is not suitable for cell based experiments due to cytotoxicity of DDM.**

**DDM and CHS are INDISPENSABLE to keep membrane protein soluble and active, under no circumstances should you remove DDM and**

## CHS.

DDM/CHS buffer (DC-11) is sold separately and not included in protein, and please contact us if you need the buffer.

If glycerol is not compatible with your application, remove glycerol just before the immediate experiment, and NEVER store glycerol-free protein solution.

Supplied as 0.2  $\mu$ m filtered solution in 50 mM HEPES, 150 mM NaCl, DDM, CHS, pH7.5 with glycerol as protectant.

Contact us for customized product form or formulation.

## Shipping

This product is supplied and shipped with dry ice, please inquire the shipping cost.

## Storage

Please avoid repeated freeze-thaw cycles.

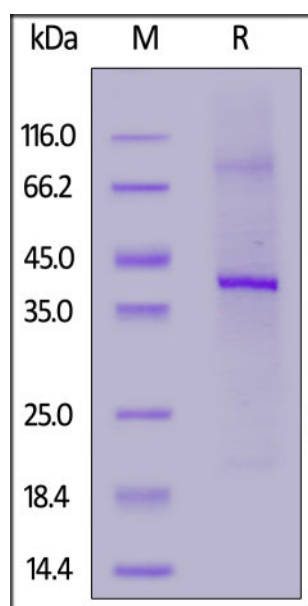
This product is stable after storage at:

- The product MUST be stored at -70°C or lower upon receipt;
- -70°C for 3 months under sterile conditions.

## ACRO Quality Management System

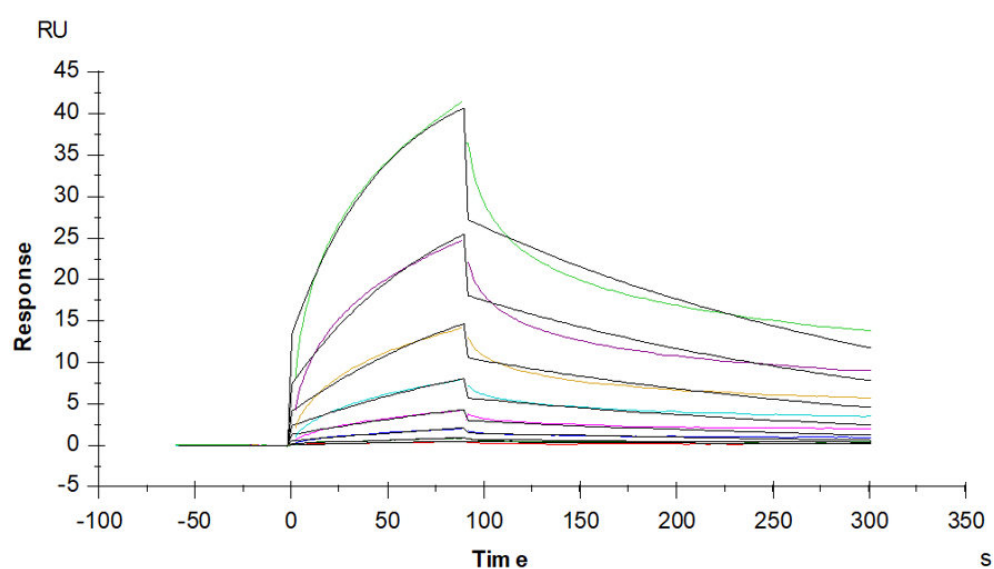
- [QMS\(ISO, GMP\)](#)
- [Quality Advantages](#)
- [Quality Control Process](#)

## SDS-PAGE



Cynomolgus GPRC5D, Flag,His Tag on SDS-PAGE under reducing (R) condition. The gel was stained with Coomassie Blue. The purity of the protein is greater than 80%.

## Bioactivity-SPR



Anti-GPRC5D Antibody immobilized on CM5 Chip can bind Cynomolgus GPRC5D, Flag,His Tag (Cat. No. GPD-C52D3) with an affinity constant of 0.122  $\mu$ M as determined in a SPR assay (Biacore T200) (QC tested).

## Background

An orphan G protein-coupled receptor with highly restricted expression in malignant plasma cells and hard keratinized tissues (hair/nail). This profile mitigates off-tumor toxicity, establishing GPRC5D as a breakthrough target for bispecific antibodies and CAR-T therapies in relapsed/refractory multiple myeloma.

Discounts, Gifts,  
and more!



[www.acrobiosystems.com](http://www.acrobiosystems.com)

6/18/2026

---