



## Background

Recombinant Monoclonal Anti-CDH17 Antibody, Rabbit (12C3) is a CDH17 primary antibody for IHC application. CDH17 is a non-classical cadherin that is mainly expressed in the fetal liver and gastrointestinal tract during embryonic development. CDH17 is effective in various gastrointestinal tumors such as liver cancer, stomach cancer, pancreatic carcinoma, and colorectal cancer.

## Key parameter

<b>Host Species</b>	Rabbit
<b>Isotype</b>	IgG
<b>Clone</b>	12C3
<b>Application</b>	IHC
<b>Property</b>	1: 500
<b>State</b>	Liquid
<b>Positive Control</b>	Human Colon Tissue
<b>Clonality</b>	Monoclonal
<b>Research Field</b>	Cancer Drug Targets
<b>Source</b>	Rabbit
<b>Synonym</b>	Cadherin 17

## Experiment Protocol

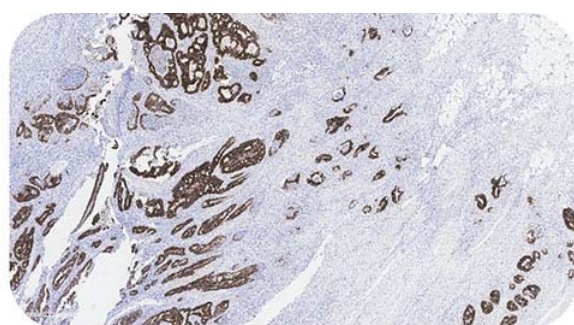
LEICA Experiment Protocol(Manual)

## Storage

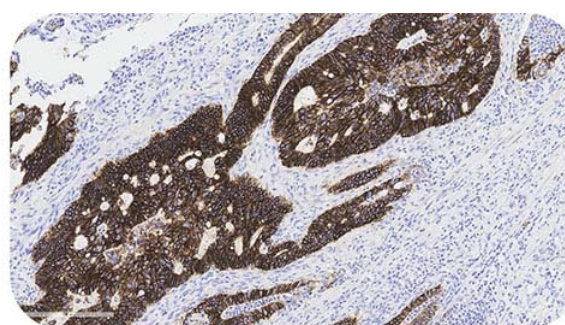
Shipped at 4°C. Store at +4°C short term (1-2 weeks). Upon delivery aliquot. Store at -20°C long term. Avoid freeze / thaw cycle. The shelf life is 30 days from the date of opening.

## Typical Data

### Control Sample



Immunohistochemistry (Formalin/PFA-fixed paraffin-embedded sections) - Recombinant Monoclonal Anti-CDH17 Antibody, Rabbit (12C3) Human Colorectal Cancer, 4X



Immunohistochemistry (Formalin/PFA-fixed paraffin-embedded sections) - Recombinant Monoclonal Anti-CDH17 Antibody, Rabbit (12C3) Human Colorectal Cancer, 20X

**Immunohistochemical analysis of paraffin embedded human colorectal cancer labelled with HGS-S595 at 1/500 dilution.**

Perform heat mediated antigen retrieval with Tris/EDTA buffer pH 9.0 before commencing with IHC staining protocol.

### Cancer Sample

Discounts, Gifts,  
and more!



# Recombinant Monoclonal Anti-CDH17 Antibody, Rabbit (12C3)

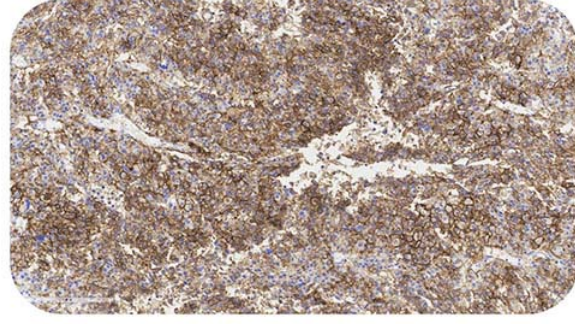
Catalog # HGS-S595



BIOSYSTEMS  
**Acro**



Immunohistochemistry (Formalin/PFA-fixed paraffin-embedded sections) - Recombinant Monoclonal Anti-CDH17 Antibody, Rabbit (12C3) Human Pancreatic Cancer, 4X



Immunohistochemistry (Formalin/PFA-fixed paraffin-embedded sections) - Recombinant Monoclonal Anti-CDH17 Antibody, Rabbit (12C3) Human Pancreatic Cancer, 20X

## Immunohistochemical analysis of paraffin embedded human pancreatic cancer labelled with HGS-S595 at 1/500 dilution.

Perform heat mediated antigen retrieval with Tris/EDTA buffer pH 9.0 before commencing with IHC staining protocol.

Discounts, Gifts,  
and more!



➤ [www.acrobiosystems.com](http://www.acrobiosystems.com)