



Background

Recombinant Monoclonal Anti-CK5/6 Antibody, Rabbit (9D2) is a CK5/6 primary antibody for IHC application. CK5/6 is routinely detected to characterize tumor types, particularly to differentiate squamous cell carcinoma from other malignancies. CK5/6 serves as a critical tumor biomarker in the clinical practice in a variety of tumors.

Key parameter

Host Species	Rabbit
Isotype	IgG
Clone	9D2
Application	IHC
Property	1: 2000
State	Liquid
Positive Control	Human Lung Tissue
Clonality	Monoclonal
Research Field	Cancer Drug Targets
Source	Rabbit
Synonym	Cytokeratin 5/6

Experiment Protocol

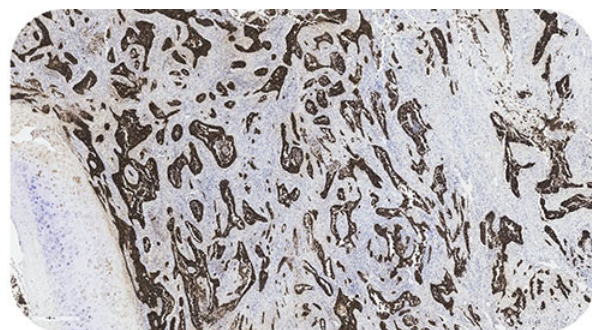
LEICA Experiment Protocol(Manual)

Storage

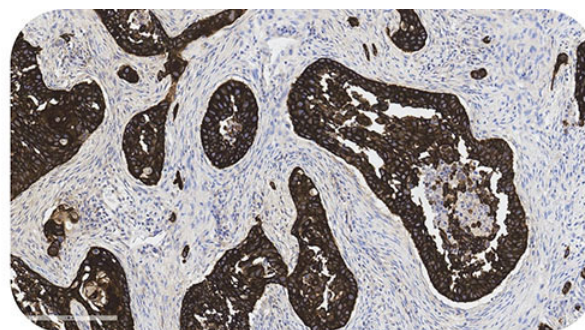
Shipped at 4°C. Store at +4°C short term (1-2 weeks). Upon delivery aliquot. Store at -20°C long term. Avoid freeze / thaw cycle. The shelf life is 30 days from the date of opening.

Typical Data

Control Sample



Immunohistochemistry (Formalin/PFA-fixed paraffin-embedded sections) - Recombinant Monoclonal Anti-CK5/6 Antibody, Rabbit (9D2) Human Lung Squamous Cell Carcinoma, 4X



Immunohistochemistry (Formalin/PFA-fixed paraffin-embedded sections) - Recombinant Monoclonal Anti-CK5/6 Antibody, Rabbit (9D2) Human Lung Squamous Cell Carcinoma, 20X

Immunohistochemical analysis of paraffin embedded human lung squamous cell carcinoma labelled with HGS-S603 at 1/2000 dilution.

Perform heat mediated antigen retrieval with Tris/EDTA buffer pH 9.0 before commencing with IHC staining protocol.

Cancer Sample

Discounts, Gifts,
and more!

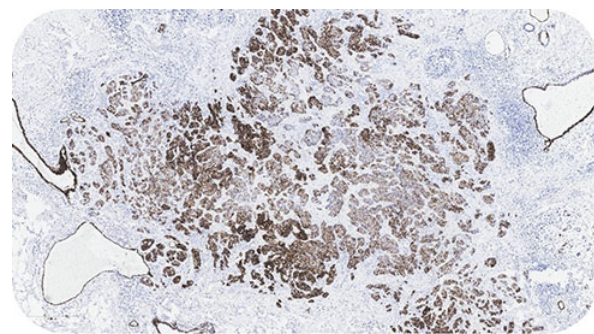


Recombinant Monoclonal Anti-CK5/6 Antibody, Rabbit (9D2)

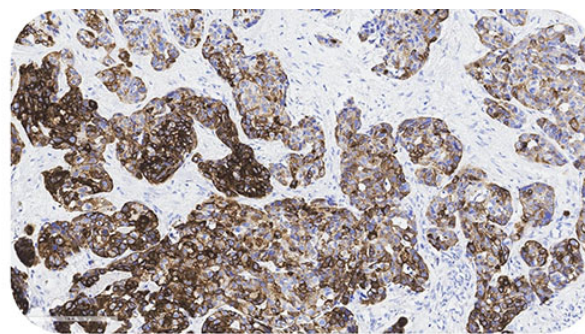
Catalog # HGS-S603



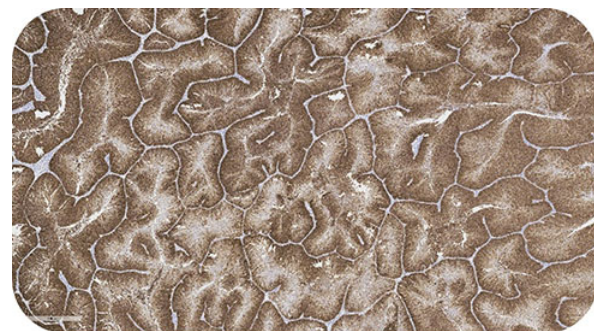
BIOSYSTEMS
Acro



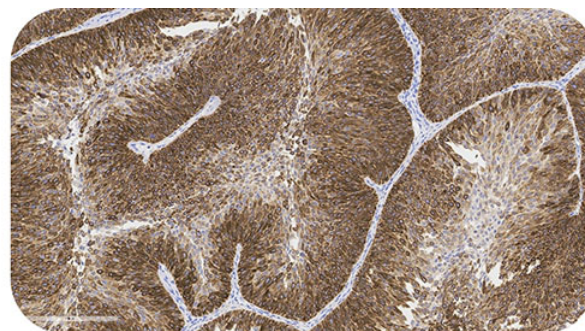
Immunohistochemistry (Formalin/PFA-fixed paraffin-embedded sections) - Recombinant Monoclonal Anti-CK5/6 Antibody, Rabbit (9D2) Human Triple-negative Breast Cancer, 4X



Immunohistochemistry (Formalin/PFA-fixed paraffin-embedded sections) - Recombinant Monoclonal Anti-CK5/6 Antibody, Rabbit (9D2) Human Triple-negative Breast Cancer, 20X



Immunohistochemistry (Formalin/PFA-fixed paraffin-embedded sections) - Recombinant Monoclonal Anti-CK5/6 Antibody, Rabbit (9D2) Human Urothelial Carcinoma, 4X



Immunohistochemistry (Formalin/PFA-fixed paraffin-embedded sections) - Recombinant Monoclonal Anti-CK5/6 Antibody, Rabbit (9D2) Human Urothelial Carcinoma, 20X

Immunohistochemical analysis of paraffin embedded human cancer tissue labelled with HGS-S603 at 1/2000 dilution.

Perform heat mediated antigen retrieval with Tris/EDTA buffer pH 9.0 before commencing with IHC staining protocol.

Discounts, Gifts,
and more!



www.acrobiosystems.com