



Background

Recombinant Monoclonal Anti-CK7 Antibody, Rabbit (6F1) is a CK7 primary antibody for IHC application. CK7 belongs to cytokeratin family and expressed in the adenocarcinoma in different organs. CK7 serves as a critical tumor biomarker in the clinical practice in a variety of tumors in the lung, breast, stomach and ovary.

Key parameter

Host Species	Rabbit
Isotype	IgG
Clone	6F1
Application	IHC
Property	1: 500
State	Liquid
Positive Control	Human Lung Tissue
Clonality	Monoclonal
Research Field	Cancer Drug Targets
Source	Rabbit
Synonym	Cytokeratin 7

Experiment Protocol

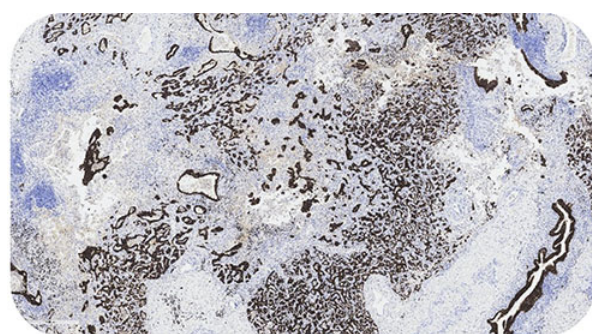
LEICA Experiment Protocol(Manual)

Storage

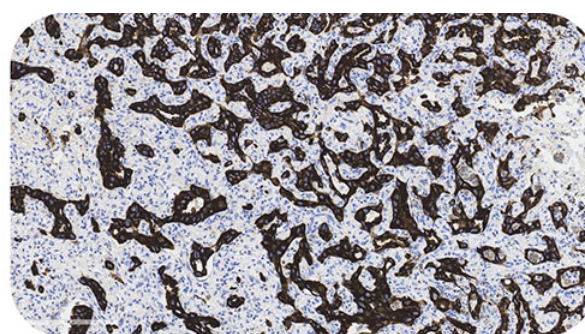
Shipped at 4°C. Store at +4°C short term (1-2 weeks). Upon delivery aliquot. Store at -20°C long term. Avoid freeze / thaw cycle. The shelf life is 30 days from the date of opening.

Typical Data

Control Sample



Immunohistochemistry (Formalin/PFA-fixed paraffin-embedded sections) - Recombinant Monoclonal Anti-CK7 Antibody, Rabbit (6F1) Human Lung Adenocarcinoma, 4X



Immunohistochemistry (Formalin/PFA-fixed paraffin-embedded sections) - Recombinant Monoclonal Anti-CK7 Antibody, Rabbit (6F1) Human Lung Adenocarcinoma, 20X

Immunohistochemical analysis of paraffin embedded human lung adenocarcinoma labelled with HGS-S604 at 1/500 dilution.

Perform heat mediated antigen retrieval with Tris/EDTA buffer pH 9.0 before commencing with IHC staining protocol.

Cancer Sample

Discounts, Gifts,
and more!

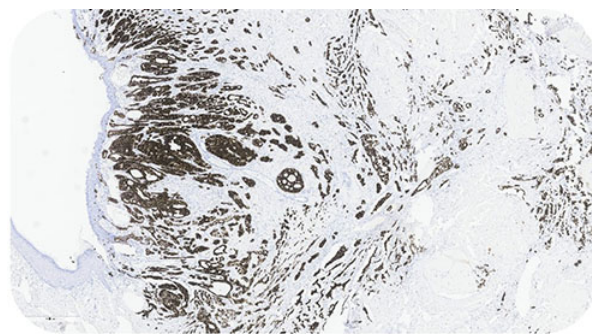


Recombinant Monoclonal Anti-CK7 Antibody, Rabbit (6F1)

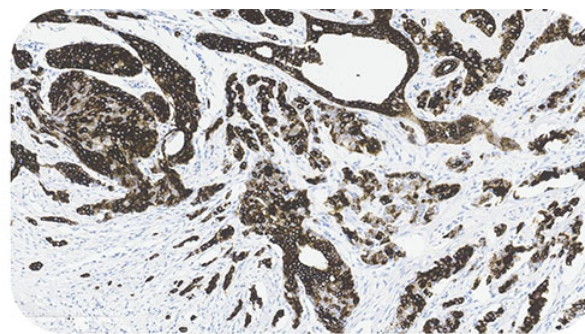
Catalog # HGS-S604



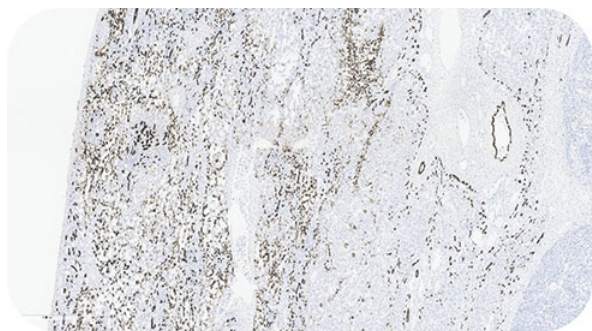
BIOSYSTEMS
Acro



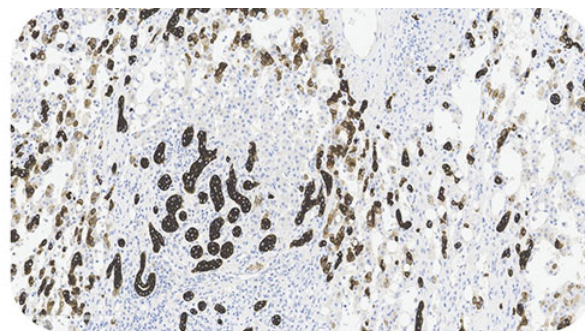
Immunohistochemistry (Formalin/PFA-fixed paraffin-embedded sections) - Recombinant Monoclonal Anti-CK7 Antibody, Rabbit (6F1) Human Breast Cancer, 4X



Immunohistochemistry (Formalin/PFA-fixed paraffin-embedded sections) - Recombinant Monoclonal Anti-CK7 Antibody, Rabbit (6F1) Human Breast Cancer, 20X



Immunohistochemistry (Formalin/PFA-fixed paraffin-embedded sections) - Recombinant Monoclonal Anti-CK7 Antibody, Rabbit (6F1) Human Pancreatic Cancer, 4X



Immunohistochemistry (Formalin/PFA-fixed paraffin-embedded sections) - Recombinant Monoclonal Anti-CK7 Antibody, Rabbit (6F1) Human Pancreatic Cancer, 20X

Immunohistochemical analysis of paraffin embedded human cancer tissue labelled with HGS-S604 at 1/500 dilution.

Perform heat mediated antigen retrieval with Tris/EDTA buffer pH 9.0 before commencing with IHC staining protocol.

Discounts, Gifts,
and more!



➤ www.acrobiosystems.com