

Unconjugated Human HLA-A*02:01 & B2M & NY-ESO-1 (SLLMWITQV) Complex Protein

(Monomer, MALS verified)

Catalog # HL1-H52T3



BIOSYSTEMS
Acro

Surprise Inside!

Synonym

HLA-A*0201 & B2M & NY-ESO-1 (SLLMWITQV)

Source

Unconjugated Human HLA-A*02:01 & B2M & NY-ESO-1 (SLLMWITQV) Complex Protein (HL1-H52T3) is expressed from human 293 cells (HEK293). It contains AA Gly 25 - Ile 308 (HLA-A*02:01) & Ile 21 - Met 119 (B2M) & SLLMWITQV peptide (Accession # [AAA59606.1](#) (HLA-A*02:01) & [P61769-1](#) (B2M) & SLLMWITQV).

Predicted N-terminus: Gly 25 & Ser

Molecular Characterization

Unconjugated Human HLA-A*02:01 & B2M & NY-ESO-1 (SLLMWITQV) Complex Protein is produced by co-expression of HLA-A*02:01 and B2M loaded with NY-ESO-1 peptide.

This protein carries a flag tag at the C-terminus, followed by an Avi tag (Avitag™), and it is not biotinylated.

The protein has a calculated MW of 35.9 kDa and 13.8 kDa. The protein migrates as 38-43 kDa and 11 kDa when calibrated against [Star Ribbon Pre-stained Protein Marker](#) under reducing (R) condition (SDS-PAGE) due to glycosylation.

Purity

>90% as determined by SDS-PAGE.

>90% as determined by SEC-MALS.

Formulation

Lyophilized from 0.22 µm filtered solution in PBS, pH7.4 with trehalose as protectant.

Contact us for customized product form or formulation.

Reconstitution

Please see Certificate of Analysis for specific instructions.

For best performance, we strongly recommend you to follow the reconstitution protocol provided in the CoA.

Storage

For long term storage, the product should be stored at lyophilized state at -20°C or lower.

Please avoid repeated freeze-thaw cycles.

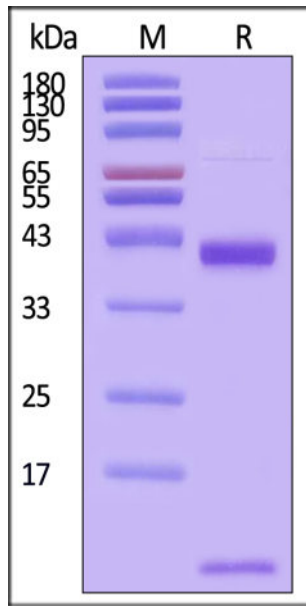
This product is stable after storage at:

- -20°C to -70°C for 12 months in lyophilized state;
- -70°C for 3 months under sterile conditions after reconstitution.

ACRO Quality Management System

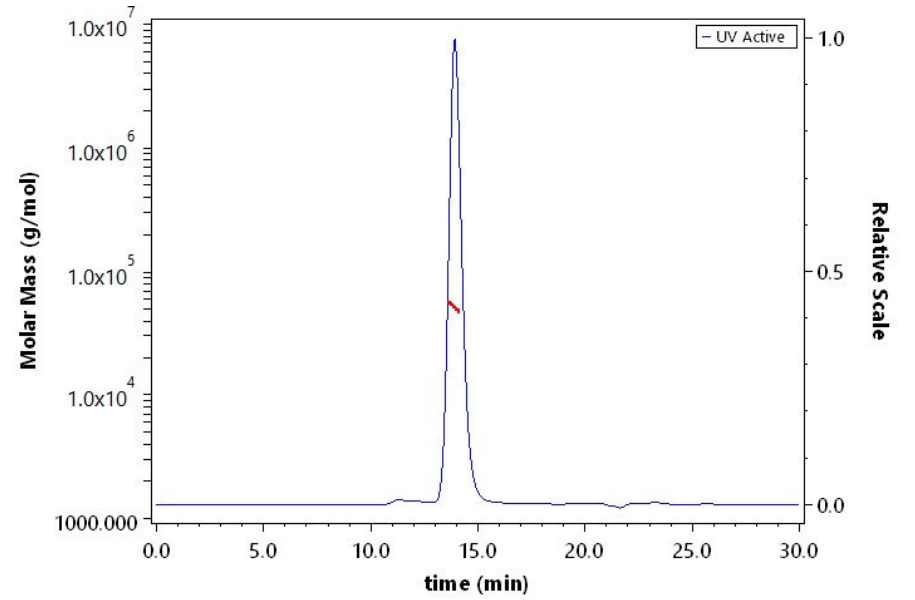
- [QMS\(ISO, GMP\)](#)
- [Quality Advantages](#)
- [Quality Control Process](#)

SDS-PAGE



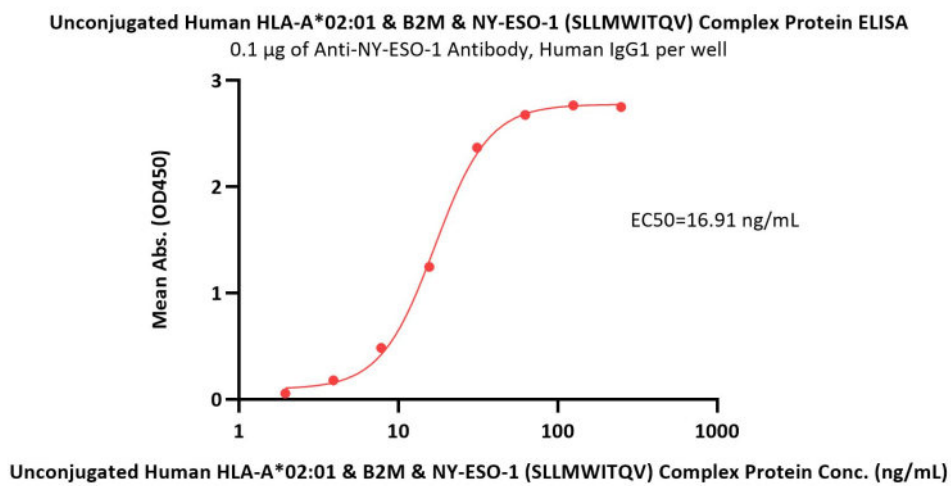
Unconjugated Human HLA-A*02:01 & B2M & NY-ESO-1 (SLLMWITQV) Complex Protein on SDS-PAGE under reducing (R) condition. The gel was stained with Coomassie Blue. The purity of the protein is greater than 90% (With [Star Ribbon Pre-stained Protein Marker](#)).

SEC-MALS



The purity of Unconjugated Human HLA-A*02:01 & B2M & NY-ESO-1 (SLLMWITQV) Complex Protein (Cat. No. HL1-H52T3) is more than 90% and the molecular weight of this protein is around 45-60 kDa verified by SEC-MALS.

Bioactivity-ELISA



Immobilized Anti-NY-ESO-1 Antibody, Human IgG1 at 1 µg/mL (100 µL/well) can bind Unconjugated Human HLA-A*02:01 & B2M & NY-ESO-1 (SLLMWITQV) Complex Protein (Cat. No. HL1-H52T3) with a linear range of 2-31 ng/mL (QC tested).

Background

NY-ESO-1, which is also well-known as New York esophageal squamous cell carcinoma 1, is an efficient target for cancer immunotherapy. This antigen is a member of cancer-testis antigens (CTAs) and is highly expressed in various cancers, including melanoma, ovarian, cervical cancer, etc. Adoptive T cell therapy with HLA-A2 restricted NY-ESO-1 transduced CD8⁺ T cells has improved the clinical response rates and overall survival of treatment-refractory melanoma patients. The Human HLA-A*0201 NY-ESO-1 (SLLMWITQV) complex protein is a complex of HLA-A*0201 of the MHC Class I, B2M and SLLMWITQV peptide of the NY-ESO-1.

Discounts, Gifts,
and more!



www.acrobiosystems.com



3/12/2026