

Cynomolgus IL-22 R alpha 1 Protein, His Tag (MALS & SPR verified)

Catalog # IL1-C52H7



BIOSYSTEMS
Acro

Surprise Inside!

Synonym

Interleukin-22 receptor subunit alpha-1, IL-22 receptor subunit alpha-1, IL-22R-alpha-1, IL-22RA1, Cytokine receptor class-II member 9, Cytokine receptor family 2 member 9, CRF2-9, ZcytoR11, IL22RA1, IL22R

Source

Cynomolgus IL-22 R alpha 1 Protein, His Tag (IL1-C52H7) is expressed from human 293 cells (HEK293). It contains AA Pro 18 - Thr 225 (Accession # [A0A2K5TKX9](#)).

Predicted N-terminus: Pro 18

Molecular Characterization

IL22RA1(Pro 18 - Thr 225)
A0A2K5TKX9 Poly-his

Other Tags and Version Biotin & Other Labeled Version

This protein carries a polyhistidine tag at the C-terminus.

The protein has a calculated MW of 25.6 kDa. The protein migrates as 33-40 kDa when calibrated against [Star Ribbon Pre-stained Protein Marker](#) under reducing (R) condition (SDS-PAGE) due to glycosylation.

Purity

>95% as determined by SDS-PAGE.

>90% as determined by SEC-MALS.

Formulation

Lyophilized from 0.22 µm filtered solution in PBS, pH7.4 with trehalose as protectant.

Contact us for customized product form or formulation.

Reconstitution

Please see Certificate of Analysis for specific instructions.

For best performance, we strongly recommend you to follow the reconstitution protocol provided in the CoA.

Storage

For long term storage, the product should be stored at lyophilized state at -20°C or lower.

Please avoid repeated freeze-thaw cycles.

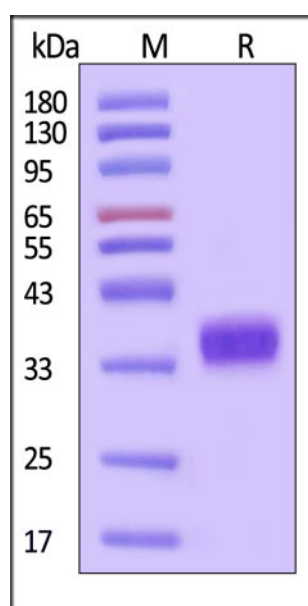
This product is stable after storage at:

- -20°C to -70°C for 12 months in lyophilized state;
- -70°C for 3 months under sterile conditions after reconstitution.

ACRO Quality Management System

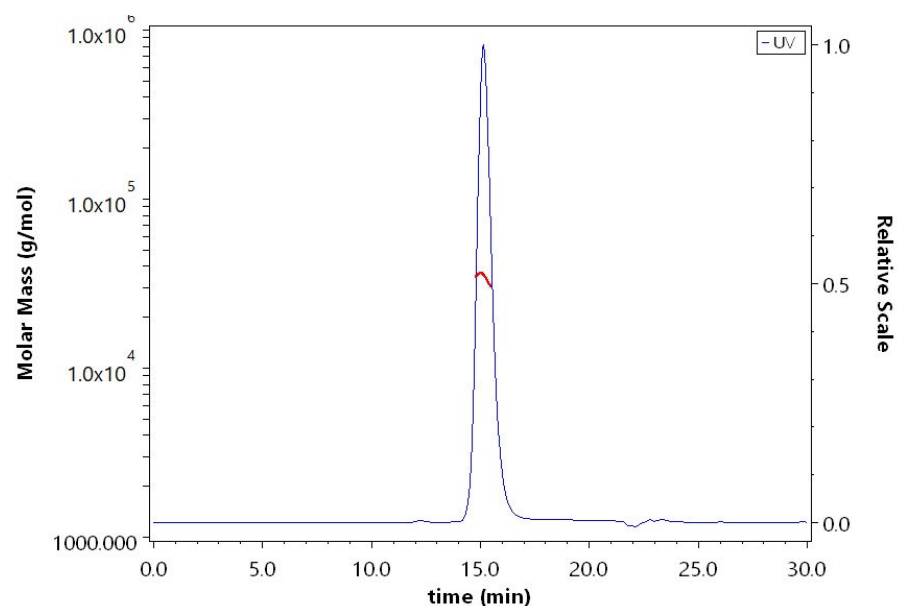
- [QMS\(ISO, GMP\)](#)
- [Quality Advantages](#)
- [Quality Control Process](#)

SDS-PAGE



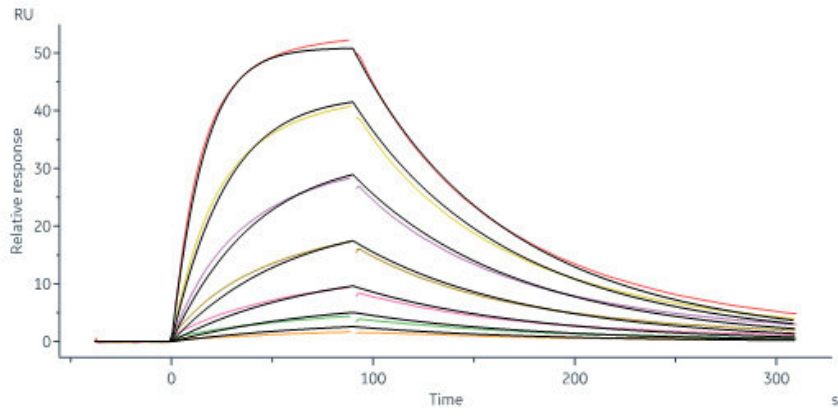
Cynomolgus IL-22 R alpha 1 Protein, His Tag on SDS-PAGE under reducing (R) condition. The gel was stained with Coomassie Blue. The purity of the protein is greater than 95% (With [Star Ribbon Pre-stained Protein Marker](#)).

SEC-MALS



The purity of Cynomolgus IL-22 R alpha 1 Protein, His Tag (Cat. No. IL1-C52H7) is more than 90% and the molecular weight of this protein is around 30-45 kDa verified by SEC-MALS.

Bioactivity-SPR



Cynomolgus IL-22 R alpha 1 Protein, His Tag (Cat. No. IL1-C52H7) immobilized on CM5 Chip can bind Cynomolgus IL-22 Protein, His Tag (Cat. No. IL2-C52H7) with an affinity constant of 58.9 nM as determined in a SPR assay (Biacore 8K) (QC tested).

Background

Interleukin-22 receptor subunit alpha-1 (IL22RA1) is a component of the receptor for IL20, IL22 and IL24. Component of IL22 receptor formed by IL22RA1 and IL10RB enabling IL22 signaling via JAK/STAT pathways. IL22 also induces activation of MAPK1/MAPK3 and Akt kinases pathways. Component of one of the receptor for IL20 and IL24 formed by IL22RA1 and IL20RB also signaling through STATs activation. Mediates IL24 antiangiogenic activity as well as IL24 inhibitory effect on endothelial cell tube formation and differentiation.

Discounts, Gifts,
and more!



www.acrobiosystems.com