

Human IL-1 Rrp2 / IL-1 R6 Protein, His Tag, low endotoxin

Catalog # IL2-H52H6



BIOSYSTEMS
Acro

Synonyms

IL-1 R6, IL-1 Rrp2, IL1RL2, IL-1RL2, IL1Rrp2, IL-1Rrp2, IL1RRP2, IL-36R

Source

Human IL-1 Rrp2, His Tag (IL2-H52H6) is expressed from human 293 cells (HEK293). It contains AA Asp 20 - Arg 335 (Accession # [Q9HB29-1](#)).

Predicted N-terminus: Asp 20

Molecular Characterization

IL-1 Rrp2(Asp 20 - Arg 335) Q9HB29-1	Poly-his
---	----------

This protein carries a polyhistidine tag at the C-terminus.

The protein has a calculated MW of 37.8 kDa. The protein migrates as 55-66 kDa when calibrated against [Star Ribbon Pre-stained Protein Marker](#) under reducing (R) condition (SDS-PAGE) due to glycosylation.

Endotoxin

Less than 0.01 EU per µg by the LAL method / rFC method.

Purity

>90% as determined by SDS-PAGE.

Formulation

Lyophilized from 0.22 µm filtered solution in PBS, pH7.4 with trehalose as protectant.

Contact us for customized product form or formulation.

Reconstitution

Please see Certificate of Analysis for specific instructions.

For best performance, we strongly recommend you to follow the reconstitution protocol provided in the CoA.

Shipping and Storage

This product is shipped at ambient temperature.

For long term storage, the product should be stored at lyophilized state at -20°C or lower.

Please avoid repeated freeze-thaw cycles.

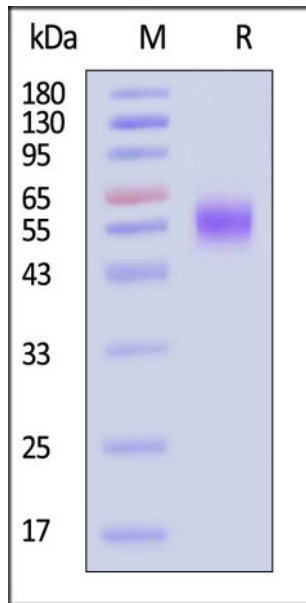
This product is stable after storage at:

- -20°C to -70°C for 12 months in lyophilized state;
- -70°C for 3 months under sterile conditions after reconstitution.

ACRO Quality Management System

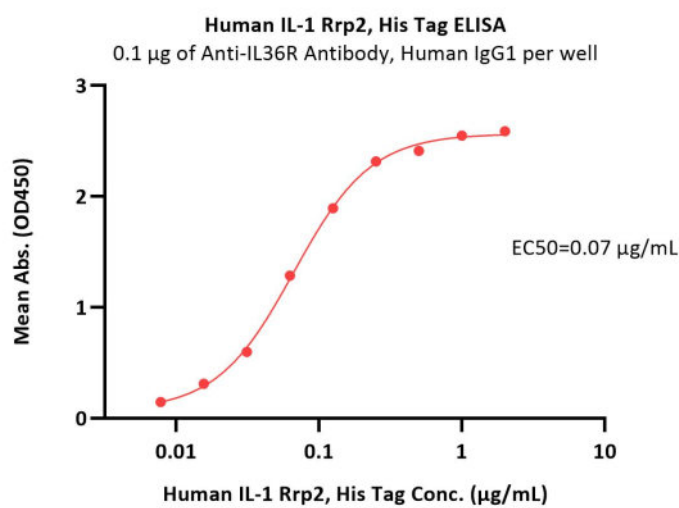
- [QMS\(ISO, GMP\)](#)
- [Quality Advantages](#)
- [Quality Control Process](#)

SDS-PAGE



Human IL-1 Rrp2, His Tag on SDS-PAGE under reducing (R) condition. The gel was stained with Coomassie Blue. The purity of the protein is greater than 90% (With [Star Ribbon Pre-stained Protein Marker](#)).

Bioactivity-ELISA



Immobilized Anti-IL36R Antibody, Human IgG1 at 1 µg/mL (100 µL/well) can bind Human IL-1 Rrp2, His Tag (Cat. No. IL2-H52H6) with a linear range of 0.008-0.5 µg/mL (QC tested).

Background

The Interleukin 1 receptor family (IL-1 R) comprises at least eleven members including IL-1 RI (IL-1 R1), IL-1 RII (IL-1 R2), IL-1 RAcP (IL-1 R3), ST2 (T1/IL-1 R4), IL-18 Ra (IL-1 Rrp/IL-1 R5), IL-1 Rrp2 (IL-1 RL2/IL-1 R6), IL-18 Rb (AcPL/IL-1 R7), IL-1RAPL-1 (TIGIRR-2/IL-1 R8), and TIGIRR-1 (IL-1 R9). All family members possess three immunoglobulin (Ig)-like domains in their extracellular region. Most members also have an intracellular TIR (Toll-like receptor/IL-1 receptor signaling) domain that is also conserved in the Toll-like receptor family. Related proteins, SIGIRR (single Ig domain-containing IL-1 R-related molecule) and IL-18BP, differ from the other members by having only one Ig domain.

Discounts, Gifts,
and more!



www.acrobiosystems.com



7/7/2026