

Mouse IL-15 Protein, His Tag

Catalog # IL5-M51H3



BIOSYSTEMS
Acro

Synonym

IL-15, Interleukin-15, MGC9721

Source

Mouse IL-15 Protein, His Tag (IL5-M51H3) is expressed from *E. coli* cells. It contains AA Asn 49 - Ser 162 (Accession # [P48346](#)).

Predicted N-terminus: Met

Molecular Characterization

IL-15(Asn 49 - Ser 162)
P48346

Poly-his

This protein carries a polyhistidine tag at the C-terminus.

The protein has a calculated MW of 15.3 kDa. The protein migrates as 15 kDa when calibrated against [Star Ribbon Pre-stained Protein Marker](#) under reducing (R) condition (SDS-PAGE).

Endotoxin

Less than 1.0 EU per µg by the LAL method / rFC method.

Purity

>90% as determined by SDS-PAGE.

Formulation

Lyophilized from 0.22 µm filtered solution in 20 mM Tris, 0.5 M Arginine, 0.3 M NaCl, pH9.5 with trehalose as protectant.

Contact us for customized product form or formulation.

Reconstitution

Please see Certificate of Analysis for specific instructions.

For best performance, we strongly recommend you to follow the reconstitution protocol provided in the CoA.

Storage

For long term storage, the product should be stored at lyophilized state at -20°C or lower.

Please avoid repeated freeze-thaw cycles.

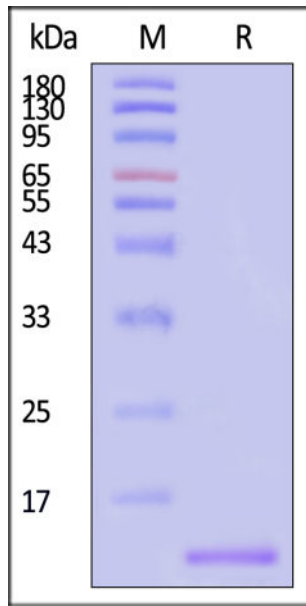
This product is stable after storage at:

- -20°C to -70°C for 12 months in lyophilized state;
- -70°C for 3 months under sterile conditions after reconstitution.

ACRO Quality Management System

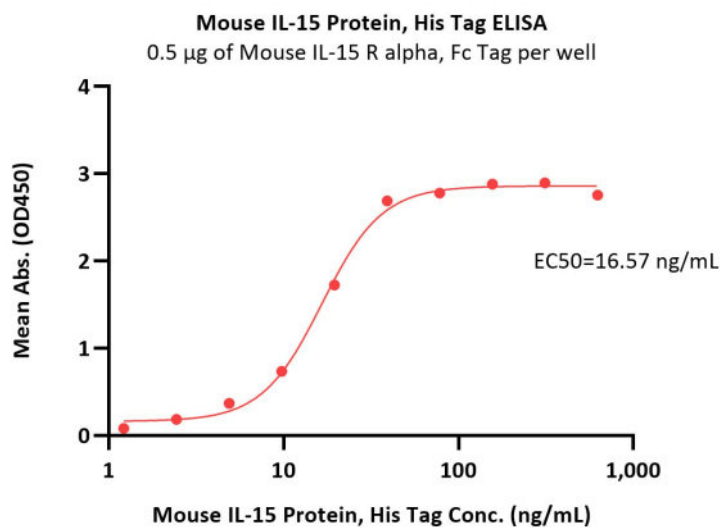
- [QMS\(ISO, GMP\)](#)
- [Quality Advantages](#)
- [Quality Control Process](#)

SDS-PAGE



Mouse IL-15 Protein, His Tag on SDS-PAGE under reducing (R) condition. The gel was stained with Coomassie Blue. The purity of the protein is greater than 90% (With [Star Ribbon Pre-stained Protein Marker](#)).

Bioactivity-ELISA



Immobilized Mouse IL-15 R alpha, Fc Tag (Cat. No. ILA-M5253) at 5 μ g/mL (100 μ L/well) can bind Mouse IL-15 Protein, His Tag (Cat. No. IL5-M51H3) with a linear range of 1-39 ng/mL (QC tested).

Background

Interleukin 15 is also known as IL15, IL-15, and is a cytokine with structural similarity to IL-2. Like IL-2, IL-15 binds to and signals through the IL-2/IL-15 beta chain (CD122) and the common gamma chain (gamma-C, CD132). IL-15 is secreted by mononuclear phagocytes (and some other cells) following infection by virus(es). This cytokine induces cell proliferation of natural killer cells; cells of the innate immune system whose principal role is to kill virally infected cells. Interleukin 15 (IL-15) regulates T and natural killer (NK) cell activation and proliferation. Survival signals that maintain memory T cells in the absence of antigen are provided by IL-15. This cytokine is also implicated in NK cell development. In rodent lymphocytes, IL-15 prevents apoptosis by inducing an apoptosis inhibitor, BCL2L1/BCL-x(L). IL-15 has been shown to enhance the anti-tumor immunity of CD8+ T cells in pre-clinical models. A phase I clinical trial to evaluate the safety, dosing, and anti-tumor efficacy of IL-15 in patients with metastatic melanoma and renal cell carcinoma (kidney cancer) has begun to enroll patients at the National Institutes of Health.

Discounts, Gifts,
and more!



www.acrobiosystems.com

