

Mouse IL-12 R beta 2 Protein, His Tag (SPR verified)

Catalog # ILB-M52H3



BIOSYSTEMS
Acro

Synonym

IL-12 R beta 2, IL12RB2, IL-12RB2, IL-12R-beta-2

Source

Mouse IL-12 R beta 2 Protein, His Tag (ILB-M52H3) is expressed from human 293 cells (HEK293). It contains AA Asn 24 - Asn 637 (Accession # [P97378](#)).

Predicted N-terminus: Asn 24

Molecular Characterization

IL-12RB2(Asn 24 - Asn 637) P97378	Poly-his
--------------------------------------	----------

This protein carries a polyhistidine tag at the C-terminus.

The protein has a calculated MW of 70.5 kDa. The protein migrates as 95-130 kDa when calibrated against [Star Ribbon Pre-stained Protein Marker](#) under reducing (R) condition (SDS-PAGE) due to glycosylation.

Purity

>90% as determined by SDS-PAGE.

Formulation

Lyophilized from 0.22 µm filtered solution in PBS, pH7.4 with trehalose as protectant.

Contact us for customized product form or formulation.

Reconstitution

Please see Certificate of Analysis for specific instructions.

For best performance, we strongly recommend you to follow the reconstitution protocol provided in the CoA.

Storage

For long term storage, the product should be stored at lyophilized state at -20°C or lower.

Please avoid repeated freeze-thaw cycles.

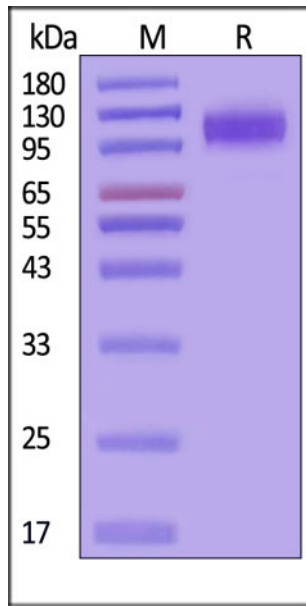
This product is stable after storage at:

- -20°C to -70°C for 12 months in lyophilized state;
- -70°C for 3 months under sterile conditions after reconstitution.

ACRO Quality Management System

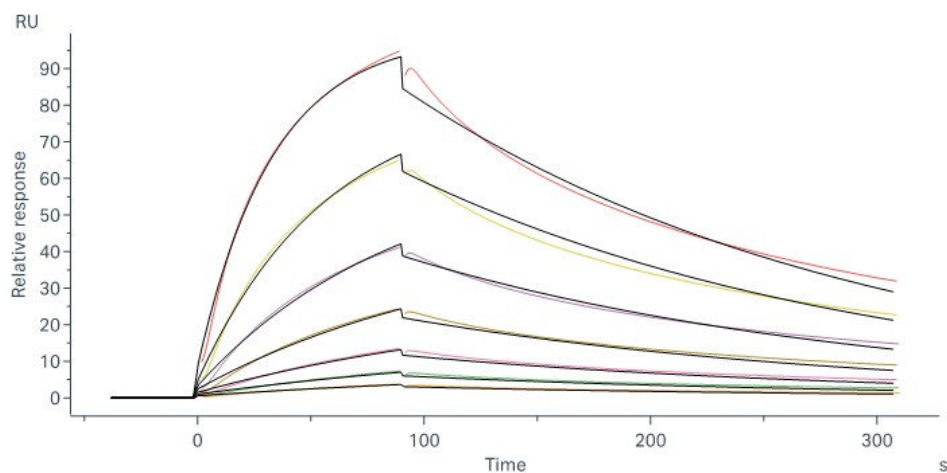
- [QMS\(ISO, GMP\)](#)
- [Quality Advantages](#)
- [Quality Control Process](#)

SDS-PAGE



Mouse IL-12 R beta 2 Protein, His Tag on SDS-PAGE under reducing (R) condition. The gel was stained with Coomassie Blue. The purity of the protein is greater than 90% (With [Star Ribbon Pre-stained Protein Marker](#)).

Bioactivity-SPR



Mouse IL-12B&IL-12A Heterodimer Protein, Tag Free&His Tag (Cat. No. IL2-M52W3) immobilized on CM5 Chip can bind Mouse IL-12 R beta 2 Protein, His Tag (Cat. No. ILB-M52H3) with an affinity constant of 971 nM as determined in a SPR assay (Biacore 8K) (QC tested).

Background

The human IL-12 R subunit is a member of the cytokine receptor superfamily and the functional high-affinity IL-12R is composed of at least two beta-type cytokine receptor subunits, each independently exhibiting a low affinity for IL-12. IL-12RB2 is the signaling component coupling to the JAK2/STAT4 pathway. Promotes the proliferation of T-cells as well as NK cells. Induces the promotion of T-cells towards the Th1 phenotype by strongly enhancing IFN-gamma production. IL-12B2 gene acts as tumor suppressor in human acute and chronic B-cell leukemias/lymphomas, IL-12R beta 2 directly restrains multiple myeloma cell growth, and targeting of IL-12 to tumor cells holds promise as new therapeutic strategy.

Discounts, Gifts,
and more!



www.acrobiosystems.com



4/23/2026