

# Rhesus macaque IL-6 R alpha / CD126 Protein, His Tag (MALS verified)

Catalog # ILR-R52H7



BIOSYSTEMS  
**Acro**

Surprise Inside!

## Synonym

IL6R, CD126, IL-6R-1, IL-6RA, IL6RA, IL-6R-alpha, IL6RQ, gp80

## Source

Rhesus macaque IL-6 R alpha Protein, His Tag (ILR-R52H7) is expressed from human 293 cells (HEK293). It contains AA Leu 20 - Pro 365 (Accession # [XP\\_001114404.2](#)).

Predicted N-terminus: Leu 20

## Molecular Characterization

IL-6 R alpha(Leu 20 - Pro 365)  
XP\_001114404.2

Poly-his

This protein carries a polyhistidine tag at the C-terminus.

The protein has a calculated MW of 40.0 kDa. The protein migrates as 55-75 kDa when calibrated against [Star Ribbon Pre-stained Protein Marker](#) under reducing (R) condition (SDS-PAGE) due to glycosylation.

## Endotoxin

Less than 1.0 EU per µg by the LAL method / rFC method.

## Purity

>95% as determined by SDS-PAGE.

>90% as determined by SEC-MALS.

## Formulation

Lyophilized from 0.22 µm filtered solution in PBS, pH7.4 with trehalose as protectant.

Contact us for customized product form or formulation.

## Reconstitution

Please see Certificate of Analysis for specific instructions.

**For best performance, we strongly recommend you to follow the reconstitution protocol provided in the CoA.**

## Storage

For long term storage, the product should be stored at lyophilized state at -20°C or lower.

**Please avoid repeated freeze-thaw cycles.**

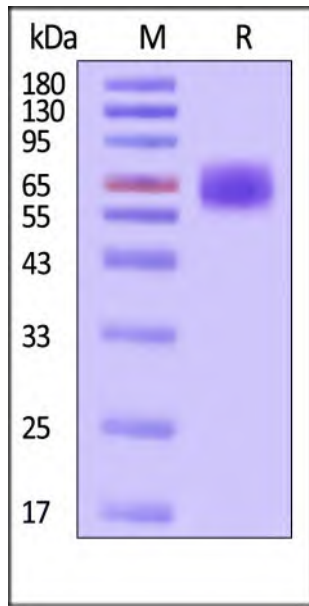
This product is stable after storage at:

- -20°C to -70°C for 12 months in lyophilized state;
- -70°C for 3 months under sterile conditions after reconstitution.

## ACRO Quality Management System

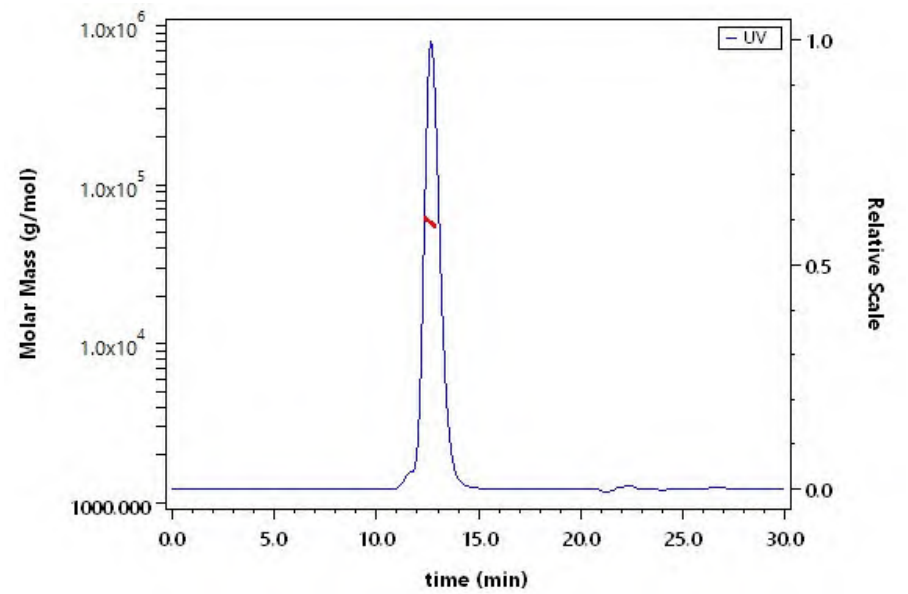
- [QMS\(ISO, GMP\)](#)
- [Quality Advantages](#)
- [Quality Control Process](#)

## SDS-PAGE



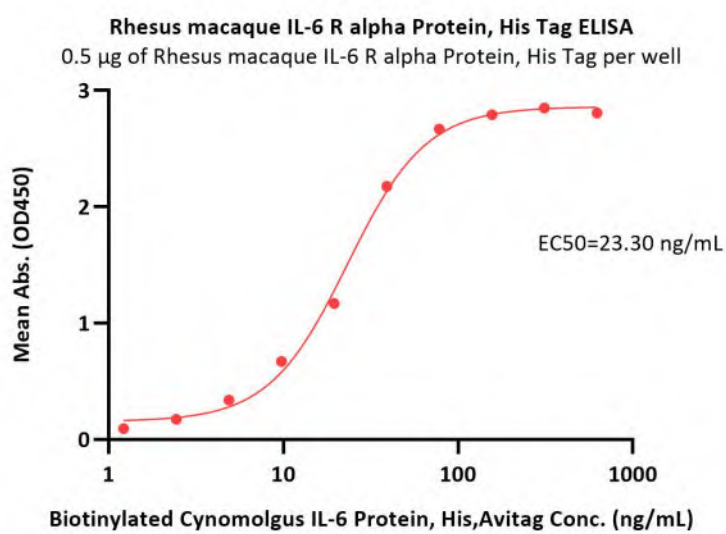
Rhesus macaque IL-6 R alpha Protein, His Tag on SDS-PAGE under reducing (R) condition. The gel was stained with Coomassie Blue. The purity of the protein is greater than 95% (With [Star Ribbon Pre-stained Protein Marker](#)).

## SEC-MALS



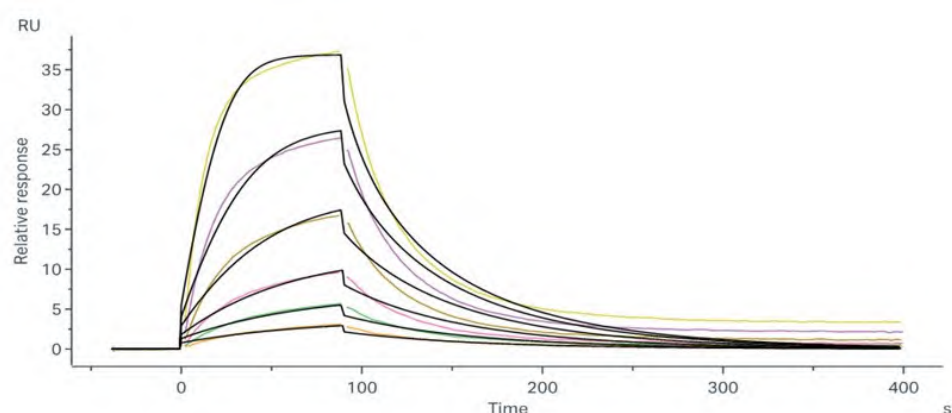
The purity of Rhesus macaque IL-6 R alpha Protein, His Tag (Cat. No. ILR-R52H7) is more than 90% and the molecular weight of this protein is around 50-70 kDa verified by SEC-MALS.

## Bioactivity-ELISA



Immobilized Rhesus macaque IL-6 R alpha Protein, His Tag (Cat. No. ILR-R52H7) at 5 µg/mL (100 µL/well) can bind Biotinylated Cynomolgus IL-6 Protein, His,Avitag (Cat. No. IL6-C82Q3) with a linear range of 1-39 ng/mL (QC tested).

## Bioactivity-SPR



Rhesus macaque IL-6 R alpha Protein, His Tag (Cat. No. ILR-R52H7) immobilized on CM5 Chip can bind Human IL-6 Protein, His Tag (Cat. No. IL6-H5243) with an affinity constant of 22.1 nM as determined in a SPR assay (Biacore 8K) (Routinely tested).

## Background

Interleukin 6 receptor (IL6R) is also known as CD126 (Cluster of Differentiation 126), is a potent pleiotropic cytokine that regulates cell growth and differentiation of various tissues, and is known particularly for its role in the immune response and acute phase reactions. IL6R is a protein complex consisting of a IL-6 receptor

subunit (IL6R) and interleukin 6 signal transducer Glycoprotein 130. IL6R also denotes the human gene encoding this subunit. Alternatively spliced transcript variants encoding distinct isoforms have been reported. IL6R subunit also shared by many other cytokines. The soluble form of IL6R arises from proteolytic cleavage of membrane-bound IL6R $\alpha$ , and acts agonistically by making the IL6 ligand accessible to the signal transducer gp130. Dysregulated production of IL6 and IL6R are implicated in the pathogenesis of several inflammatory diseases and malignancies such as multiple myeloma, rheumatoid arthritis, or osteoporosis, and it has been reported that a humanized anti-IL6R monoclonal antibody is a promising agent applicable to the therapeutic approach for IL6 driven diseases. Interleukin-6 receptor has been shown to interact with Interleukin 6 and Ciliary neurotrophic factor.

Discounts, Gifts,  
and more!



[www.acrobiosystems.com](http://www.acrobiosystems.com)



4/16/2026

---