

# Human Activin E Protein, His Tag (MALS verified)

Catalog # INE-H5143



BIOSYSTEMS  
**Acro**

## Synonym

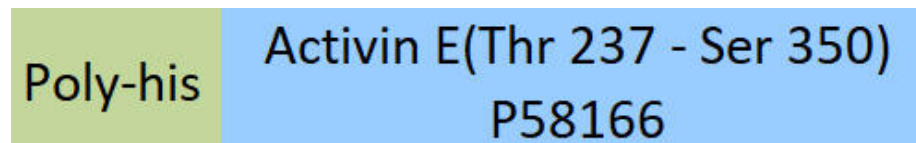
Activin E

## Source

Human Activin E Protein, His Tag (INE-H5143) is expressed from *E. coli* cells. It contains AA Thr 237 - Ser 350 (Accession # [P58166](#)).

Predicted N-terminus: Met

## Molecular Characterization



This protein carries a polyhistidine tag at the N-terminus.

The protein has a calculated MW of 14.5 kDa. The protein migrates as 15-16 kDa when calibrated against [Star Ribbon Pre-stained Protein Marker](#) under reducing (R) condition (SDS-PAGE).

## Purity

>95% as determined by SDS-PAGE.

>90% as determined by SEC-MALS.

## Formulation

Lyophilized from 0.22 µm filtered solution in 20 mM Citric acid, pH2.2 with trehalose as protectant.

Contact us for customized product form or formulation.

## Reconstitution

Please see Certificate of Analysis for specific instructions.

**For best performance, we strongly recommend you to follow the reconstitution protocol provided in the CoA.**

## Storage

For long term storage, the product should be stored at lyophilized state at -20°C or lower.

**Please avoid repeated freeze-thaw cycles.**

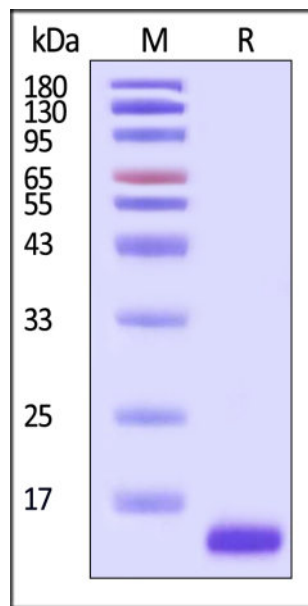
This product is stable after storage at:

- -20°C to -70°C for 12 months in lyophilized state;
- -70°C for 3 months under sterile conditions after reconstitution.

## ACRO Quality Management System

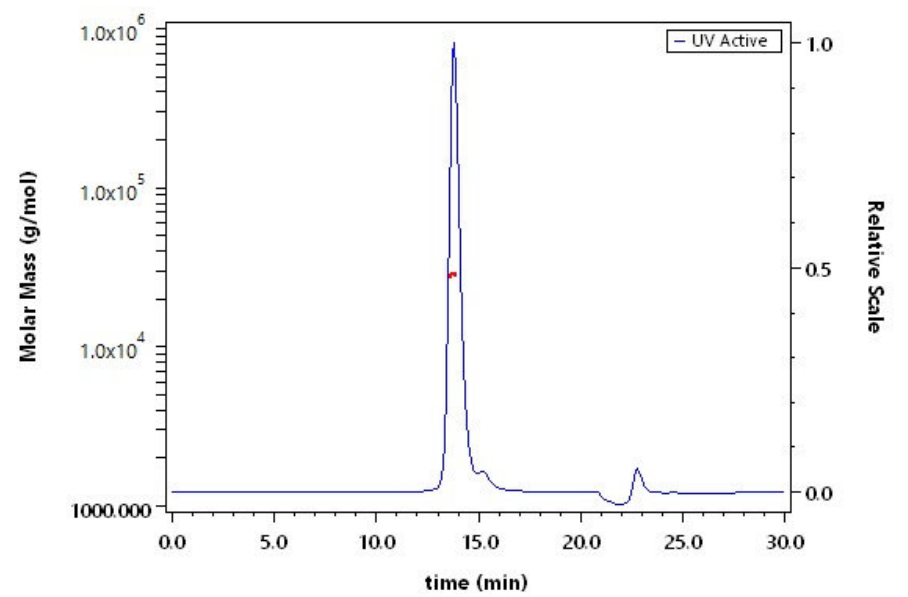
- [QMS\(ISO, GMP\)](#)
- [Quality Advantages](#)
- [Quality Control Process](#)

## SDS-PAGE



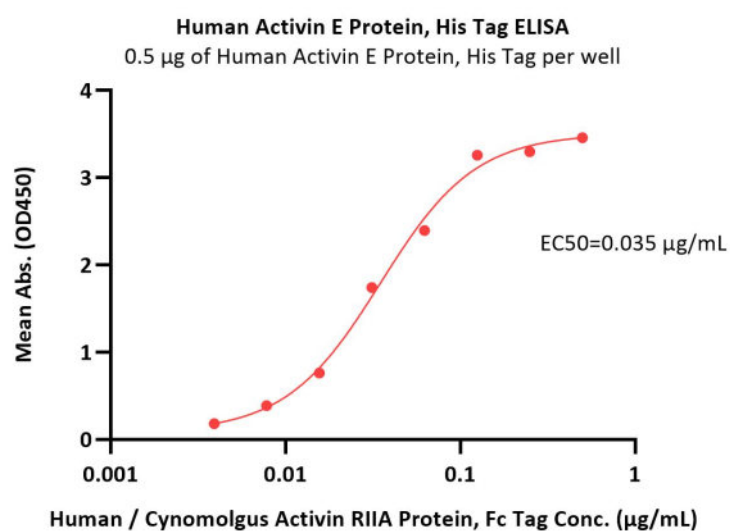
Human Activin E Protein, His Tag on SDS-PAGE under reducing (R) condition. The gel was stained with Coomassie Blue. The purity of the protein is greater than 95% (With [Star Ribbon Pre-stained Protein Marker](#)).

## SEC-MALS



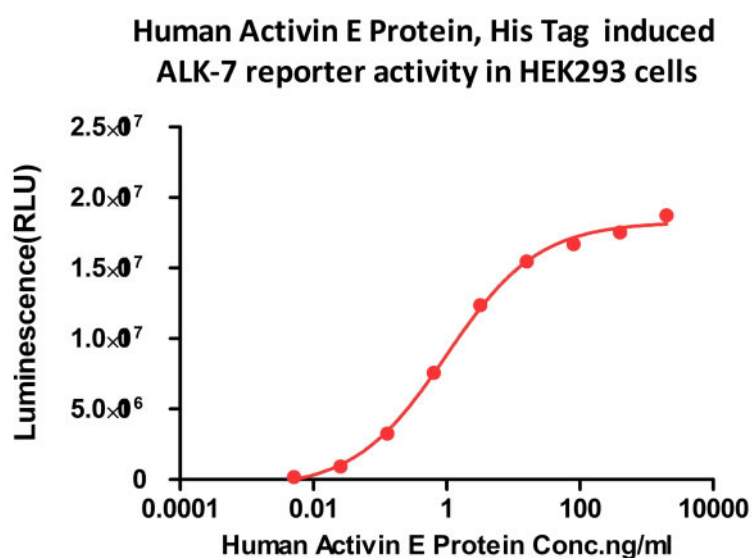
The purity of Human Activin E Protein, His Tag (Cat. No. INE-H5143) is more than 90% and the molecular weight of this protein is around 27-35 kDa verified by SEC-MALS.

## Bioactivity-ELISA



Immobilized Human Activin E Protein, His Tag (Cat. No. INE-H5143) at 5 µg/mL (100 µL/well) can bind Human / Cynomolgus Activin RIIA / ACVR2A Protein, Fc Tag (Cat. No. ACA-H5269) with a linear range of 0.004-0.06 µg/mL (QC tested).

## Bioactivity-CELL BASE



Human Activin E Protein, His Tag (Cat. No. INE-H5143) induced ALK-7 reporter activity in HEK293 cells. The EC50 for this effect is 0.9882 µg/mL (Routinely tested).

## Background

Activins are one of the three distinct subclasses within the greater Transforming growth factor  $\beta$  superfamily. The members of the activin subclass include activin A, activin B, activin C, activin E, and the more distant members myostatin and GDF-11. Activin E is a homodimer of INHBE secreted by the liver that plays a crucial role in regulating metabolic homeostasis particularly in lipid metabolism and energy homeostasis.

Discounts, Gifts,  
and more!



[www.acrobiosystems.com](http://www.acrobiosystems.com)

5/18/2026

---