

Mouse Activin E Protein, His Tag

Catalog # INE-M5143



BIOSYSTEMS
Acro

Synonym

Activin E

Source

Mouse Activin E Protein, His Tag (INE-M5143) is expressed from *E. coli* cells. It contains AA Thr 237 - Ser 350 (Accession # [O08717](#)).

Predicted N-terminus: Met

Molecular Characterization

Poly-his **Activin E(Thr 237 - Ser 350)**
008717

This protein carries a polyhistidine tag at the N-terminus.

The protein has a calculated MW of 14.5 kDa. The protein migrates as 14-15 kDa when calibrated against [Star Ribbon Pre-stained Protein Marker](#) under reducing (R) condition (SDS-PAGE).

Endotoxin

Less than 1.0 EU per µg by the LAL method / rFC method.

Purity

>90% as determined by SDS-PAGE.

Formulation

Lyophilized from 0.22 µm filtered solution in 20 mM Citric acid, pH2.2 with trehalose as protectant.

Contact us for customized product form or formulation.

Reconstitution

Please see Certificate of Analysis for specific instructions.

For best performance, we strongly recommend you to follow the reconstitution protocol provided in the CoA.

Storage

For long term storage, the product should be stored at lyophilized state at -20°C or lower.

Please avoid repeated freeze-thaw cycles.

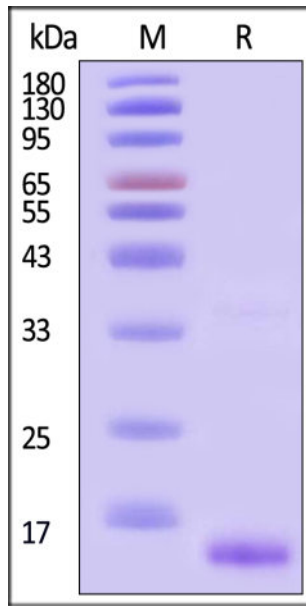
This product is stable after storage at:

- -20°C to -70°C for 12 months in lyophilized state;
- -70°C for 3 months under sterile conditions after reconstitution.

ACRO Quality Management System

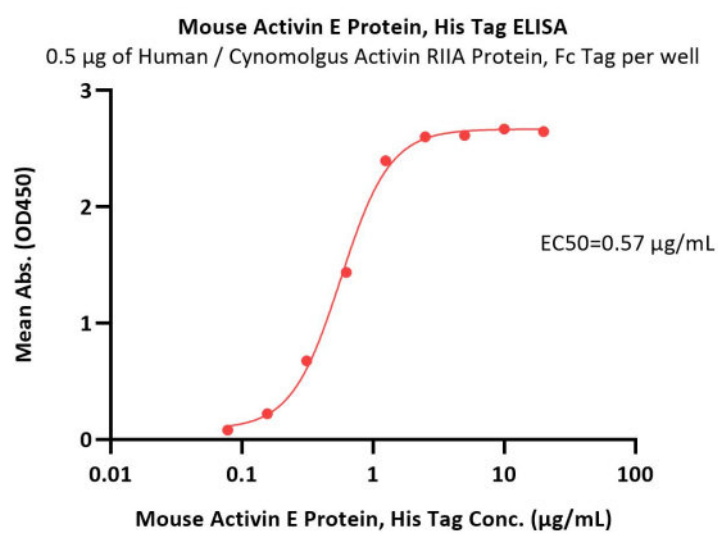
- [QMS\(ISO, GMP\)](#).
- [Quality Advantages](#)
- [Quality Control Process](#)

SDS-PAGE



Mouse Activin E Protein, His Tag on SDS-PAGE under reducing (R) condition. The gel was stained with Coomassie Blue. The purity of the protein is greater than 90% (With [Star Ribbon Pre-stained Protein Marker](#)).

Bioactivity-ELISA



Immobilized Human / Cynomolgus Activin RIIA Protein, Fc Tag (Cat. No. ACA-H5269) at 5 µg/mL (100 µL/well) can bind Mouse Activin E Protein, His Tag (Cat. No. INE-M5143) with a linear range of 0.078-1.25 µg/mL (QC tested).

Background

Activins are one of the three distinct subclasses within the greater Transforming growth factor β superfamily. The members of the activin subclass include activin A, activin B, activin C, activin E, and the more distant members myostatin and GDF-11. Activin E is a homodimer of INHBE secreted by the liver that plays a crucial role in regulating metabolic homeostasis particularly in lipid metabolism and energy homeostasis.

Discounts, Gifts,
and more!



www.acrobiosystems.com

