

# Human Kallikrein 12 Protein, His Tag (active enzyme)

Catalog # KL2-H53H3



BIOSYSTEMS  
**Acro**

Surprise Inside!

## Synonyms

Kallikrein 12

## Source

Human Kallikrein 12 Protein, His Tag (KL2-H53H3) is expressed from CHO cells. It contains AA Ala 18 - Asn 248 (Accession # [NP\\_665901](#)).

Predicted N-terminus: Ala 18

## Molecular Characterization

Kallikrein 12(Ala 18 - Asn 248)  
NP\_665901

Poly-his

This protein carries a polyhistidine tag at the C-terminus.

The protein has a calculated MW of 26.9 kDa. The protein migrates as 33-41 kDa when calibrated against [Star Ribbon Pre-stained Protein Marker](#) under reducing (R) condition (SDS-PAGE) due to glycosylation.

## Purity

>85% as determined by SDS-PAGE.

## Formulation

Supplied as 0.2 µm filtered solution in 100 mM Tris, 150 mM NaCl, pH8.0 with glycerol as protectant.

Contact us for customized product form or formulation.

## Shipping and Storage

**This product is supplied and shipped on dry ice.**

**Please avoid repeated freeze-thaw cycles.**

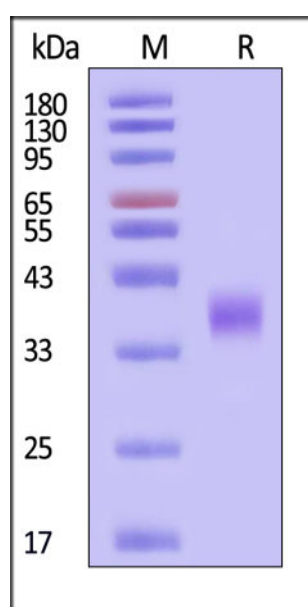
This product is stable after storage at:

- The product **MUST** be stored at -70°C or lower upon receipt;
- -70°C for 3 months under sterile conditions.

## ACRO Quality Management System

- [QMS\(ISO, GMP\)](#)
- [Quality Advantages](#)
- [Quality Control Process](#)

## SDS-PAGE



Human Kallikrein 12 Protein, His Tag on SDS-PAGE under reducing (R) condition. The gel was stained with Coomassie Blue. The purity of the protein is greater than 85% (With [Star Ribbon Pre-stained Protein Marker](#)).

## Bioactivity

Measured by its ability to cleave the fluorogenic peptide substrate Boc--VPR--AMC. The specific activity is > 8,000 pmol/min/μg (QC tested).

## Background

Kallikrein 12 (KLK12) is a member of the human tissue kallikrein-related peptidase family, located on chromosome 19q13.41. It encodes a secreted serine protease of about 261 amino acids with a molecular weight of ~30 kDa. KLK12 is expressed at high levels in the prostate and also detectable in tissues such as kidney and stomach. Functionally, KLK12 participates in extracellular matrix degradation and remodeling, influencing cell proliferation, differentiation, and signaling.

Discounts, Gifts,  
and more!



[www.acrobiosystems.com](http://www.acrobiosystems.com)



7/1/2026

---