



Synonym

LAG3,CD223,FDC

Source

Human LAG-3, Llama IgG2b Fc Tag(LA3-H525c) is expressed from human 293 cells (HEK293). It contains AA Leu 23 - Leu 450 (Accession # [P18627-1](#)).

Predicted N-terminus: Leu 23

Molecular Characterization

LAG-3(Leu 23 - Leu 450) P18627-1	LlamaFc(Glu1 - Ser243) AAX73259.1
-------------------------------------	--------------------------------------

This protein carries a llama IgG2b Fc tag at the C-terminus.

The protein has a calculated MW of 74.0 kDa. The protein migrates as 90 kDa under reducing (R) condition (SDS-PAGE) due to glycosylation.

Endotoxin

Less than 0.01 EU per µg by the LAL method / rFC method.

Purity

>95% as determined by SDS-PAGE.

>90% as determined by SEC-MALS.

Formulation

Lyophilized from 0.22 µm filtered solution in Tris with Glycine, Arginine and NaCl, pH7.5 with trehalose as protectant.

Contact us for customized product form or formulation.

Reconstitution

Please see Certificate of Analysis for specific instructions.

For best performance, we strongly recommend you to follow the reconstitution protocol provided in the CoA.

Storage

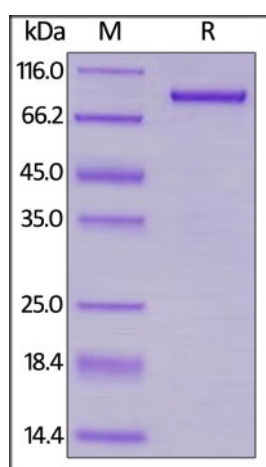
For long term storage, the product should be stored at lyophilized state at -20°C or lower.

Please avoid repeated freeze-thaw cycles.

This product is stable after storage at:

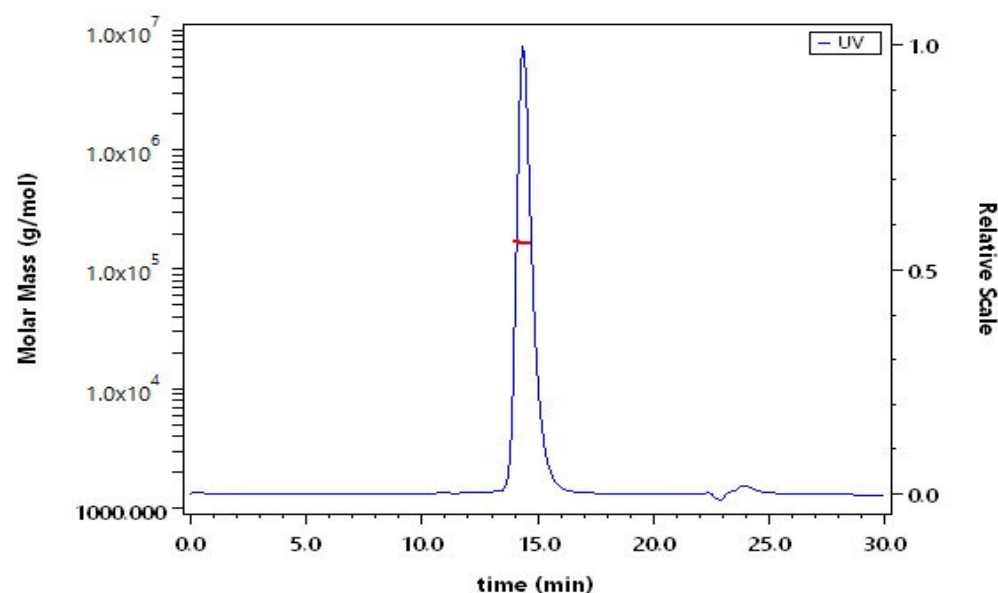
- -20°C to -70°C for 12 months in lyophilized state;
- -70°C for 3 months under sterile conditions after reconstitution.

SDS-PAGE



Human LAG-3, Llama IgG2b Fc Tag on SDS-PAGE under reducing (R) condition. The gel was stained with Coomassie Blue. The purity of the protein is greater than 95%.

SEC-MALS



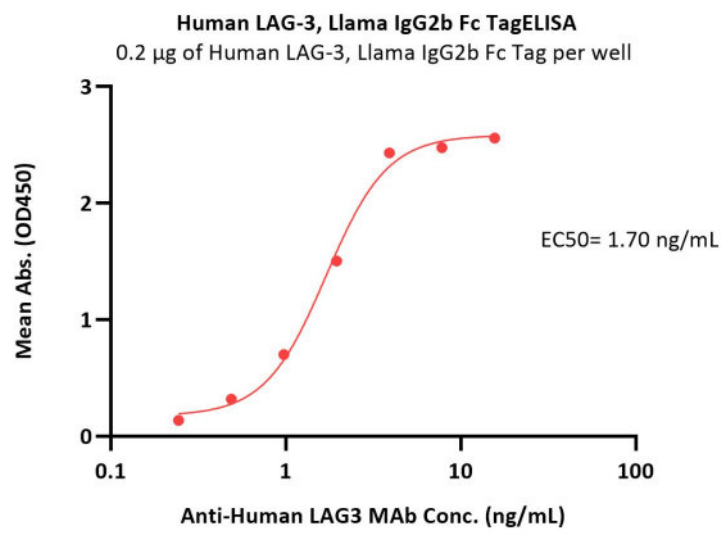
The purity of Human LAG-3, Llama IgG2b Fc Tag (Cat. No. LA3-H525c) is more than 90% and the molecular weight of this protein is around 160-190 kDa verified by SEC-MALS.

[Report](#)

Bioactivity-ELISA

Discounts, Gifts,
and more!





Immobilized Human LAG-3, Llama IgG2b Fc Tag (Cat. No. LA3-H525c) at 2 µg/mL (100 µL/well) can bind Anti-Human LAG3 MAb with a linear range of 0.2-4 ng/mL (QC tested).

Background

Lymphocyte activation gene 3 protein (LAG3) is also known as CD antigen CD223 and protein FDC, which belongs to immunoglobulin (Ig) superfamily and contains 4 extracellular Ig-like domains. The LAG3 gene contains 8 exons. The sequence data, exon/intron organization, and chromosomal localization all indicate a close relationship of LAG3 to CD4. LAG3 /CD223 involved in lymphocyte activation. LAG3 /CD223 binds to HLA class-II antigens.

Discounts, Gifts,
and more!

