

Human LILRB2 / CD85d / ILT4 Protein, His Tag, low endotoxin (MALS verified)

Catalog # LI2-H5220



BIOSYSTEMS
Acro

Synonyms

LILRB2, ILT4, LIR2, MIR10, CD85d

Source

Human LILRB2, His Tag (LI2-H5220) is expressed from human 293 cells (HEK293). It contains AA Gln 22 - Val 461 (Accession # [AAH36827](#)).

Predicted N-terminus: Gln 22

Molecular Characterization

LILRB2(Gln 22 - Val 461)
AAH36827

Poly-his

This protein carries a polyhistidine tag at the C-terminus.

The protein has a calculated MW of 48.6 kDa. The protein migrates as 58-67 kDa under reducing (R) condition (SDS-PAGE) due to glycosylation.

Endotoxin

Less than 0.01 EU per µg by the LAL method / rFC method.

Purity

>95% as determined by SDS-PAGE.

>95% as determined by SEC-MALS.

Formulation

Lyophilized from 0.22 µm filtered solution in PBS, pH7.4 with trehalose as protectant.

Contact us for customized product form or formulation.

Reconstitution

Please see Certificate of Analysis for specific instructions.

For best performance, we strongly recommend you to follow the reconstitution protocol provided in the CoA.

Shipping and Storage

This product is shipped at ambient temperature.

For long term storage, the product should be stored at lyophilized state at -20°C or lower.

Please avoid repeated freeze-thaw cycles.

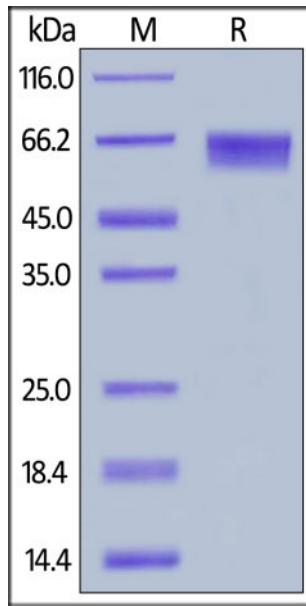
This product is stable after storage at:

- -20°C to -70°C for 12 months in lyophilized state;
- -70°C for 3 months under sterile conditions after reconstitution.

ACRO Quality Management System

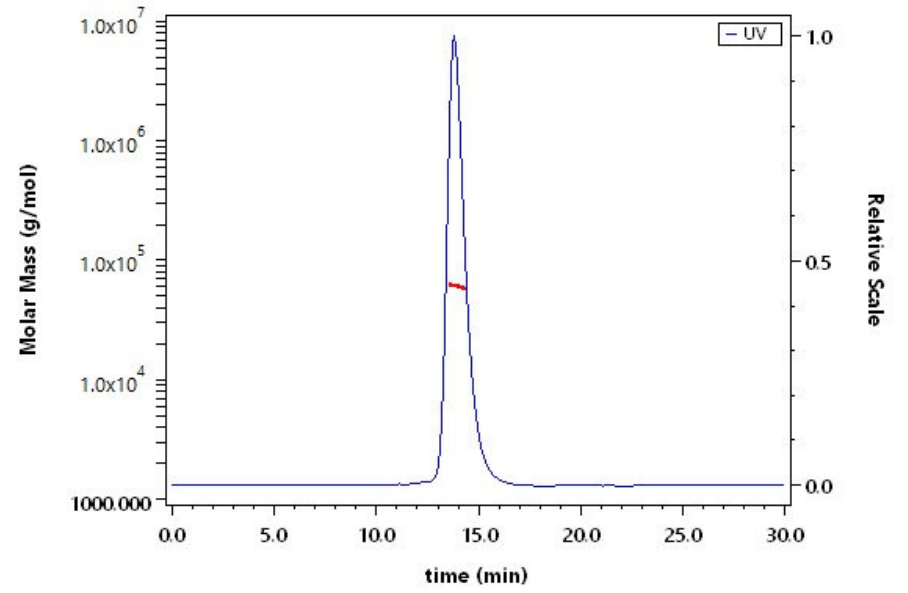
- [QMS\(ISO, GMP\)](#).
- [Quality Advantages](#)
- [Quality Control Process](#)

SDS-PAGE



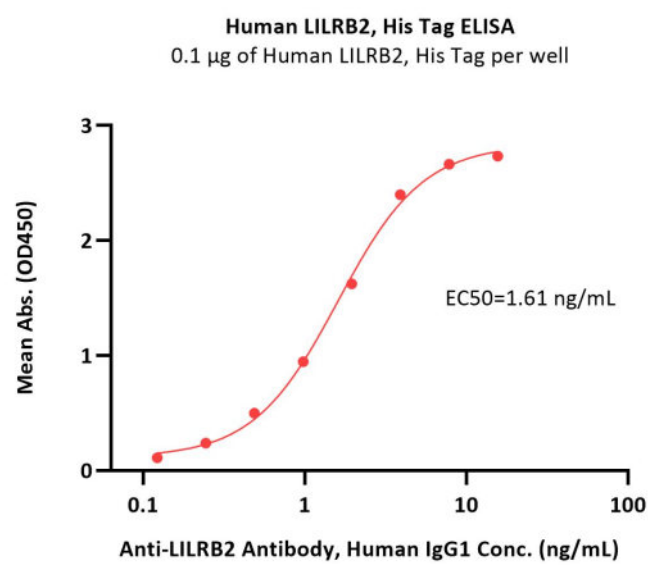
Human LILRB2, His Tag on SDS-PAGE under reducing (R) condition. The gel was stained with Coomassie Blue. The purity of the protein is greater than 95%.

SEC-MALS



The purity of Human LILRB2, His Tag (Cat. No. LI2-H5220) is more than 95% and the molecular weight of this protein is around 58-78 kDa verified by SEC-MALS.

Bioactivity-ELISA



Immobilized Human LILRB2, His Tag (Cat. No. LI2-H5220) at 1 µg/mL (100 µL/well) can bind Anti-LILRB2 Antibody, Human IgG1 with a linear range of 0.5-4 ng/mL (QC tested).

Background

Leukocyte immunoglobulin-like receptor subfamily B member 2 (LILRB2) is also known as CD85 antigen-like family member D (CD85d), Immunoglobulin-like transcript 4 (ILT-4), Monocyte / macrophage immunoglobulin-like receptor 10 (MIR-10), which is a member of the the subfamily B class of LIR receptors. LILRB2 is receptor for class I MHC antigens. LILRB2 recognizes a broad spectrum of HLA-A, HLA-B, HLA-C and HLA-G alleles. LILRB2 competes with CD8A for binding to class I MHC antigens. LILRB2 / CD85d inhibits FCGR1A-mediated phosphorylation of cellular proteins and mobilization of intracellular calcium ions.

Discounts, Gifts,
and more!



www.acrobiosystems.com



7/10/2026