

Mouse MASP2 (287-685) Protein, His Tag

Catalog # MA2-M51H3



BIOSYSTEMS
Acro

Surprise Inside!

Synonym

MASP2, MASP-2, Mannan-binding lectin serine protease 2, MASP1P1, sMAP

Source

Mouse MASP2 (287-685) Protein, His Tag (MA2-M51H3) is expressed from *E. coli* cells. It contains AA Thr 287 - Phe 685 (Accession # [Q91WP0](#)).

Predicted N-terminus: Met

Molecular Characterization

MASP2(Thr 287 - Phe 685)
Q91WP0

Poly-his

This protein carries a polyhistidine tag at the C-terminus.

The protein has a calculated MW of 45.4 kDa. The protein migrates as 45-50 kDa when calibrated against [Star Ribbon Pre-stained Protein Marker](#) under reducing (R) condition (SDS-PAGE).

Endotoxin

Less than 1.0 EU per µg by the LAL method / rFC method.

Purity

>95% as determined by SDS-PAGE.

Formulation

Supplied as 0.2 µm filtered solution in 50 mM Tris, 0.3 M Arginine, 0.5 M NaCl, pH8.0 with glycerol as protectant.

Contact us for customized product form or formulation.

Shipping

This product is supplied and shipped with dry ice, please inquire the shipping cost.

Storage

Please avoid repeated freeze-thaw cycles.

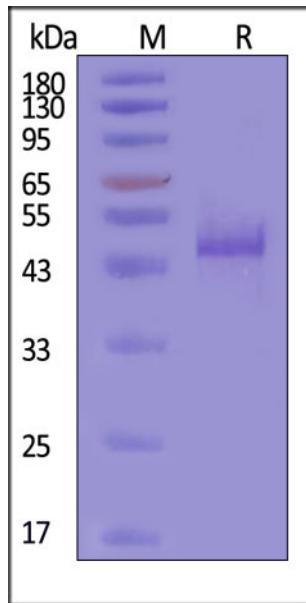
This product is stable after storage at:

- The product **MUST** be stored at -70°C or lower upon receipt;
- -70°C for 3 months under sterile conditions.

ACRO Quality Management System

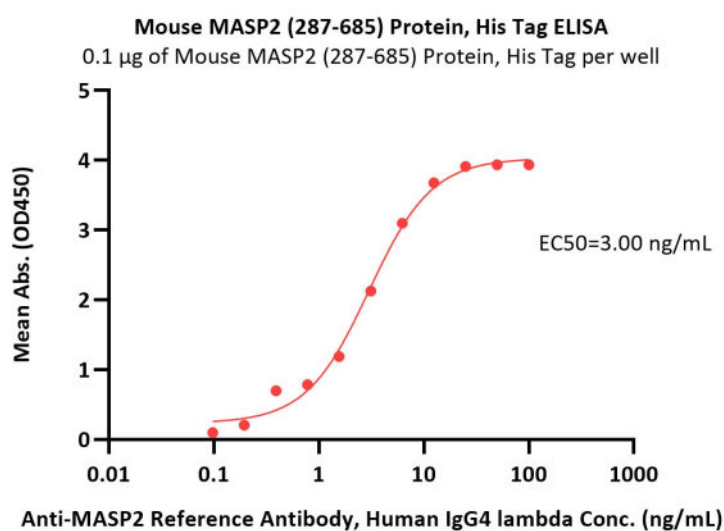
- [QMS\(ISO, GMP\)](#)
- [Quality Advantages](#)
- [Quality Control Process](#)

SDS-PAGE



Mouse MASP2 (287-685) Protein, His Tag on SDS-PAGE under reducing (R) condition. The gel was stained with Coomassie Blue. The purity of the protein is greater than 95% (With [Star Ribbon Pre-stained Protein Marker](#)).

Bioactivity-ELISA



Immobilized Mouse MASP2 (287-685) Protein, His Tag (Cat. No. MA2-M51H3) at 1 µg/mL (100 µL/well) can bind Anti-MASP2 Reference Antibody, Human IgG4 lambda with a linear range of 0.1-6 ng/mL (QC tested).

Background

Mannan-binding lectin-associated serine protease 2 (MASP-2) is a member of the lectin pathway of complement and is one of two splice products from the MASP2 gene. The protein is secreted from the liver as a zymogenic protein consisting of 671 residues and circulates at a concentration of approximately 0.41 µg/mL in the serum. MASP-2 is associated with pattern-recognition molecules as a homodimer that is activated by MASP-1 when bound to an activating surface resulting in an A-chain and a B-chain linked by a disulphide bond. MASP-2 is also capable of autoactivating. Activated MASP-2 cleaves C2 and C4, which leads to formation of the C3 convertase, C4b2a, and activation of complement.

Discounts, Gifts,
and more!



www.acrobiosystems.com



4/27/2026