

Human HGF R / c-MET Protein, His Tag, low endotoxin (MALS verified)

Catalog # MET-H5227



BIOSYSTEMS
Acro

Surprise Inside!

Synonym

MET, AUTS9, HGFR, RCCP2, c-Met

Source

Human HGF R, His Tag (MET-H5227) is expressed from human 293 cells (HEK293). It contains AA Glu 25 - Thr 932 (Accession # [P08581-1](#)).

Predicted N-terminus: Glu 25

Molecular Characterization

HGF R(Glu 25 - Thr 932)
P08581-1

Poly-his

This protein carries a polyhistidine tag at the C-terminus. The mature form of HGFR is a disulfide-linked heterodimer composed of proteolytically cleaved α and β chain. Each α and β chain has a calculated MW of 32.5 kDa and 70.2 kDa. The protein migrates as 40-45 kDa and 85-90 kDa when calibrated against [Star Ribbon Pre-stained Protein Marker](#) under reducing (R) condition (SDS-PAGE) due to glycosylation.

Endotoxin

Less than 0.01 EU per μ g by the LAL method / rFC method.

Purity

>90% as determined by SDS-PAGE.

>95% as determined by SEC-MALS.

Formulation

Lyophilized from 0.22 μ m filtered solution in PBS, pH7.4 with trehalose as protectant.

Contact us for customized product form or formulation.

Reconstitution

Please see Certificate of Analysis for specific instructions.

For best performance, we strongly recommend you to follow the reconstitution protocol provided in the CoA.

Storage

For long term storage, the product should be stored at lyophilized state at -20°C or lower.

Please avoid repeated freeze-thaw cycles.

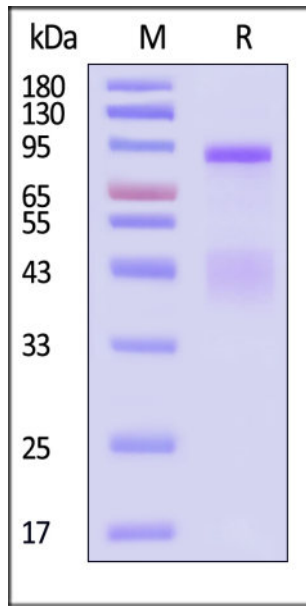
This product is stable after storage at:

- -20°C to -70°C for 12 months in lyophilized state;
- -70°C for 3 months under sterile conditions after reconstitution.

ACRO Quality Management System

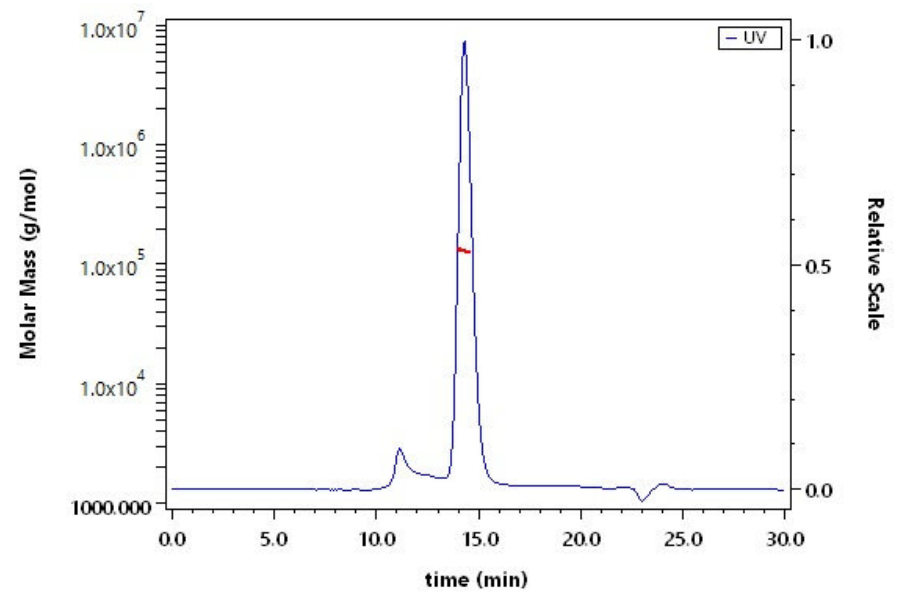
- [QMS\(ISO, GMP\)](#)
- [Quality Advantages](#)
- [Quality Control Process](#)

SDS-PAGE



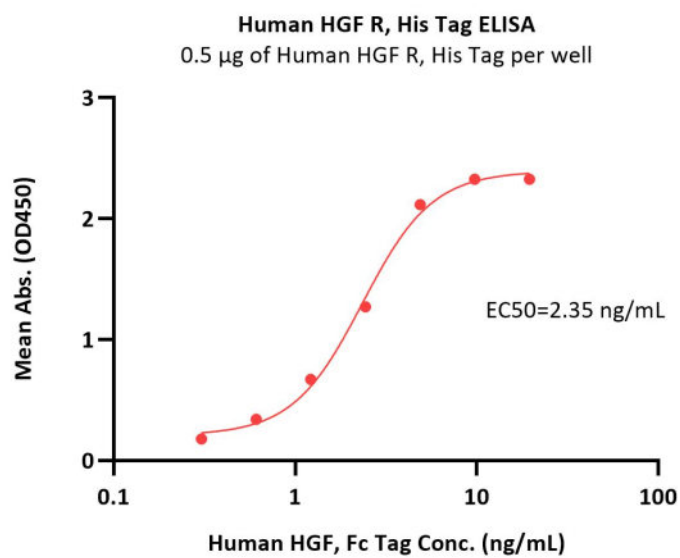
Human HGF R, His Tag on SDS-PAGE under reducing (R) condition. The gel was stained with Coomassie Blue. The purity of the protein is greater than 90% (With [Star Ribbon Pre-stained Protein Marker](#)).

SEC-MALS



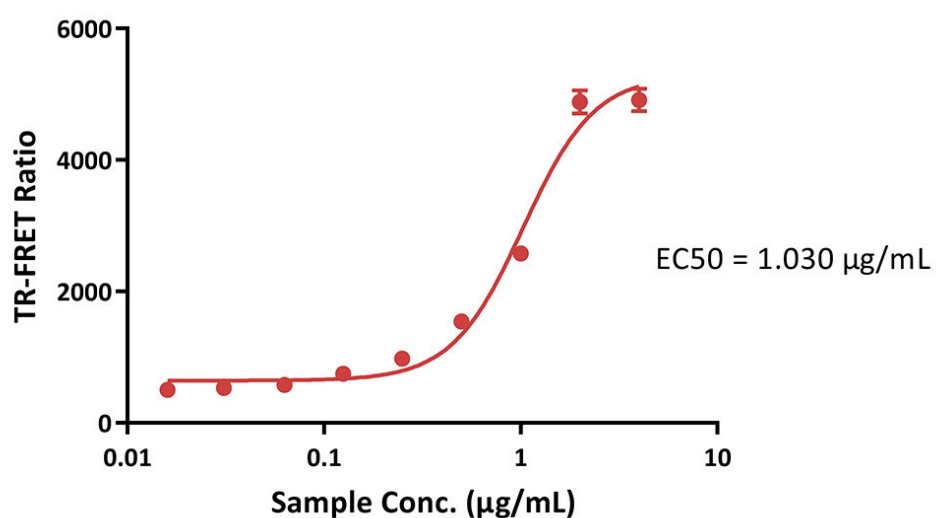
The purity of Human HGF R, His Tag (Cat. No. MET-H5227) is more than 95% and the molecular weight of this protein is around 100-140 kDa verified by SEC-MALS.

Bioactivity-ELISA



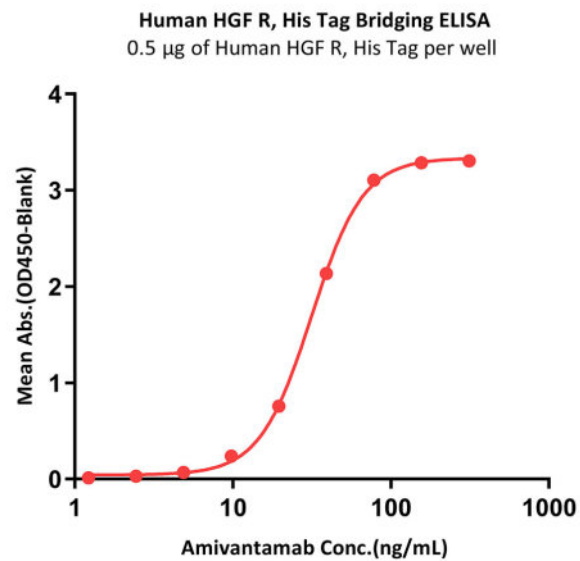
Immobilized Human HGF R, His Tag (Cat. No. MET-H5227) at 5 μ g/mL (100 μ L/well) can bind Human HGF, Fc Tag (Cat. No. HGF-H5253) with a linear range of 0.3-5 ng/mL (QC tested).

Bioactivity-TR-FRET



In this TR-FRET assay, Streptavidin Protein Europium chelate (for TR-FRET) (Cat. No. FRT-TD09) is used as the Donor and Monoclonal Anti-His Tag Antibody, Rabbit IgG FA-Labeled (for TR-FRET) (Cat. No. FRT-TA11) is used as the Acceptor. Human HGF R, His Tag (Cat. No. MET-H5227), at 10 ng/well and Biotinylated Human EGF R, Fc, Avitag (Cat. No. EGR-H82F8), at 10 ng/well, can bind to the Amivantamab with a linear detection range of 4-0.016 μ g/mL (Routinely tested).

Bridging ELISA



Validated with Bispecific Antibody.

Immobilized Human HGF R Protein, His Tag (Cat. No. MET-H5227) at 5 µg/mL, add increasing concentrations of Amivantamab and then add Biotinylated Human EGF R Protein, His, Avitag (Cat. No. EGR-H82E3) at 5 µg/mL. Detection was performed using HRP-conjugated streptavidin with sensitivity of 4.88 ng/mL (Routinely tested).

Background

Hepatocyte growth factor receptor (HGFR) is also known as mesenchymal-epithelial transition factor (MET), c-Met, and is a glycosylated receptor tyrosine kinase that plays a central role in epithelial morphogenesis and cancer development. HGFR protein possesses tyrosine-kinase activity. The primary single chain precursor protein is post-translationally cleaved to produce the alpha and beta subunits, which are disulfide linked to form the mature receptor. HGFR is normally expressed by cells of epithelial origin, while expression of HGF is restricted to cells of mesenchymal origin. Upon HGF stimulation, HGFR induces several biological responses that collectively give rise to a program known as invasive growth. Abnormal HGFR activation in cancer correlates with poor prognosis, where aberrantly active HGFR triggers tumor growth, formation of new blood vessels (angiogenesis) that supply the tumor with nutrients, and cancer spread to other organs (metastasis). HGFR is deregulated in many types of human malignancies, including cancers of kidney, liver, stomach, breast, and brain. Normally, only stem cells and progenitor cells express HGFR. However, cancer stem cells are thought to hijack the ability of normal stem cells to express HGFR, and thus become the cause of cancer persistence and spread to other sites in the body. Various mutations in the HGFR gene are associated with papillary renal carcinoma. HGFR mediates a complex program known as invasive growth. Activation of HGFR triggers mitogenesis, and morphogenesis.

Discounts, Gifts,
and more!



www.acrobiosystems.com



5/18/2026