

Human Neprilysin / MME / CD10 Protein, His Tag (active enzyme, MALS verified)

Catalog # MME-H5243



BIOSYSTEMS
Acro

Surprise Inside!

Synonym

MME, CALLA, CD10, DKFZp686O16152, MGC126681, MGC126707, NEP, SFE, Neprilysin

Source

Human Neprilysin Protein, His Tag (MME-H5243) is expressed from human 293 cells (HEK293). It contains AA Tyr 52 - Trp 750 (Accession # [P08473](#)).

Predicted N-terminus: His

Molecular Characterization

Poly-his Neprilysin(Tyr 52 - Trp 750)
P08473

This protein carries a polyhistidine tag at the N-terminus.

The protein has a calculated MW of 81.7 kDa. The protein migrates as 95-130 kDa when calibrated against [Star Ribbon Pre-stained Protein Marker](#) under reducing (R) condition (SDS-PAGE) due to glycosylation.

Endotoxin

Less than 0.1 EU per µg by the LAL method / rFC method.

Purity

>90% as determined by SDS-PAGE.

>90% as determined by SEC-MALS.

Formulation

Lyophilized from 0.22 µm filtered solution in 50 mM Tris, 150 mM NaCl, pH7.5 with trehalose as protectant.

Contact us for customized product form or formulation.

Reconstitution

Please see Certificate of Analysis for specific instructions.

For best performance, we strongly recommend you to follow the reconstitution protocol provided in the CoA.

Storage

For long term storage, the product should be stored at lyophilized state at -20°C or lower.

Please avoid repeated freeze-thaw cycles.

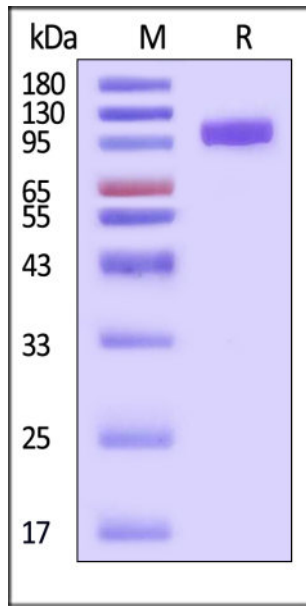
This product is stable after storage at:

- -20°C to -70°C for 12 months in lyophilized state;
- -70°C for 3 months under sterile conditions after reconstitution.

ACRO Quality Management System

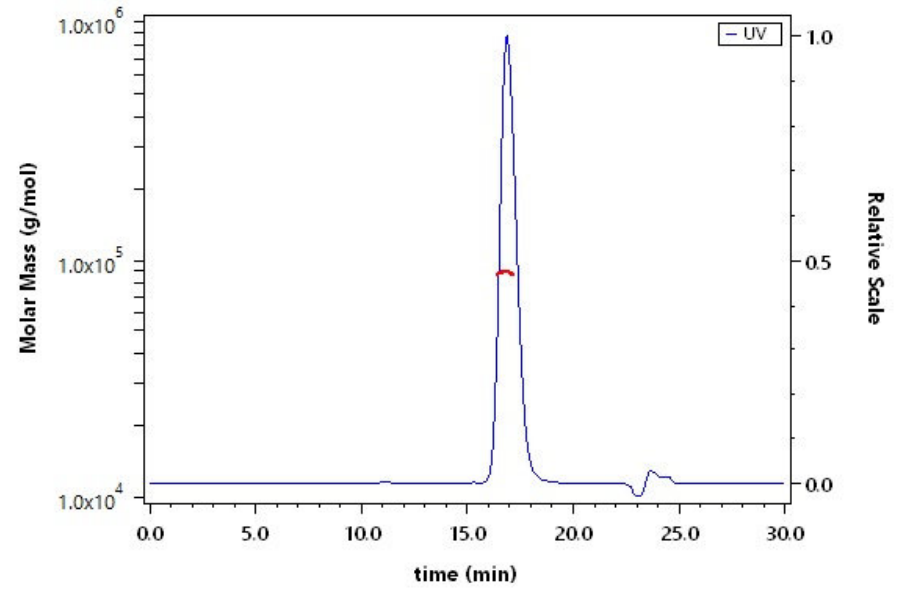
- [QMS\(ISO, GMP\)](#)
- [Quality Advantages](#)
- [Quality Control Process](#)

SDS-PAGE



Human Neprilysin Protein, His Tag on SDS-PAGE under reducing (R) condition. The gel was stained with Coomassie Blue. The purity of the protein is greater than 90% (With [Star Ribbon Pre-stained Protein Marker](#)).

SEC-MALS



The purity of Human Neprilysin Protein, His Tag (Cat. No. MME-H5243) is more than 90% and the molecular weight of this protein is around 80-110 kDa verified by SEC-MALS.

Bioactivity

Measured by its ability to cleave the fluorogenic peptide substrate, MCA-RPPGFSAFK(DNP)-OH. The specific activity is >2000 pmol/min/ μ g (QC tested).

Background

CD10 is an endopeptidase that degrades various bioactive peptides in the extracellular matrix. In addition to enzymatic degradation, it affects multiple intracellular signal transduction pathways. CD10 expression has been extensively studied in human epithelial cancers of numerous organs and sites. CD10 expression pattern depended on the histotypes of thyroid lesions. When possible metastatic tumours and non-epithelial tumours are excluded, high CD10 expression may be useful in determining whether a primary thyroid carcinoma includes an anaplastic component.

Discounts, Gifts,
and more!



www.acrobiosystems.com

