

FITC-Labeled Human MRGPRX2 Full Length Protein, Flag Tag (Nanodisc-pro)

Catalog # MR2-HF2D3



BIOSYSTEMS
Acro

Application

- Immunization
- Cell based assay (FACS or functional assay)
- Affinity testing ([SPR](#) / [BLI](#))
- Screening ([ELISA](#))

Synonym

MRGPRX2

Source

Nanodisc-pro FITC-Labeled Human MRGPRX2 Full Length Protein, Flag Tag (MR2-HF2D3) is expressed from human 293 cells (HEK293). It contains AA Asp 2 - Val 330 (Accession # [Q96LB1](#)).

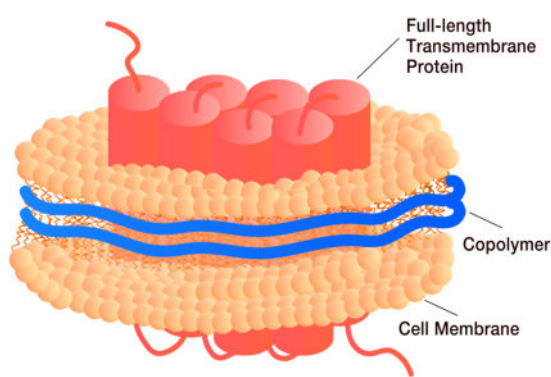
Predicted N-terminus: Asp

Molecular Characterization

Flag	MRGPRX2(Asp 2 - Val 330) Q96LB1
------	------------------------------------

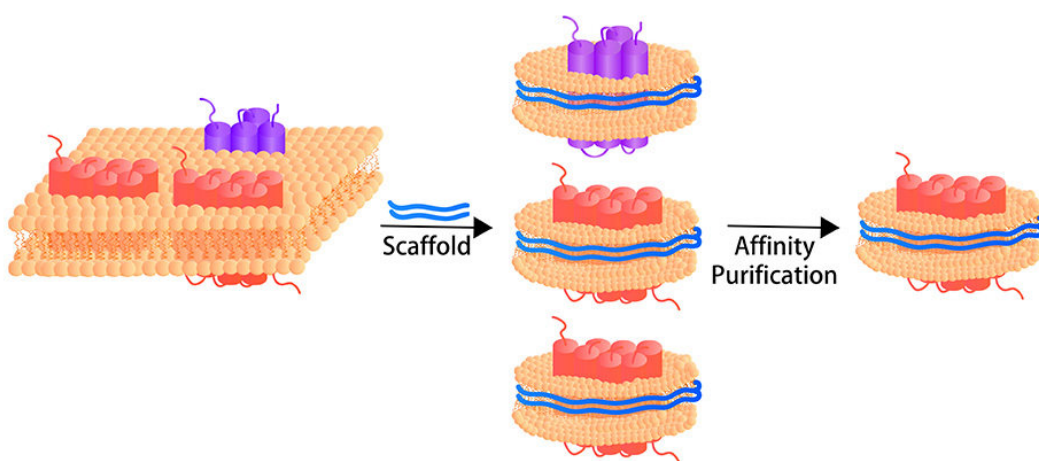
This protein carries a flag tag at the N-terminus. The protein has a calculated MW of 53.3 kDa.

• Structure



Nanodisc-pro membrane protein is wrapped by a piece of cell membrane and copolymer.

• Synthesis Process



Nanodisc-pro membrane protein extraction is a gentle, non-disruptive process that **directly isolates full-length transmembrane proteins together with their surrounding native phospholipids from cellular membranes**, without breaking or disturbing the original membrane structure. This preserves the membrane protein's natural conformational landscape and native lipid environment, yielding stable nanodisc that retain cellular phospholipids and eliminate the need for detergent solubilization, with fully preserved biological activity—making them **ideal for cell-based assays such as FACS** and binding assays in antibody discovery and screening (ELISA), etc.

Conjugate

FITC

Excitation source: 488 nm spectral line, argon-ion laser

Excitation Wavelength: 488 nm

Emission Wavelength: 535 nm

Labeling

The primary amines in the side chains of lysine residues and the N-terminus of the protein are conjugated with FITC using standard chemical labeling method. The residual FITC is removed by molecular sieve treatment during purification process.

Protein Ratio

The FITC to protein molar ratio is **2.5-4.5**.

Formulation

Supplied as 0.2 µm filtered solution in 20 mM HEPES, 150 mM NaCl, pH7.5 with glycerol as protectant.

Contact us for customized product form or formulation.

Shipping

This product is supplied and shipped with dry ice, please inquire the shipping cost.

Storage

Please protect from light and avoid repeated freeze-thaw cycles.

This product is stable after storage at:

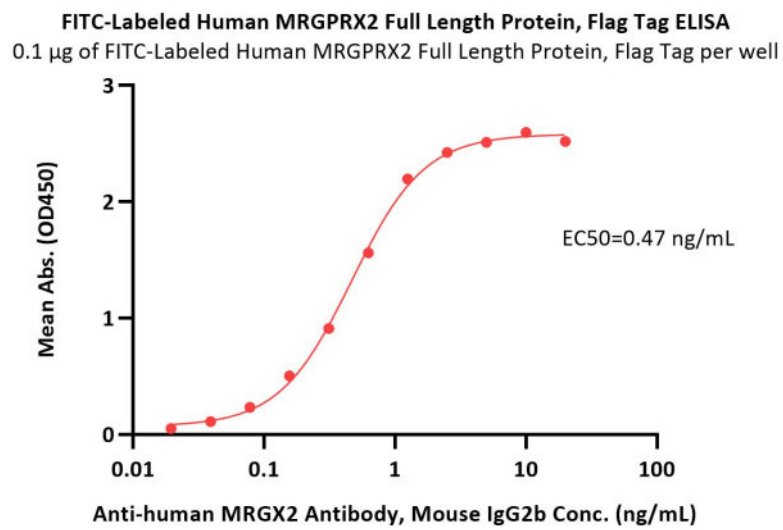
- The product **MUST** be stored at -70°C or lower upon receipt;
- -70°C for 12 months under sterile conditions.

ACRO Quality Management System

- [QMS\(ISO, GMP\)](#)
- [Quality Advantages](#)
- [Quality Control Process](#)

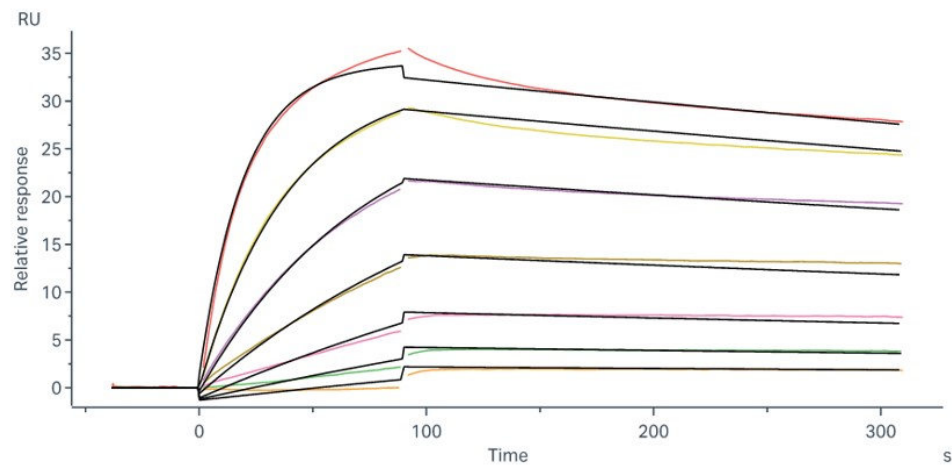
*The isotype control of empty/mock nanodisc (Cat. No. [APO-H5143](#)) is sold separately and not included in protein, you can follow [the link](#) for product information.

Bioactivity-ELISA



Immobilized FITC-Labeled Human MRGPRX2 Full Length Protein, Flag Tag (Cat. No. MR2-HF2D3) at 1 µg/mL (100 µL/well) can bind Anti-human MRGX2 Antibody, Mouse IgG2b with a linear range of 0.02-3 ng/mL (QC tested).

Bioactivity-SPR



FITC-Labeled Human MRGPRX2 Full Length Protein, Flag Tag (Cat. No. MR2-HF2D3) immobilized on CM5 Chip can bind Anti-human MRGX2 Antibody, Mouse IgG2b with an affinity constant of 0.186 nM as determined in a SPR assay (Biacore 8K) (Routinely tested).

Background

The protein belongs to the family of G-protein coupled receptors, that are preferentially activated by adenosine and uridine nucleotides. It is moderately expressed in undifferentiated HL60 cells, and is located on both chromosomes X and Y.

Discounts, Gifts,
and more!



www.acrobiosystems.com



5/27/2026