

Human Mesothelin / MSLN (487-598) Protein, His Tag (MALS verified)

Catalog # MSN-H52H3



BIOSYSTEMS
Acro

Surprise Inside!

Synonyms

MSLN, Mesothelin, MPF

Source

Human Mesothelin (487-598) Protein, His Tag (MSN-H52H3) is expressed from human 293 cells (HEK293). It contains AA Met 487 - Ser 598 (Accession # [Q13421-3](#)).

Predicted N-terminus: Met 487

Molecular Characterization

Mesothelin(Met 487 - Ser 598)
Q13421-3

Poly-his

This protein carries a polyhistidine tag at the C-terminus.

The protein has a calculated MW of 14.3 kDa. The protein migrates as 15-25 kDa when calibrated against [Star Ribbon Pre-stained Protein Marker](#) under reducing (R) condition (SDS-PAGE) due to glycosylation.

Endotoxin

Less than 1.0 EU per µg by the LAL method / rFC method.

Purity

>90% as determined by SDS-PAGE.

>90% as determined by SEC-MALS.

Formulation

Lyophilized from 0.22 µm filtered solution in PBS, pH7.4 with trehalose as protectant.

Contact us for customized product form or formulation.

Reconstitution

Please see Certificate of Analysis for specific instructions.

For best performance, we strongly recommend you to follow the reconstitution protocol provided in the CoA.

Shipping and Storage

This product is shipped at ambient temperature.

For long term storage, the product should be stored at lyophilized state at -20°C or lower.

Please avoid repeated freeze-thaw cycles.

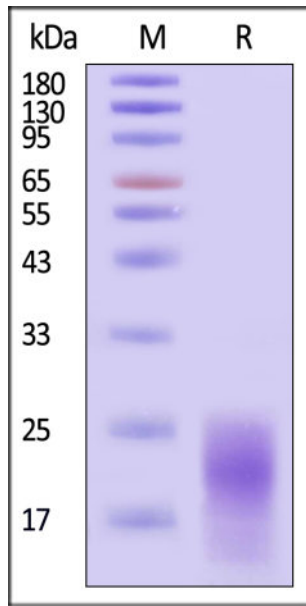
This product is stable after storage at:

- -20°C to -70°C for 12 months in lyophilized state;
- -70°C for 3 months under sterile conditions after reconstitution.

ACRO Quality Management System

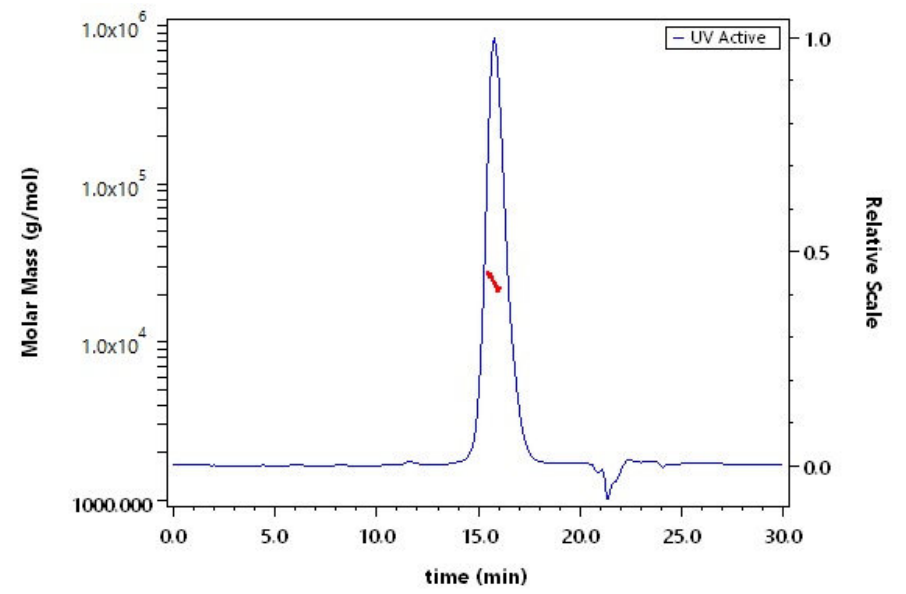
- [QMS\(ISO, GMP\)](#)
- [Quality Advantages](#)
- [Quality Control Process](#)

SDS-PAGE



Human Mesothelin (487-598) Protein, His Tag on SDS-PAGE under reducing (R) condition. The gel was stained with Coomassie Blue. The purity of the protein is greater than 90% (With [Star Ribbon Pre-stained Protein Marker](#)).

SEC-MALS



The purity of Human Mesothelin (487-598) Protein, His Tag (Cat. No. MSN-H52H3) is more than 90% and the molecular weight of this protein is around 14-25 kDa verified by SEC-MALS.

Background

Mesothelin (MSLN) is also known as CAK1 antigen, Pre-pro-megakaryocyte-potentiating factor, which belongs to the mesothelin family. Mesothelin / MSLN can be proteolytically cleaved into the following two chains by a furin-like convertase: Megakaryocyte-potentiating factor (MPF) and the cleaved form of mesothelin. Both MPF and the cleaved form of mesothelin are N-glycosylated. Mesothelin / MSLN can interact with MUC16. The membrane-anchored forms of MSLN may play a role in cellular adhesion. MPF potentiates megakaryocyte colony formation in vitro.

Discounts, Gifts,
and more!



www.acrobiosystems.com

