

# FITC-Labeled Human NKp46 / NCR1 / CD335 Protein, His Tag

Catalog # NC1-HF2H3



BIOSYSTEMS  
**Acro**

Surprise Inside!

## Synonym

Nkp46

## Source

FITC-Labeled Human NKp46 Protein, His Tag (NC1-HF2H3) is expressed from human 293 cells (HEK293). It contains AA Gln 22 - Arg 258 (Accession # [O76036-1](#)).

## Molecular Characterization

|                                     |          |
|-------------------------------------|----------|
| Nkp46(Gln 22 - Arg 258)<br>O76036-1 | Poly-his |
|-------------------------------------|----------|

This protein carries a polyhistidine tag at the C-terminus.

The protein has a calculated MW of 28.9 kDa. The protein migrates as 38-43 kDa when calibrated against [Star Ribbon Pre-stained Protein Marker](#) under reducing (R) condition (SDS-PAGE) due to glycosylation.

## Conjugate

FITC

Excitation source: 488 nm spectral line, argon-ion laser

Excitation Wavelength: 488 nm

Emission Wavelength: 535 nm

## Labeling

**The primary amines in the side chains of lysine residues and the N-terminus of the protein are conjugated with FITC using standard chemical labeling method. The residual FITC is removed by molecular sieve treatment during purification process.**

## Protein Ratio

The FITC to protein molar ratio is **1.8-2.8**.

## Endotoxin

Less than 1.0 EU per µg by the LAL method / rFC method.

## Purity

>90% as determined by SDS-PAGE.

## Formulation

Lyophilized from 0.22 µm filtered solution in PBS, pH7.4 with trehalose as protectant.

Contact us for customized product form or formulation.

## Reconstitution

Please see Certificate of Analysis for specific instructions.

**For best performance, we strongly recommend you to follow the reconstitution protocol provided in the CoA.**

## Storage

For long term storage, the product should be stored at lyophilized state at -20°C or lower.

**Please protect from light and avoid repeated freeze-thaw cycles.**

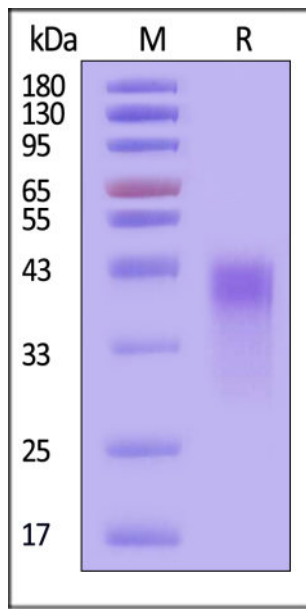
This product is stable after storage at:

- -20°C to -70°C for 12 months in lyophilized state;
- -70°C for 3 months under sterile conditions after reconstitution.

## ACRO Quality Management System

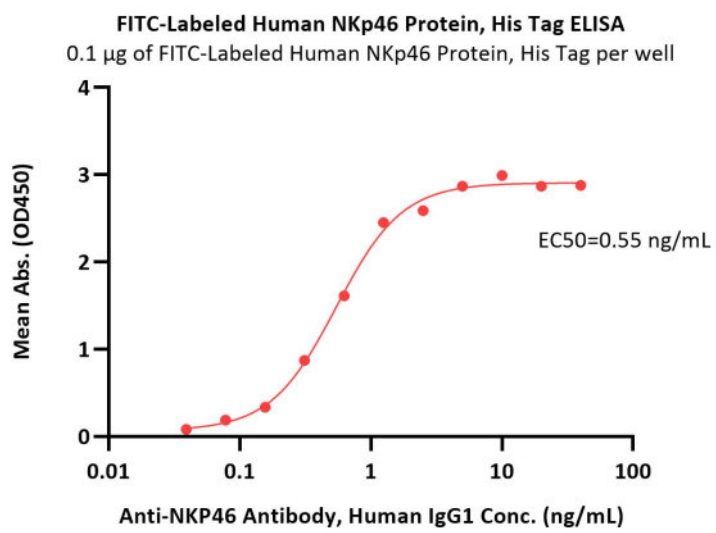
- [QMS\(ISO, GMP\)](#)
- [Quality Advantages](#)
- [Quality Control Process](#)

## SDS-PAGE



FITC-Labeled Human NKp46 Protein, His Tag on SDS-PAGE under reducing (R) condition. The gel was stained with Coomassie Blue. The purity of the protein is greater than 90% (With [Star Ribbon Pre-stained Protein Marker](#)).

## Bioactivity-ELISA



Immobilized FITC-Labeled Human NKp46 Protein, His Tag (Cat. No. NC1-HF2H3) at 1 µg/mL (100 µL/well) can bind Anti-NKP46 Antibody, Human IgG1 with a linear range of 0.04-1 ng/mL (QC tested).

## Background

Natural cytotoxicity triggering receptor 1 (NCR1) is also known as Natural killer cell p46-related protein (NK-p46), Lymphocyte antigen 94 homolog (LY94), CD antigen CD335, which belongs to the natural cytotoxicity receptor (NCR) family. NCR1 contains two Ig-like (immunoglobulin-like) domains. NCR1 interacts with CD247 and FCER1G. NCR1 / CD335 may contribute to the increased efficiency of activated natural killer (NK) cells to mediate tumor cell lysis.

Discounts, Gifts,  
and more!



[www.acrobiosystems.com](http://www.acrobiosystems.com)

