



Synonym

NCR1, LY94, CD335, NK-p46, hNKp46

Source

Biotinylated Human NKp46 Protein, His Tag, primary amine labeling (NK6-H82E2) is expressed from human 293 cells (HEK293). It contains AA Gln 22 - Asn 254 (Accession # [O76036-6](#)). It is the biotinylated form of Human NKp46, His Tag (Cat. No. NC1-H52H4).

Predicted N-terminus: Gln 22

Molecular Characterization

NKp46(Gln 22 - Asn 254)
O76036-6

Poly-his

This protein carries a polyhistidine tag at the C-terminus.

The protein has a calculated MW of 28.3 kDa. The protein migrates as 35-45 kDa when calibrated against [Star Ribbon Pre-stained Protein Marker](#) under reducing (R) condition (SDS-PAGE) due to glycosylation.

Labeling

The primary amines in the side chains of lysine residues and the N-terminus of the protein are conjugated with biotins using standard chemical labeling method. A standard biotin reagent (13.5 angstroms) is used in this product.

Protein Ratio

Passed as determined by the HABA assay / binding ELISA.

Purity

>95% as determined by SDS-PAGE.

Formulation

Lyophilized from 0.22 µm filtered solution in PBS, pH7.4 with trehalose as protectant.

Contact us for customized product form or formulation.

Reconstitution

Please see Certificate of Analysis for specific instructions.

For best performance, we strongly recommend you to follow the reconstitution protocol provided in the CoA.

Storage

For long term storage, the product should be stored at lyophilized state at -20°C or lower.

Please avoid repeated freeze-thaw cycles.

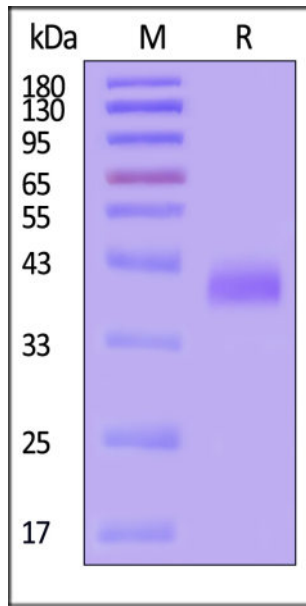
This product is stable after storage at:

- -20°C to -70°C for 12 months in lyophilized state;
- -70°C for 3 months under sterile conditions after reconstitution.

ACRO Quality Management System

- [QMS\(ISO, GMP\)](#)
- [Quality Advantages](#)
- [Quality Control Process](#)

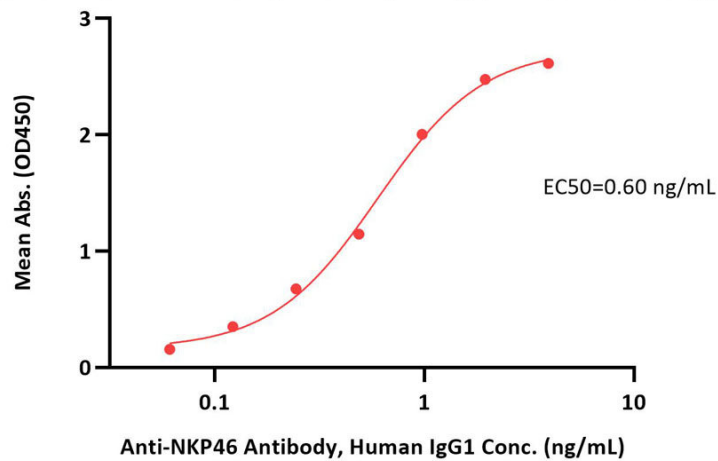
SDS-PAGE



Biotinylated Human NKp46 Protein, His Tag, primary amine labeling on SDS-PAGE under reducing (R) condition. The gel was stained with Coomassie Blue. The purity of the protein is greater than 95% (With [Star Ribbon Pre-stained Protein Marker](#)).

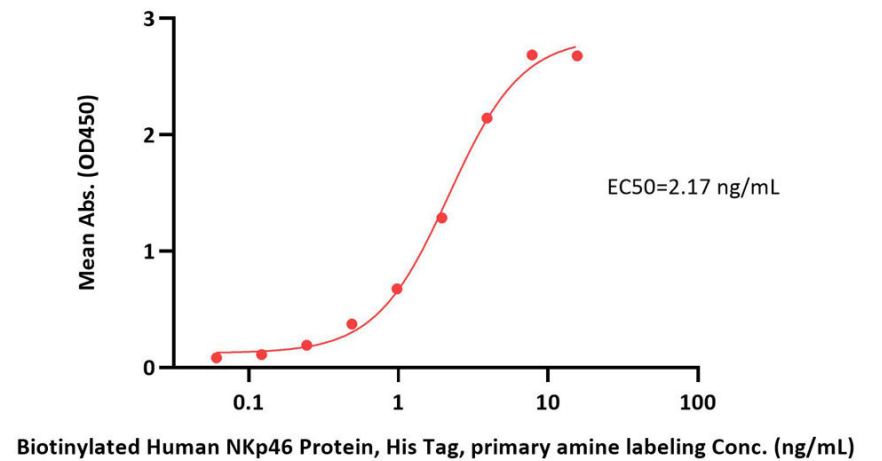
Bioactivity-ELISA

Biotinylated Human NKp46 Protein, His Tag, primary amine labeling ELISA
0.1 µg of Biotinylated Human NKp46 Protein, His Tag, primary amine labeling per well



Immobilized Biotinylated Human NKp46 Protein, His Tag, primary amine labeling (Cat. No. NK6-H82E2) at 1 µg/mL (100 µL/well) on streptavidin (Cat. No. STN-N5116) precoated (0.5 µg/well) plate can bind Anti-NKP46 Antibody, Human IgG1 with a linear range of 0.1-1 ng/mL (QC tested).

Biotinylated Human NKp46 Protein, His Tag, primary amine labeling ELISA
0.1 µg of Anti-NKP46 Antibody, Human IgG1 per well



Immobilized Anti-NKP46 Antibody, Human IgG1 at 1 µg/mL (100 µL/well) can bind Biotinylated Human NKp46 Protein, His Tag, primary amine labeling (Cat. No. NK6-H82E2) with a linear range of 0.1-4 ng/mL (Routinely tested).

Background

Natural cytotoxicity triggering receptor 1 (NCR1) is also known as Natural killer cell p46-related protein (NK-p46), Lymphocyte antigen 94 homolog (LY94), CD antigen CD335, which belongs to the natural cytotoxicity receptor (NCR) family. NCR1 contains two Ig-like (immunoglobulin-like) domains. NCR1 interacts with CD247 and FCER1G. NCR1 / CD335 may contribute to the increased efficiency of activated natural killer (NK) cells to mediate tumor cell lysis.

Discounts, Gifts,
and more!



www.acrobiosystems.com

