

# Canine PD-1 / PDCD1 Protein, His Tag, low endotoxin (MALS verified)

Catalog # PD1-C52H9



BIOSYSTEMS  
**Acro**

## Synonym

PDCD1, PD1, CD279, SLEB2

## Source

Canine PD-1, His Tag (PD1-C52H9) is expressed from human 293 cells (HEK293). It contains AA Leu 25 - Gly 168 (Accession # [NP\\_001301026.1](#)).

Predicted N-terminus: Leu 25

## Molecular Characterization

PD-1(Leu 25 - Gly 168)  
NP\_001301026.1

Poly-his

This protein carries a polyhistidine tag at the C-terminus.

The protein has a calculated MW of 18.0 kDa. The protein migrates as 30-40 kDa when calibrated against [Star Ribbon Pre-stained Protein Marker](#) under reducing (R) condition (SDS-PAGE) due to glycosylation.

## Endotoxin

Less than 0.01 EU per µg by the LAL method / rFC method.

## Purity

>90% as determined by SDS-PAGE.

>95% as determined by SEC-MALS.

## Formulation

Lyophilized from 0.22 µm filtered solution in PBS, pH7.4 with trehalose as protectant.

Contact us for customized product form or formulation.

## Reconstitution

Please see Certificate of Analysis for specific instructions.

**For best performance, we strongly recommend you to follow the reconstitution protocol provided in the CoA.**

## Storage

For long term storage, the product should be stored at lyophilized state at -20°C or lower.

**Please avoid repeated freeze-thaw cycles.**

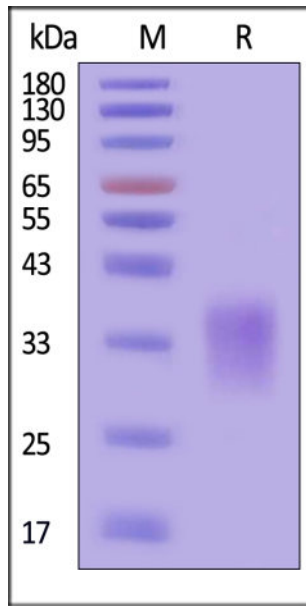
This product is stable after storage at:

- -20°C to -70°C for 12 months in lyophilized state;
- -70°C for 3 months under sterile conditions after reconstitution.

## ACRO Quality Management System

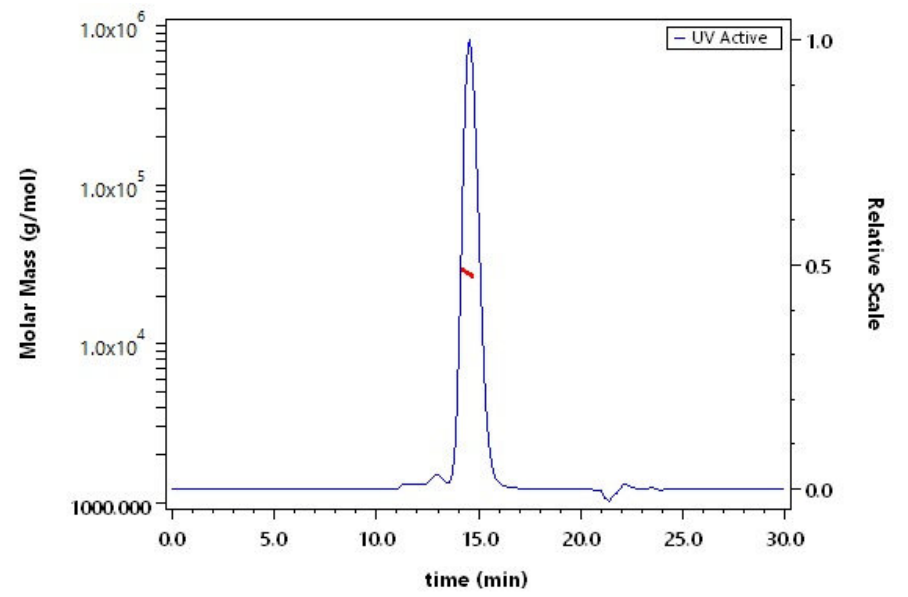
- [QMS\(ISO, GMP\)](#)
- [Quality Advantages](#)
- [Quality Control Process](#)

## SDS-PAGE



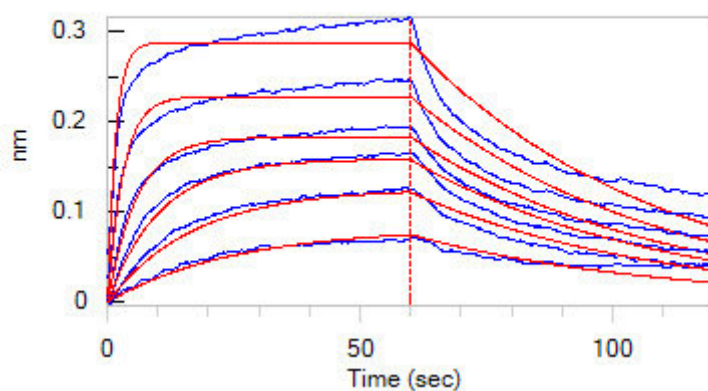
Canine PD-1, His Tag on SDS-PAGE under reducing (R) condition. The gel was stained with Coomassie Blue. The purity of the protein is greater than 90% (With [Star Ribbon Pre-stained Protein Marker](#)).

## SEC-MALS



The purity of Canine PD-1, His Tag (Cat. No. PD1-C52H9) is more than 95% and the molecular weight of this protein is around 25-35 kDa verified by SEC-MALS.

## Bioactivity-BLI



Loaded Canine PD-1, His Tag (Cat. No. PD1-C52H9) on HIS1K Biosensor, can bind Canine PD-L1, Fc Tag (Cat. No. PD1-C52H3) with an affinity constant of 85 nM as determined in BLI assay (ForteBio Octet Red96e) (Routinely tested).

## Background

Programmed cell death protein 1 (PD-1) is also known as CD279 and PDCD1, is a type I membrane protein and is a member of the extended CD28/CTLA-4 family of T cell regulators. PDCD1 is expressed on the surface of activated T cells, B cells, macrophages, myeloid cells and a subset of thymocytes. PD-1 has two ligands, PD-L1 and PD-L2, which are members of the B7 family. PD-L1 is expressed on almost all murine tumor cell lines, including PA1 myeloma, P815 mastocytoma, and B16 melanoma upon treatment with IFN- $\gamma$ . PD-L2 expression is more restricted and is expressed mainly by DCs and a few tumor lines. PD1 inhibits the T-cell proliferation and production of related cytokines including IL-1, IL-4, IL-10 and IFN- $\gamma$  by suppressing the activation and transduction of PI3K/AKT pathway. In addition, coligation of PD1 inhibits BCR-mediated signal by dephosphorylating key signal transducer. In vitro, treatment of anti-CD3 stimulated T cells with PD-L1-Ig results in reduced T cell proliferation and IFN- $\gamma$  secretion. Monoclonal antibodies targeting PD-1 that boost the immune system are being developed for the treatment of cancer.

Discounts, Gifts,  
and more!



[www.acrobiosystems.com](http://www.acrobiosystems.com)

