

Human PD-L1 / B7-H1 (19-134) Protein, His Tag (recommended for biopanning) (MALS verified)

Catalog # PD1-H52H3



BIOSYSTEMS
Acro

Surprise Inside!

Synonym

PD-L1, CD274, B7-H1, PDCD1L1, PDCD1LG1

Source

Human PD-L1 (19-134), His Tag (PD1-H52H3) is expressed from human 293 cells (HEK293). It contains AA Phe 19 - Tyr 134 (Accession # [Q9NZQ7-1](#)).

Predicted N-terminus: Phe 19

Molecular Characterization

PD-L1(Phe 19 - Tyr 134)
Q9NZQ7-1

Poly-his

This protein carries a polyhistidine tag at the C-terminus.

The protein has a calculated MW of 15.2 kDa. The protein migrates as 17 kDa and 19 kDa when calibrated against [Star Ribbon Pre-stained Protein Marker](#) under reducing (R) condition (SDS-PAGE) due to glycosylation.

Application

PD1-H52H3 works best for experiments that test the binding between PD-L1 and candidate antibodies, such as biopanning and other relevant assays. This product is NOT suitable for testing PD1-PDL1 binding. For this type of application, we strongly recommend you to choose PD1-H82F3 as an alternative.

Endotoxin

Less than 1.0 EU per µg by the LAL method / rFC method.

Purity

>95% as determined by SDS-PAGE.

>95% as determined by SEC-MALS.

Formulation

Lyophilized from 0.22 µm filtered solution in PBS, pH7.4 with trehalose as protectant.

Contact us for customized product form or formulation.

Reconstitution

Please see Certificate of Analysis for specific instructions.

For best performance, we strongly recommend you to follow the reconstitution protocol provided in the CoA.

Storage

For long term storage, the product should be stored at lyophilized state at -20°C or lower.

Please avoid repeated freeze-thaw cycles.

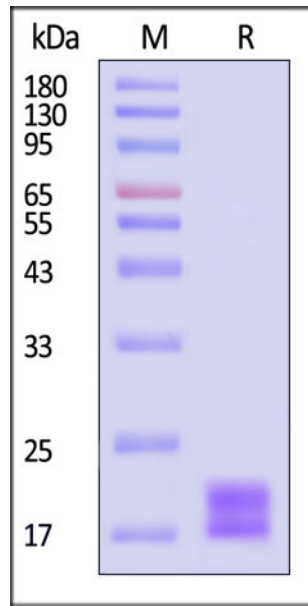
This product is stable after storage at:

- -20°C to -70°C for 12 months in lyophilized state;
- -70°C for 3 months under sterile conditions after reconstitution.

ACRO Quality Management System

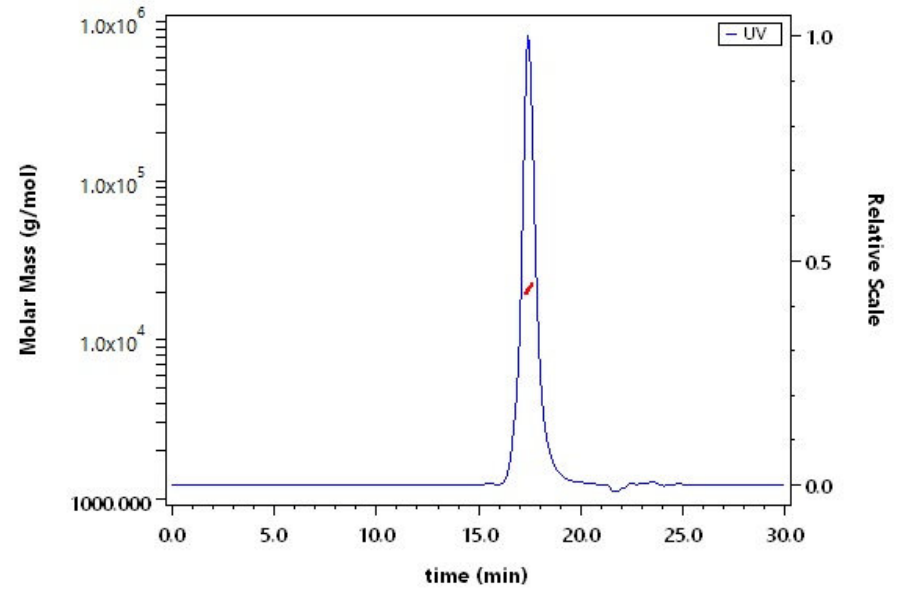
- [QMS\(ISO, GMP\)](#)
- [Quality Advantages](#)
- [Quality Control Process](#)

SDS-PAGE



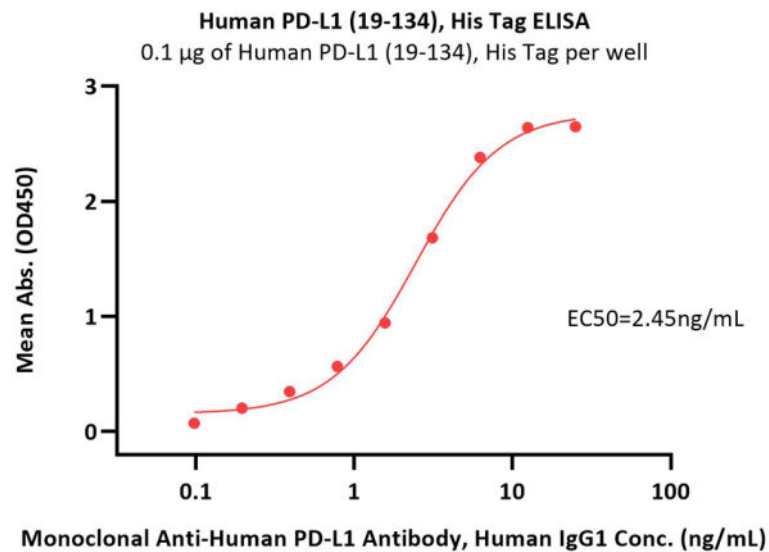
Human PD-L1 (19-134), His Tag on SDS-PAGE under reducing (R) condition. The gel was stained with Coomassie Blue. The purity of the protein is greater than 95% (With [Star Ribbon Pre-stained Protein Marker](#)).

SEC-MALS



The purity of Human PD-L1 (19-134), His Tag (Cat. No. PD1-H52H3) is more than 95% and the molecular weight of this protein is around 15-22 kDa verified by SEC-MALS.

Bioactivity-ELISA



Immobilized Human PD-L1 (19-134), His Tag (Cat. No. PD1-H52H3) at 1 µg/mL (100 µL/well) can bind Monoclonal Anti-Human PD-L1 Antibody, Human IgG1 with a linear range of 0.1-3 ng/mL (QC tested).

Background

Programmed cell death 1 ligand 1 (PDL1) is also known as B7-H, B7H1, MGC142294, MGC142296, PD-L1, PDCD1L1 and PDCD1LG1, which is a member of the growing B7 family of immune molecules and is involved in the regulation of cellular and humoral immune responses. PDL1 is a cell surface immunoglobulin superfamily with two Ig-like domains within the extracellular region and a short cytoplasmic domain. This protein is broadly expressed in the majority of peripheral tissues as well as hematopoietic cells. Interaction between PDL1 and its receptors belonging to the CD28 family of molecules provide both stimulatory and inhibitory signals in regulating T cell activation and tolerance. PDL1 may inhibit ongoing T-cell responses by inducing apoptosis and arresting cell-cycle progression.

Discounts, Gifts,
and more!



www.acrobiosystems.com

