

Monoclonal Anti-Human Polatuzumab Antibody, Mouse IgG1 (4A11) (MALS verified)

Catalog # POB-MY2485



BIOSYSTEMS
Acro

Source

Monoclonal Anti-Human Polatuzumab Antibody, Mouse IgG1 (4A11) is a Mouse monoclonal antibody recombinantly expressed from HEK293 cells.

Clone

4A11

Species

Mouse

Isotype

Mouse IgG1 | Mouse Kappa

Conjugate

Unconjugated

Antibody Type

Recombinant Monoclonal

Reactivity

Human

Immunogen

Recombinant Human Polatuzumab is expressed from human 293 cells

Specificity

Specifically recognizes Human Polatuzumab; This antibody is a neutralizing antibody.

Purity

95% as determined by SDS-PAGE.

90% as determined by SEC-MALS.

Purification

Protein A purified / Protein G purified

Formulation

Lyophilized from a 0.22 µm-filtered solution in PBS (pH 7.4), with trehalose as protectant.

Please contact us for customized product forms or formulations.

Reconstitution

Please refer to the Certificate of Analysis (CoA) for specific instructions.

For best performance, we strongly recommend following the reconstitution protocol provided in the CoA.

Storage

For long term storage, the product should be stored in a lyophilized state at -20°C or lower.

Please avoid repeated freeze-thaw cycles.

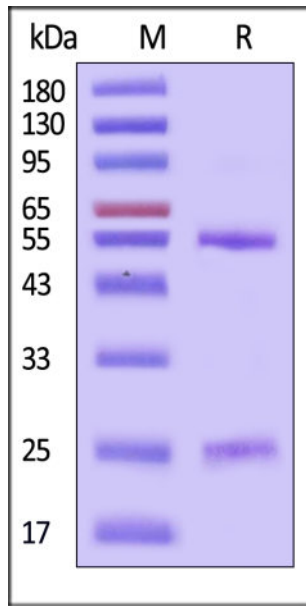
This product is stable after storage at:

- -20°C to -70°C for 12 months in lyophilized state;
- -70°C for 3 months under sterile conditions after reconstitution.

ACRO Quality Management System

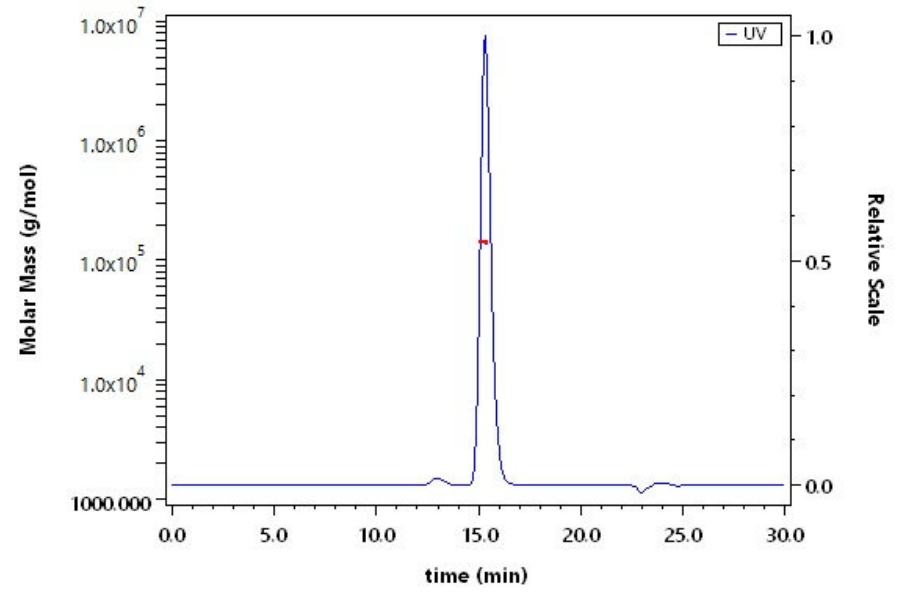
- [QMS\(ISO, GMP\)](#)
- [Quality Advantages](#)
- [Quality Control Process](#)

SDS-PAGE



Monoclonal Anti-Human Polatuzumab Antibody, Mouse IgG1 (4A11) on SDS-PAGE under reducing (R) condition. The gel was stained with Coomassie Blue. The purity of the protein is greater than 95% (With [Star Ribbon Pre-stained Protein Marker](#)).

SEC-MALS

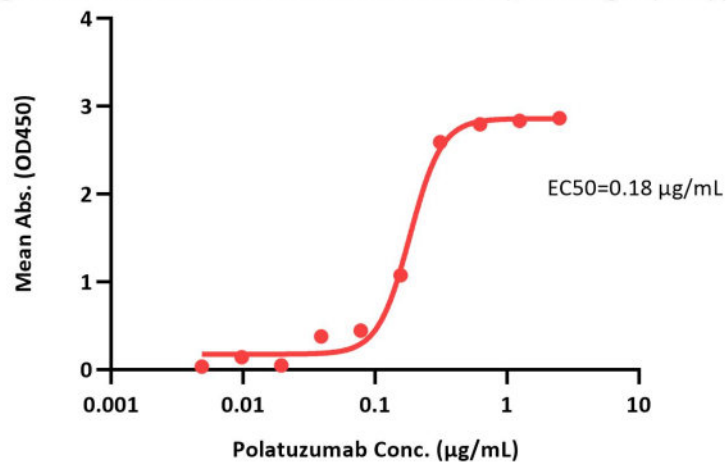


The purity of Monoclonal Anti-Human Polatuzumab Antibody, Mouse IgG1 (4A11) (Cat. No. POB-MY2485) is more than 90% and the molecular weight of this protein is around 130-160 kDa verified by SEC-MALS.

Bioactivity-ELISA

Monoclonal Anti-Human Polatuzumab Antibody, Mouse IgG1 (4A11) Sandwich ELISA

0.5 µg of Monoclonal Anti-Human Polatuzumab Antibody, Mouse IgG1 (4A11) per well



Immobilized Monoclonal Anti-Human Polatuzumab Antibody, Mouse IgG1 (4A11) (Cat. No. POB-MY2485) at 5 µg/mL, add Polatuzumab and then add Biotinylated Monoclonal Anti-Human Polatuzumab Antibody, Mouse IgG1 (2H7) (Cat. No. POB-BLMY2484) at 1 µg/mL. Detection was performed using HRP-conjugated Streptavidin (Acro, Cat. No. STN-NH913) (QC tested).

Background

Polatuzumab is a genetically engineered humanized monoclonal antibody directed against the CD79b antigen (B-cell receptor complex-associated protein beta chain) found on the surface of normal and malignant B lymphocytes. The antibody is an IgG1 kappa immunoglobulin containing murine complementarity-determining region (CDR) sequences grafted into human framework regions of the variable domains and human constant region sequences. Polatuzumab is composed of two heavy chains of 452 amino acids and two light chains of 214 amino acids.

Discounts, Gifts,
and more!



www.acrobiosystems.com

