



**Synonym**

Podoplanin,PDPN,Gp36

**Source**

Human Podoplanin, Fc Tag(PON-H5254) is expressed from human 293 cells (HEK293). It contains AA Ala 23 - Leu 131 (Accession # [Q86YL7-1](#)).

Predicted N-terminus: Ala 23

**Molecular Characterization**

Podoplanin(Ala 23 - Leu 131) Q86YL7-1	Fc(Pro 100 - Lys 330) P01857
--	---------------------------------

This protein carries a human IgG1 Fc tag at the C-terminus.

The protein has a calculated MW of 37.6 kDa. The protein migrates as 60-70 kDa under reducing (R) condition (SDS-PAGE) due to glycosylation.

**Endotoxin**

Less than 0.1 EU per µg by the LAL method / rFC method.

**Purity**

>90% as determined by SDS-PAGE.

>95% as determined by SEC-MALS.

**Formulation**

Lyophilized from 0.22 µm filtered solution in PBS, pH7.4 with trehalose as protectant.

Contact us for customized product form or formulation.

**Reconstitution**

Please see Certificate of Analysis for specific instructions.

*For best performance, we strongly recommend you to follow the reconstitution protocol provided in the CoA.*

**Storage**

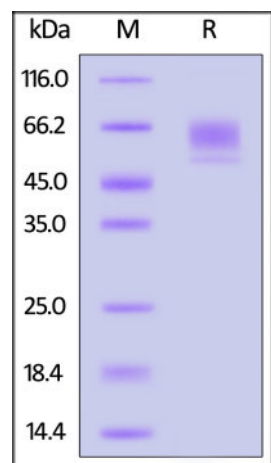
For long term storage, the product should be stored at lyophilized state at -20°C or lower.

*Please avoid repeated freeze-thaw cycles.*

This product is stable after storage at:

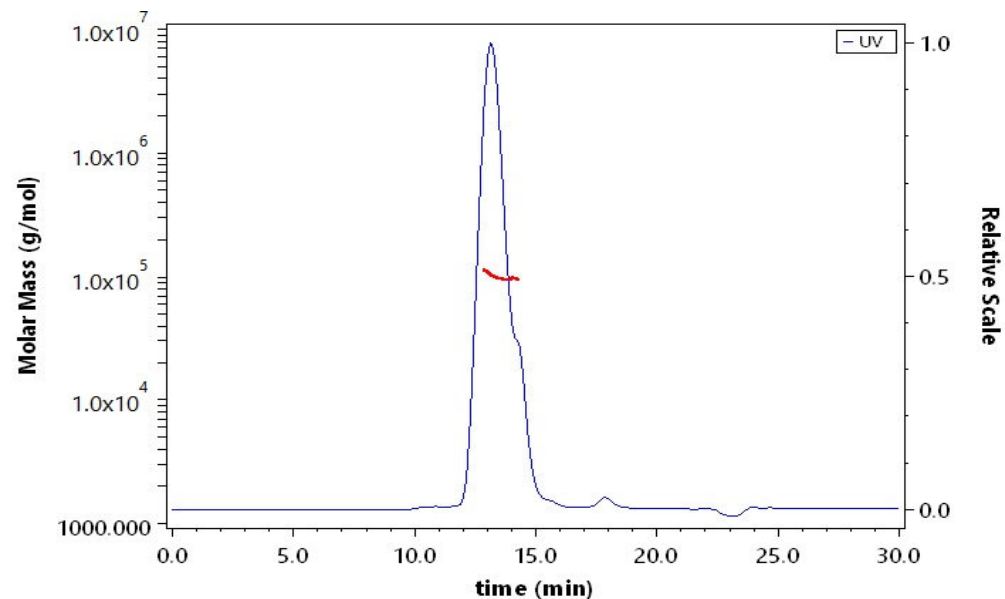
- -20°C to -70°C for 12 months in lyophilized state;
- -70°C for 3 months under sterile conditions after reconstitution.

**SDS-PAGE**



Human Podoplanin, Fc Tag on SDS-PAGE under reducing (R) condition. The gel was stained with Coomassie Blue. The purity of the protein is greater than 90%.

**SEC-MALS**



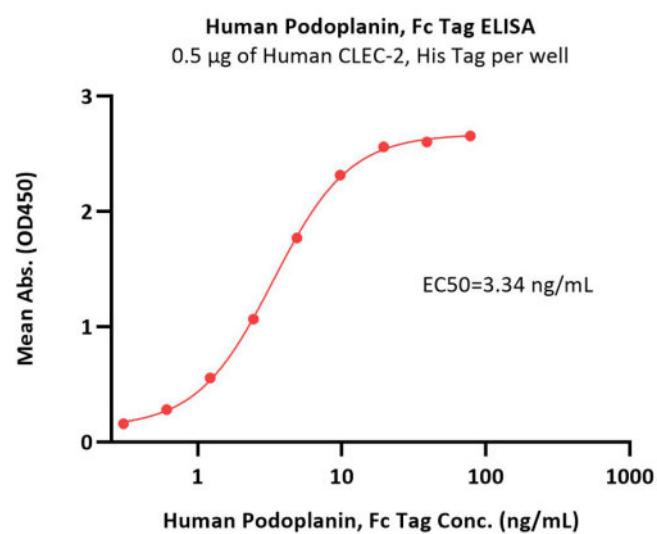
The purity of Human Podoplanin, Fc Tag (Cat. No. PON-H5254) is more than 95% and the molecular weight of this protein is around 90-110 kDa verified by SEC-MALS.

[Report](#)

**Bioactivity-ELISA**

Discounts, Gifts,  
and more!





Immobilized Human CLEC-2, His Tag (Cat. No. CL2-H5247) at 5 µg/mL (100 µL/well) can bind Human Podoplanin, Fc Tag (Cat. No. PON-H5254) with a linear range of 0.3-20 ng/mL (QC tested).

## Background

Podoplanin (PDPN) is a type I transmembrane mucin-like glycoprotein expressed in the lymphatic endothelium. It is overexpressed in several solid tumors, such as squamous cell carcinoma, malignant mesothelioma, Kaposi sarcoma, angiosarcoma, testicular seminoma, and brain tumors. PDPN expression is associated with malignant progression, epithelial–mesenchymal transition, and metastasis.

Discounts, Gifts,  
and more!

