



## Synonym

PSGL1,CD162,SELPLG,Selectin P ligand

## Source

Human PSGL-1, His Tag(PS1-H52H9) is expressed from human 293 cells (HEK293). It contains AA Gln 42 - Cys 320 (Accession # [Q14242-1](#)).

Predicted N-terminus: Gln 42

## Molecular Characterization

PSGL-1(Gln 42 - Cys 320)  
Q14242-1

Poly-his

This protein carries a polyhistidine tag at the C-terminus.

The protein has a calculated MW of 30.7 kDa. The protein migrates as 55-90 kDa under reducing (R) condition (SDS-PAGE) due to glycosylation.

## Endotoxin

Less than 1.0 EU per µg by the LAL method / rFC method.

## Purity

>90% as determined by SDS-PAGE.

## Formulation

Lyophilized from 0.22 µm filtered solution in PBS, pH7.4 with trehalose as protectant.

Contact us for customized product form or formulation.

## Reconstitution

Please see Certificate of Analysis for specific instructions.

*For best performance, we strongly recommend you to follow the reconstitution protocol provided in the CoA.*

## Storage

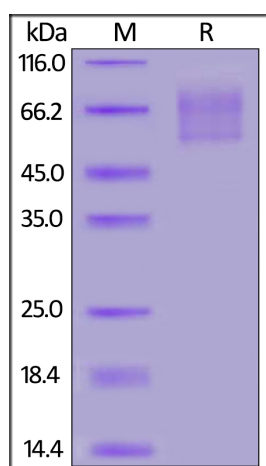
For long term storage, the product should be stored at lyophilized state at -20°C or lower.

*Please avoid repeated freeze-thaw cycles.*

This product is stable after storage at:

- -20°C to -70°C for 12 months in lyophilized state;
- -70°C for 3 months under sterile conditions after reconstitution.

## SDS-PAGE

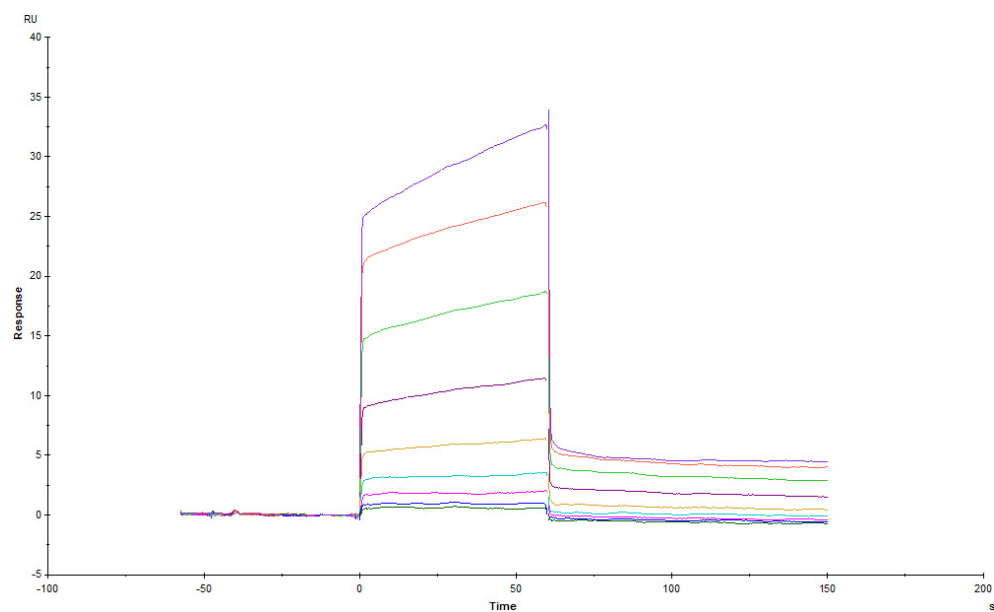


Human PSGL-1, His Tag on SDS-PAGE under reducing (R) condition. The gel was stained with Coomassie Blue. The purity of the protein is greater than 90%.

## Bioactivity-SPR

Discounts, Gifts,  
and more!





Human PSGL-1, His Tag (Cat. No. PS1-H52H9) immobilized on CM5 Chip can bind Human B7-H5, Fc Tag (Cat. No. B75-H5259) with an affinity constant of 0.213  $\mu$ M as determined in a SPR assay (Biacore T200) (Routinely tested).

## Background

P-selectin glycoprotein ligand 1 (PSGL-1) is also known as Selectin P ligand (SELPLG), CD antigen CD162. PSGL-1 is disulfide-linked homodimer which is the high affinity counter-receptor for P-selectin on expressed on activated endothelial cells and platelets. PSGL-1 / SELPLG interacts with P-, E- and L-selectins, through their lectin/EGF domains, is required for promoting recruitment and rolling of leukocytes. These interactions require sialyl Lewis X glycan modification but there is a differing dependence for tyrosine sulfations. Dimerization appears not to be required for P-selectin/SELP binding. PSGL-1 can interact with SNX20, MSN and SYK. PSGL-1 / SELPLG mediate the activation of SYK by SELPLG.

Discounts, Gifts,  
and more!

