

# Monoclonal Anti-Human Phospho-Tau (Thr181) Antibody, Mouse IgG2a (8D8C10)

Catalog # PT1-Y2073



## Source

Monoclonal Anti-Human Phospho-Tau (Thr181) Antibody, Mouse IgG2a (8D8C10) is a Mouse monoclonal antibody produced from a hybridoma created by fusing SP2/0 myeloma and Mouse B-lymphocytes.

## Clone

8D8C10

## Species

Mouse

## Isotype

Mouse IgG2a | Mouse Kappa

## Conjugate

Unconjugated

## Antibody Type

Hybridoma Monoclonal

## Reactivity

Human

## Immunogen

Recombinant polypeptide protein

## Specificity

Specifically recognizes Human p-tau181 Protein.

## Application

Application	Recommended Usage
IF	1:50-1:500

## Purity

95% as determined by SDS-PAGE.

## Purification

Protein A purified / Protein G purified

## Formulation

Lyophilized from a 0.22 µm-filtered solution in PBS (pH 7.4), with trehalose as protectant.

Please contact us for customized product forms or formulations.

## Reconstitution

Please refer to the Certificate of Analysis (CoA) for specific instructions.

**For best performance, we strongly recommend following the reconstitution protocol provided in the CoA.**

## Storage

For long term storage, the product should be stored in a lyophilized state at -20°C or lower.

**Please avoid repeated freeze-thaw cycles.**

This product is stable after storage at:

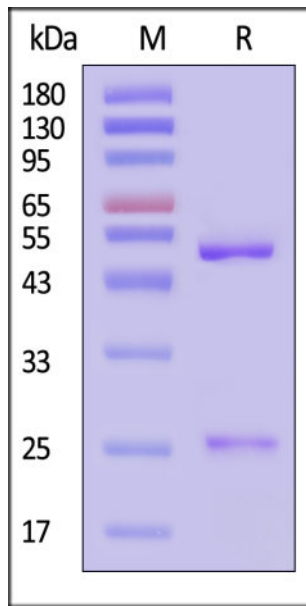
- -20°C to -70°C for 12 months in lyophilized state;
- -70°C for 3 months under sterile conditions after reconstitution.

## ACRO Quality Management System

- [QMS\(ISO, GMP\)](#)
- [Quality Advantages](#)

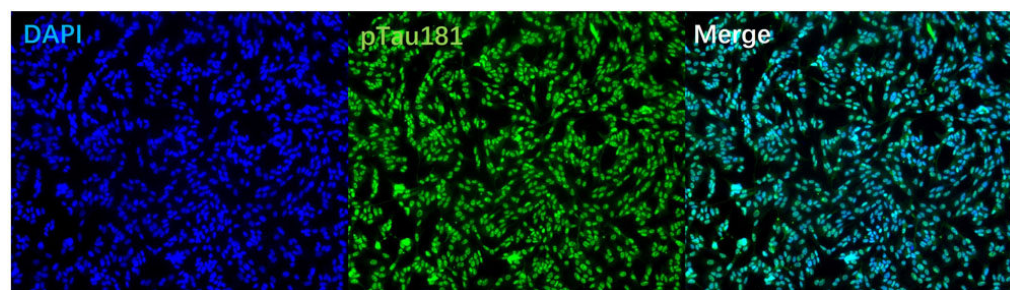
- Quality Control Process

## SDS-PAGE



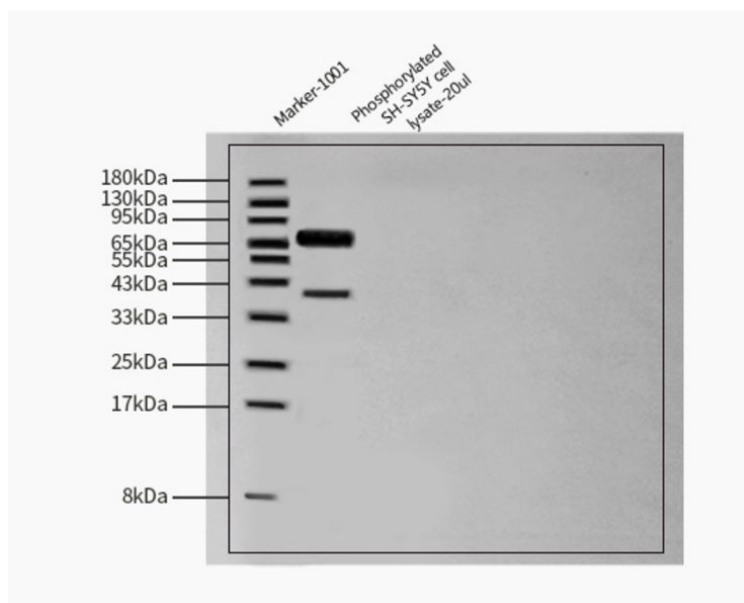
Monoclonal Anti-Human Phospho-Tau (Thr181) Antibody, Mouse IgG2a (8D8C10) on SDS-PAGE under reducing (R) condition. The gel was stained with Coomassie Blue. The purity of the protein is greater than 95% (With [Star Ribbon Pre-stained Protein Marker](#)).

## Immunofluorescence



**2D cell staining:** Immunofluorescent staining (10X) of phosphorylated tau in treated SH-SY5Y neuroblastoma cells with purified PT1-Y2073 at 1:200 dilution. DAPI (blue) was used as nuclear counterstain.

## Western Blot



Detection of Monoclonal Anti-Human p-tau181 antibody, Mouse, Mouse IgG2a (8D8C10), Mouse IgG2a | Kappa, HEK by Western Blot. Monoclonal Anti-Human p-tau181 antibody, Mouse, Mouse IgG2a (8D8C10), Mouse IgG2a | Kappa, HEK at 10.0 ug/ml dilution + Phosphorylated SH-SY5Y cell lysate, Mouse Tag at 20uL.

Secondary: (MFC)-Peroxidase AffiniPure Goat Anti-Mouse IgG, Fcγ Fragment Specific (1:1500).

Predicted band size: 65 kDa 12% Bis-Tris Protein Gel.

The recommended dilution ratio is 10.0 ug/ml.

## Background

Tau, the microtubule-associated protein, forms insoluble filaments that accumulate as neurofibrillary tangles in Alzheimer's disease (AD) and related tauopathies. Under physiological conditions, tau regulates the assembly and maintenance of the structural stability of microtubules. In the diseased brain, however, tau becomes abnormally hyperphosphorylated, which ultimately causes the microtubules to disassemble, and the free tau molecules aggregate into paired helical filaments.

Discounts, Gifts,  
and more!



[www.acrobiosystems.com](http://www.acrobiosystems.com)