



## Synonym

PTH1R, PTHR, PTHR1

## Source

Human PTH1R, His Tag (PTR-H5222) is expressed from human 293 cells (HEK293). It contains AA Asp 27 - Gly 188 (Accession # [Q03431-1](#)).

Predicted N-terminus: Asp 27

## Molecular Characterization

PTH1R(Asp 27 - Gly 188)  
Q03431-1 Poly-his

This protein carries a polyhistidine tag at the C-terminus.

The protein has a calculated MW of 19.6 kDa. The protein migrates as 27-43 kDa when calibrated against [Star Ribbon Pre-stained Protein Marker](#) under reducing (R) condition (SDS-PAGE) due to different glycosylation.

## Endotoxin

Less than 1.0 EU per µg by the LAL method / rFC method.

## Purity

>85% as determined by SDS-PAGE.

## Formulation

Lyophilized from 0.22 µm filtered solution in PBS, pH7.4 with trehalose as protectant.

Contact us for customized product form or formulation.

## Reconstitution

Please see Certificate of Analysis for specific instructions.

*For best performance, we strongly recommend you to follow the reconstitution protocol provided in the CoA.*

## Storage

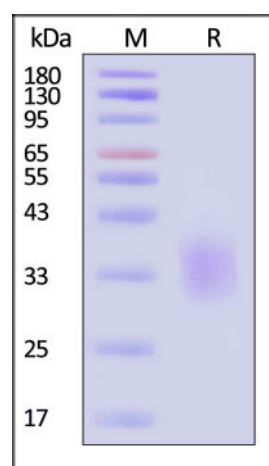
For long term storage, the product should be stored at lyophilized state at -20°C or lower.

*Please avoid repeated freeze-thaw cycles.*

This product is stable after storage at:

- -20°C to -70°C for 12 months in lyophilized state;
- -70°C for 3 months under sterile conditions after reconstitution.

## SDS-PAGE

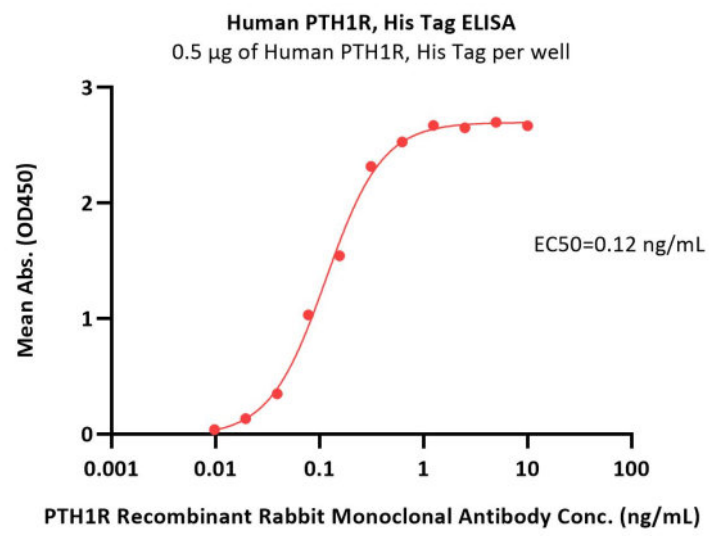


Human PTH1R, His Tag on SDS-PAGE under reducing (R) condition. The gel was stained with Coomassie Blue. The purity of the protein is greater than 85% (With [Star Ribbon Pre-stained Protein Marker](#)).

## Bioactivity-ELISA

Discounts, Gifts,  
and more!





Immobilized Human PTH1R, His Tag (Cat. No. PTR-H5222) at 5 µg/mL (100 µL/well) can bind PTH1R Recombinant Rabbit Monoclonal Antibody with a linear range of 0.01-0.313 ng/mL (QC tested).

## Background

Parathyroid hormone/parathyroid hormone-related peptide receptor is also known as Parathyroid hormone 1 receptor (PTH1R), PTHR1, PTH/PTHrP type I receptor (PTH/PTHr receptor), which belongs to the G-protein coupled receptor 2 family. PTH1R / PTHR1 is a receptor for parathyroid hormone and for parathyroid hormone-related peptide. The activity of this receptor is mediated by G proteins which activate adenylyl cyclase and also a phosphatidylinositol-calcium second messenger system.

Discounts, Gifts,  
and more!

