

Monoclonal Anti-PTX Antibody, Rabbit IgG1 (M1F06)

Catalog # PTX-MY2606



BIOSYSTEMS
Acro

Specificity

Specifically recognizes PTX.

Source

Monoclonal Anti-PTX Antibody, Rabbit IgG1 (M1F06) is a Rabbit monoclonal antibody recombinantly expressed from HEK293 cells.

Clone

M1F06

Isotype

Rabbit IgG | Rabbit Kappa

Conjugate

Unconjugated

Immunogen

PTX-BSA

Purification

Protein A purified / Protein G purified

Formulation

Lyophilized from a 0.22 μm -filtered solution in PBS (pH 7.4), with trehalose as protectant.

Please contact us for customized product forms or formulations.

Reconstitution

Please refer to the Certificate of Analysis (CoA) for specific instructions.

For best performance, we strongly recommend following the reconstitution protocol provided in the CoA.

Storage

For long term storage, the product should be stored in a lyophilized state at -20°C or lower.

Please avoid repeated freeze-thaw cycles.

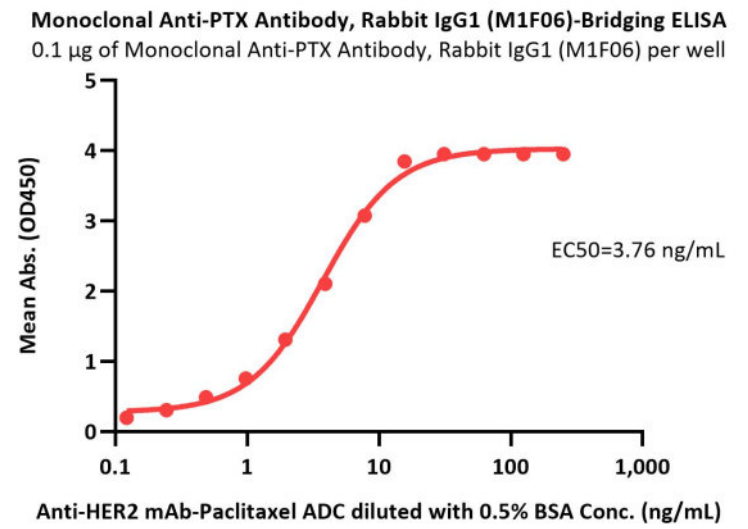
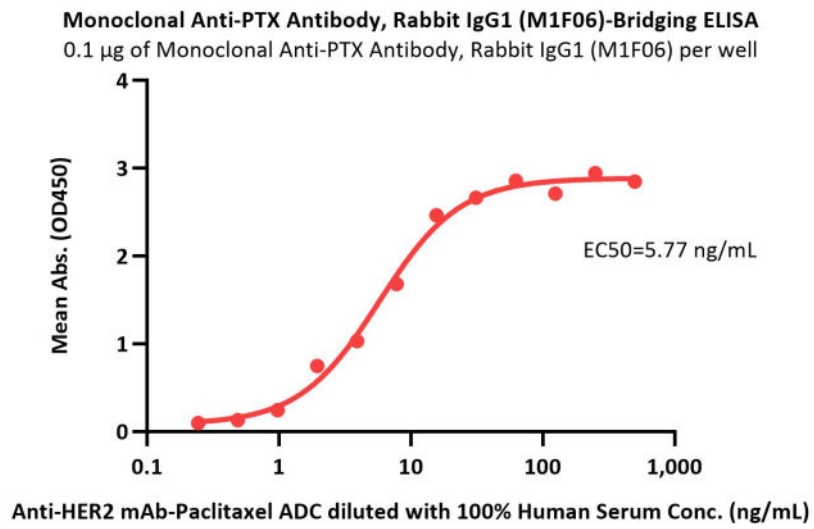
This product is stable after storage at:

- -20°C to -70°C for 12 months in lyophilized state;
- -70°C for 3 months under sterile conditions after reconstitution.

ACRO Quality Management System

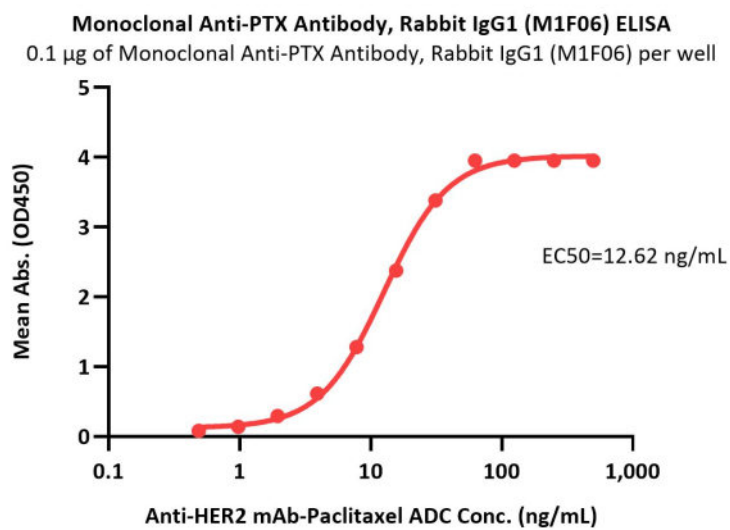
- [QMS\(ISO, GMP\)](#)
- [Quality Advantages](#)
- [Quality Control Process](#)

Bioactivity-ELISA



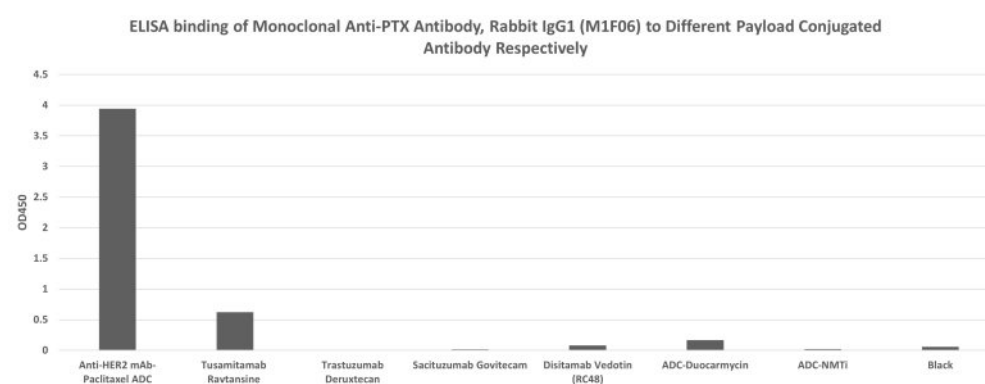
Immobilized Monoclonal Anti-PTX Antibody, Rabbit IgG1 (M1F06) (Cat. No. PTX-MY2606) at 1 µg/mL, add Anti-HER2 mAb-Paclitaxel ADC in the 100% Human Serum and then add Biotinylated Human Her2, His,Avitag, premium grade (Cat. No. HE2-H82E2) at 0.5 µg/mL. Detection was performed using HRP-conjugated Streptavidin (Acro, Cat. No. STN-NH913) (QC tested).

Immobilized Monoclonal Anti-PTX Antibody, Rabbit IgG1 (M1F06) (Cat. No. PTX-MY2606) at 1 µg/mL, add Anti-HER2 mAb-Paclitaxel ADC in the 0.5% BSA and then add Biotinylated Human Her2, His,Avitag, premium grade (Cat. No. HE2-H82E2) at 0.5 µg/mL. Detection was performed using HRP-conjugated Streptavidin (Acro, Cat. No. STN-NH913) (Routinely tested).



Immobilized Monoclonal Anti-PTX Antibody, Rabbit IgG1 (M1F06) (Cat. No. PTX-MY2606) at 1 µg/mL (100 µL/well) can bind Anti-HER2 mAb-Paclitaxel ADC with a linear range of 0.5-31 ng/mL (Routinely tested).

Cross Verification



ELISA binding of Monoclonal Anti-PTX Antibody, Rabbit IgG1 (M1F06) (Cat. No. PTX-MY2606) with Anti-HER2 mAb-Paclitaxel ADC, Tusamitamab Ravtansine, Trastuzumab Deruxtecan, Sacituzumab Govitecam, Disitamab Vedotin (RC48), ADC-Duocarmycin, and ADC-NMTi conjugated antibody respectively.

The coating antibody was Monoclonal Anti-PTX Antibody, Rabbit IgG1 (M1F06) (Cat. No. PTX-MY2606), used at 1 µg/mL concentration. The primary antibody were different payload conjugated antibodies, including Anti-HER2 mAb-Paclitaxel ADC, Tusamitamab Ravtansine, Trastuzumab Deruxtecan, Sacituzumab Govitecam, Disitamab Vedotin (RC48), ADC-Duocarmycin, and ADC-NMTi conjugated antibodies used at 0.5 µg/mL concentration. The secondary antibody was HRP conjugated Anti-Human-IgG-Fc Antibody (6F11C8), mAb (Acro, Cat. No. IGG-LY69) used at 1:10000 concentration.

Monoclonal Anti-PTX Antibody, Rabbit IgG1 (M1F06) (Cat. No. PTX-MY2606) is specific to Anti-HER2 mAb-Paclitaxel ADC and has no cross-reactivity with Tusamitamab Ravtansine, Trastuzumab Deruxtecan, Sacituzumab Govitecam, Disitamab Vedotin (RC48), ADC-Duocarmycin and ADC-NMTi (Routinely tested).

Background

Paclitaxel (PTX) is a natural diterpenoid anticancer compound extracted from *Taxus brevifolia*. It stabilizes microtubule structure, inhibits tubulin depolymerization and arrests cell mitosis, thus exerting broad-spectrum antitumor activity and being widely used in clinical chemotherapy.

Discounts, Gifts,
and more!



www.acrobiosystems.com



5/25/2026