

Human ROR1 (30-305) Protein, His Tag (MALS verified)

Catalog # RO1-H52H3



BIOSYSTEMS
Acro

Surprise Inside!

Synonym

ROR1, NTRKR1

Source

Human ROR1 (30-305) Protein, His Tag (RO1-H52H3) is expressed from human 293 cells (HEK293). It contains AA Gln 30 - Asp 305 (Accession # [Q01973-1](#)).

Predicted N-terminus: Gln 30

Molecular Characterization

ROR1(Gln 30 - Asp 305)
Q01973-1

Poly-his

This protein carries a polyhistidine tag at the C-terminus.

The protein has a calculated MW of 32.7 kDa. The protein migrates as 42-50 kDa when calibrated against [Star Ribbon Pre-stained Protein Marker](#) under reducing (R) condition (SDS-PAGE) due to glycosylation.

Endotoxin

Less than 1.0 EU per µg by the LAL method / rFC method.

Purity

>90% as determined by SDS-PAGE.

>90% as determined by SEC-MALS.

Formulation

Lyophilized from 0.22 µm filtered solution in PBS, pH7.4 with trehalose as protectant.

Contact us for customized product form or formulation.

Reconstitution

Please see Certificate of Analysis for specific instructions.

For best performance, we strongly recommend you to follow the reconstitution protocol provided in the CoA.

Storage

For long term storage, the product should be stored at lyophilized state at -20°C or lower.

Please avoid repeated freeze-thaw cycles.

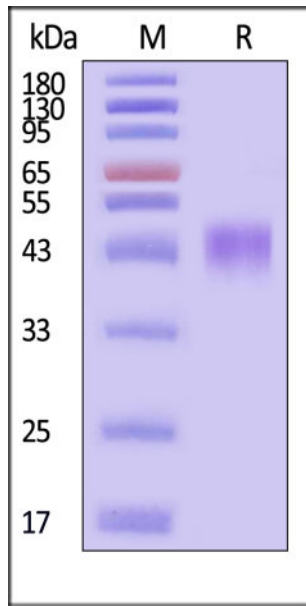
This product is stable after storage at:

- -20°C to -70°C for 12 months in lyophilized state;
- -70°C for 3 months under sterile conditions after reconstitution.

ACRO Quality Management System

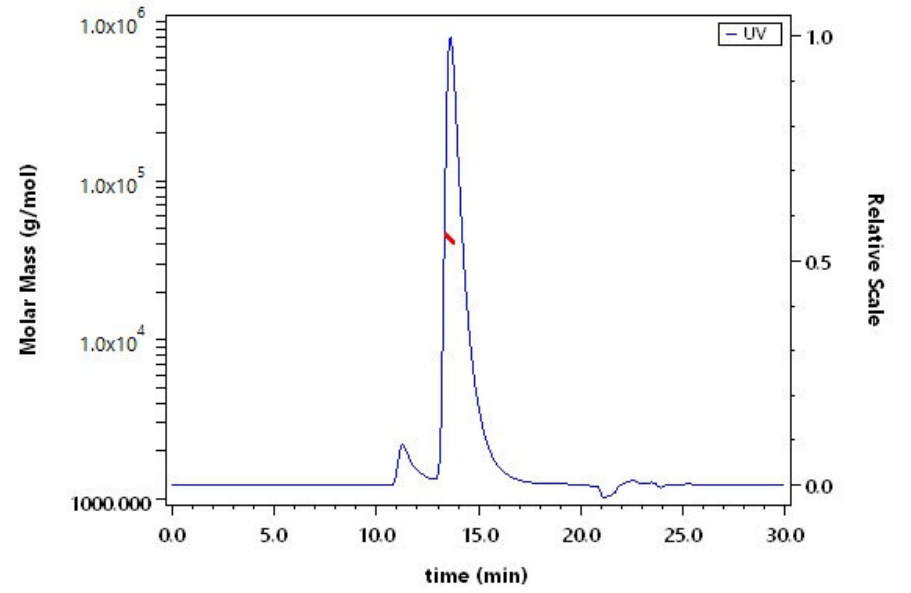
- [QMS\(ISO, GMP\)](#)
- [Quality Advantages](#)
- [Quality Control Process](#)

SDS-PAGE



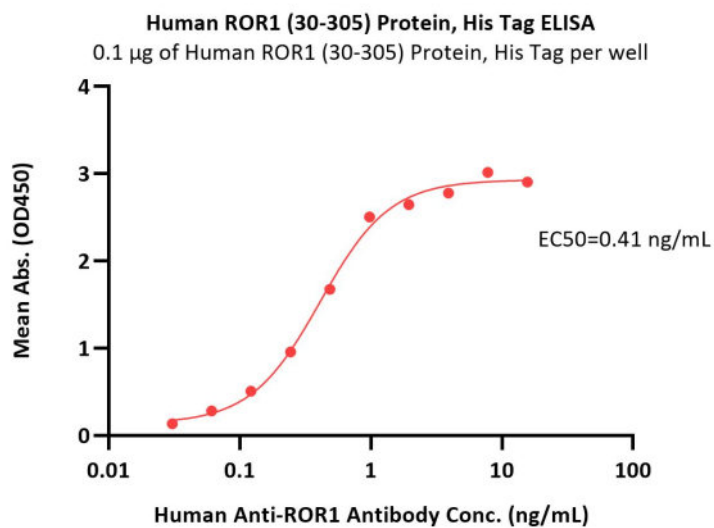
Human ROR1 (30-305) Protein, His Tag on SDS-PAGE under reducing (R) condition. The gel was stained with Coomassie Blue. The purity of the protein is greater than 90% (With [Star Ribbon Pre-stained Protein Marker](#)).

SEC-MALS



The purity of Human ROR1 (30-305) Protein, His Tag (Cat. No. RO1-H52H3) is more than 90% and the molecular weight of this protein is around 35-50 kDa verified by SEC-MALS.

Bioactivity-ELISA



Immobilized Human ROR1 (30-305) Protein, His Tag (Cat. No. RO1-H52H3) at 1 $\mu\text{g/mL}$ (100 $\mu\text{L/well}$) can bind Human Anti-ROR1 Antibody with a linear range of 0.03-1 ng/mL (QC tested).

Background

Tyrosine-protein kinase transmembrane receptor ROR1 is also known as Neurotrophic tyrosine kinase, receptor-related 1 (NTRKR1), which belongs to the protein kinase superfamily or tyr protein kinase family or ROR subfamily. ROR1 contains 1 FZ (frizzled) domain, 1 Ig-like C2-type (immunoglobulin-like) domain, 1 kringle domain, 1 protein kinase domain. ROR1 is expressed at high levels during early embryonic development. The expression levels drop strongly around day 16 and there are only very low levels in adult tissues. Isoform Short is strongly expressed in fetal and adult CNS and in a variety of human cancers, including those originating from CNS or PNS neuroectoderm. ROR1 could interact with casein kinase 1 epsilon (CK1 ϵ) to activate phosphoinositide 3-kinase-mediated AKT phosphorylation and cAMP-response-element-binding protein (CREB), which was associated with enhanced tumor-cell growth.

Discounts, Gifts,
and more!



www.acrobiosystems.com

