

# Monoclonal Anti-HRSV Glycoprotein (RSV-G) Antibody, Human IgG1 (8E6) (MALS verified)

Catalog # RSV-MY2231



BIOSYSTEMS  
**Acro**

## Source

Monoclonal Anti-HRSV Glycoprotein (RSV-G) Antibody, Human IgG1 (8E6) is a chimeric monoclonal antibody recombinantly expressed from HEK293, which combines the variable region of a mouse monoclonal antibody with Human constant domain.

## Clone

8E6

## Species

Mouse

## Isotype

Human IgG1 | Human Kappa

## Conjugate

Unconjugated

## Antibody Type

Recombinant Monoclonal

## Reactivity

Virus

## Immunogen

Recombinant HRSV (A) Glycoprotein G Protein is expressed from human 293 cells

## Specificity

Specific recognition of HRSV (A) Glycoprotein G Protein.

## Application

Application	Recommended Usage
ELISA	0.06-125 ng/mL

## Purity

95% as determined by SDS-PAGE.

90% as determined by SEC-MALS.

## Purification

Protein A purified / Protein G purified

## Formulation

Lyophilized from a 0.22  $\mu$ m-filtered solution in PBS (pH 7.4), with trehalose as protectant.

Please contact us for customized product forms or formulations.

## Reconstitution

Please refer to the Certificate of Analysis (CoA) for specific instructions.

**For best performance, we strongly recommend following the reconstitution protocol provided in the CoA.**

## Storage

For long term storage, the product should be stored in a lyophilized state at -20°C or lower.

**Please avoid repeated freeze-thaw cycles.**

This product is stable after storage at:

- -20°C to -70°C for 12 months in lyophilized state;
- -70°C for 3 months under sterile conditions after reconstitution.

## Cross Verification

This product No cross-reactivity in ELISA with

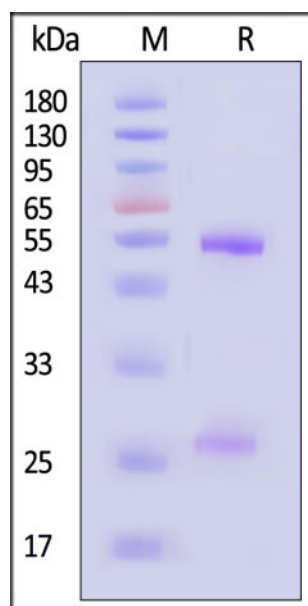
HRSV (A) Glycoprotein G Protein, His Tag (Cat. No. GLG-V5143).

HRSV (B) Glycoprotein G Protein, His Tag (Cat. No. GLG-V5144).

## ACRO Quality Management System

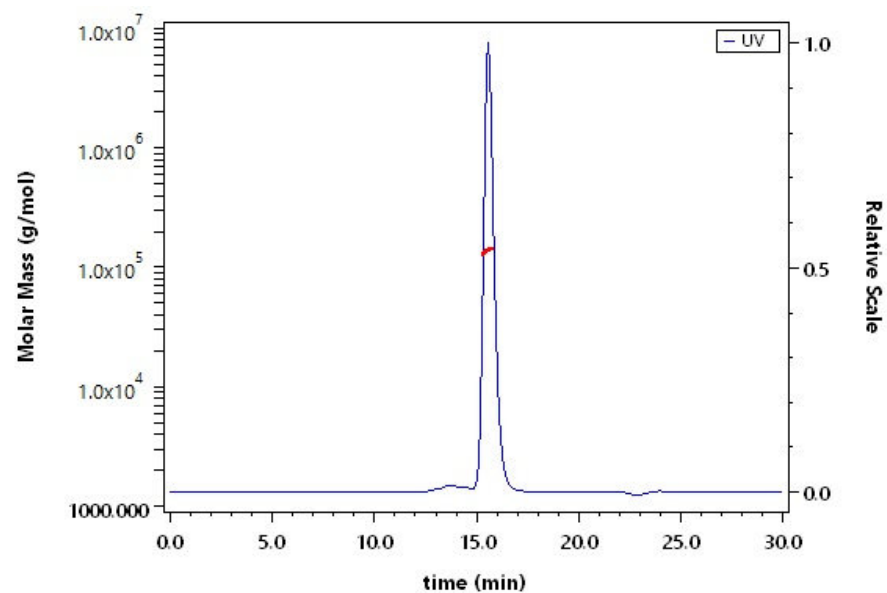
- [QMS\(ISO, GMP\)](#)
- [Quality Advantages](#)
- [Quality Control Process](#)

## SDS-PAGE



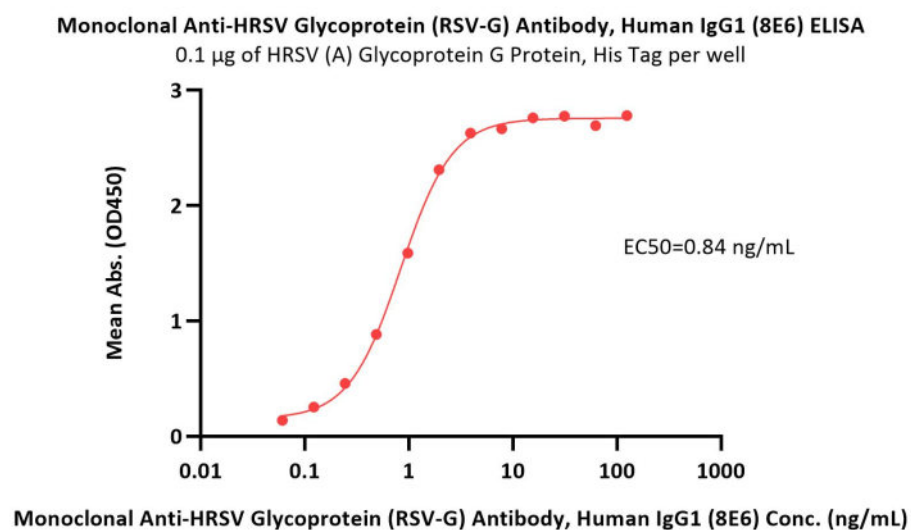
Monoclonal Anti-HRSV Glycoprotein (RSV-G) Antibody, Human IgG1 (8E6) on SDS-PAGE under reducing (R) condition. The gel was stained with Coomassie Blue. The purity of the protein is greater than 95% (With [Star Ribbon Pre-stained Protein Marker](#)).

## SEC-MALS



The purity of Monoclonal Anti-HRSV Glycoprotein (RSV-G) Antibody, Human IgG1 (8E6) (Cat. No. RSV-MY2231) is more than 90% and the molecular weight of this protein is around 135-165 kDa verified by SEC-MALS.

## Bioactivity-ELISA



Immobilized HRSV (A) Glycoprotein G Protein, His Tag (Cat. No. RSG-V5221) at 1 µg/mL (100 µL/well) can bind Monoclonal Anti-HRSV Glycoprotein (RSV-G) Antibody, Human IgG1 (8E6) (Cat. No. RSV-MY2231) with a linear range of 0.06-2 ng/mL (QC tested).

## Background

The two major glycoproteins on the surface of the RSV virion, the attachment glycoprotein (G) and the fusion (F) glycoprotein, control the initial phases of infection. The central region of the G protein contains a 13-amino acid highly conserved domain, partially overlapping the cysteine noose domain with 4 cysteines linked 1–4 and 2–3, followed by a highly basic heparin-binding domain (HBD). The HBD is the likely attachment site for heparan sulfate (HS) found on the surface of most cells. A peptide from the G protein HBD (amino acids 184–198) binds efficiently to HEp-2 cells and inhibits RSV infection.

Discounts, Gifts,  
and more!



[www.acrobiosystems.com](http://www.acrobiosystems.com)

