

# Human SEZ6 (20-952) Protein, Fc Tag (MALS verified)

Catalog # SE6-H5254



BIOSYSTEMS  
**Acro**

Surprise Inside!

## Synonym

BSRPC

## Source

Human SEZ6 (20-952) Protein, Fc Tag (SE6-H5254) is expressed from human 293 cells (HEK293). It contains AA Leu 20 - His 925 (Accession # [Q53EL9-1](#)).

Predicted N-terminus: Leu 20

## Molecular Characterization

SEZ6(Leu 20 - His 925) Q53EL9-1	Fc(Pro 100 - Lys 330) P01857-1
------------------------------------	-----------------------------------

This protein carries a human IgG1 Fc tag at the C-terminus.

The protein has a calculated MW of 124.2 kDa. The protein migrates as >180 kDa when calibrated against [Star Ribbon Pre-stained Protein Marker](#) under reducing (R) condition (SDS-PAGE) due to glycosylation.

## Endotoxin

Less than 1.0 EU per µg by the LAL method / rFC method.

## Purity

>90% as determined by SDS-PAGE.

>90% as determined by SEC-MALS.

## Formulation

Lyophilized from 0.22 µm filtered solution in PBS, 0.2 M Arginine, pH7.4 with trehalose as protectant.

Contact us for customized product form or formulation.

## Reconstitution

Please see Certificate of Analysis for specific instructions.

**For best performance, we strongly recommend you to follow the reconstitution protocol provided in the CoA.**

## Storage

For long term storage, the product should be stored at lyophilized state at -20°C or lower.

**Please avoid repeated freeze-thaw cycles.**

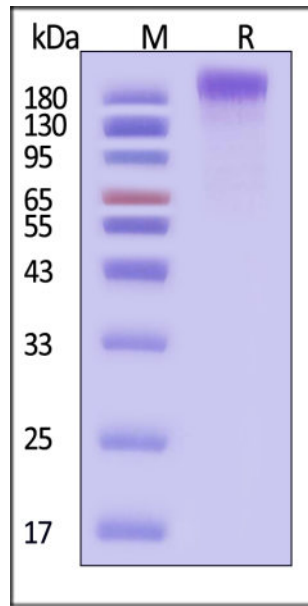
This product is stable after storage at:

- -20°C to -70°C for 12 months in lyophilized state;
- -70°C for 3 months under sterile conditions after reconstitution.

## ACRO Quality Management System

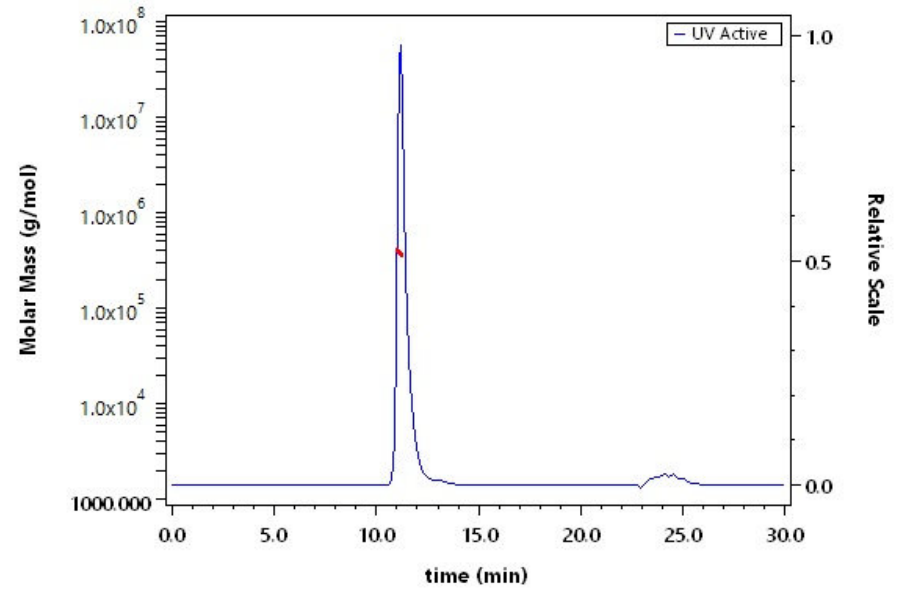
- [QMS\(ISO, GMP\)](#)
- [Quality Advantages](#)
- [Quality Control Process](#)

## SDS-PAGE



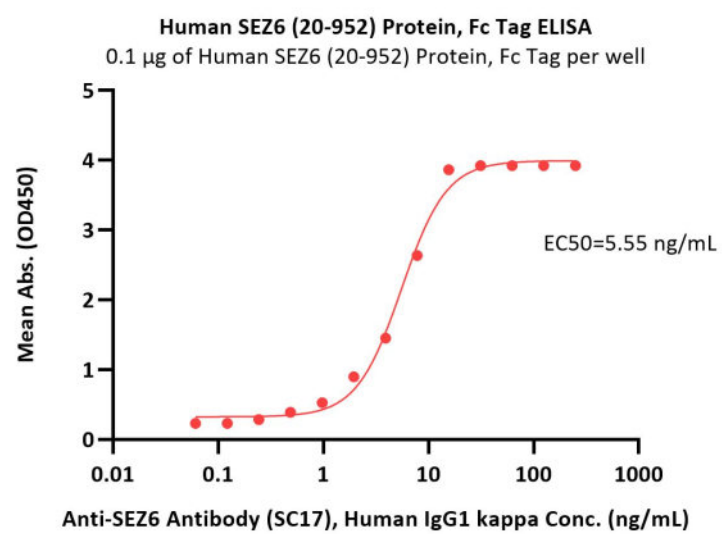
Human SEZ6 (20-952) Protein, Fc Tag on SDS-PAGE under reducing (R) condition. The gel was stained with Coomassie Blue. The purity of the protein is greater than 90% (With [Star Ribbon Pre-stained Protein Marker](#)).

## SEC-MALS



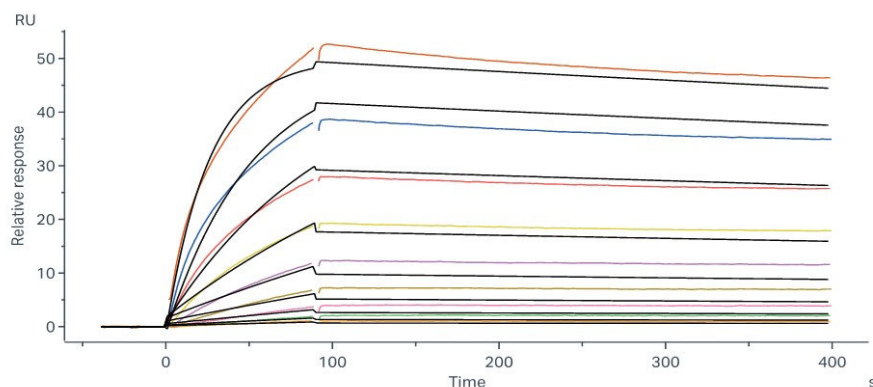
The purity of Human SEZ6 (20-952) Protein, Fc Tag (Cat. No. SE6-H5254) is more than 90% and the molecular weight of this protein is around 320-380 kDa verified by SEC-MALS.

## Bioactivity-ELISA



Immobilized Human SEZ6 (20-952) Protein, Fc Tag (Cat. No. SE6-H5254) at 1 µg/mL (100 µL/well) can bind Anti-SEZ6 Antibody (SC17), Human IgG1 kappa with a linear range of 0.06-16 ng/mL (QC tested).

## Bioactivity-SPR



Anti-SEZ6 Antibody (SC17), Human IgG1 kappa immobilized on CM5 Chip can bind Human SEZ6 (20-952) Protein, Fc Tag (Cat. No. SE6-H5254) with an affinity constant of 2.96 nM as determined in a SPR assay (Biacore 8K) (Routinely tested).

## Background

May play a role in cell-cell recognition and in neuronal membrane signaling. Seems to be important for the achievement of the necessary balance between dendrite elongation and branching during the elaboration of a complex dendritic arbor. Involved in the development of appropriate excitatory synaptic connectivity.

Discounts, Gifts,  
and more!



[www.acrobiosystems.com](http://www.acrobiosystems.com)

5/8/2026

---